

# PRODUCT SHEET

## DUCATI HYPERMOTARD 796

2010 >

LINE SPORT - SLIP ON SYSTEMS





**DUCATI HYPERMOTARD 796**  
2010 >  
SPORT - SLIP ON SYSTEMS

	Kit	Type	Shape	Level	Homologated
50.CR.009.0	CARBON SIDE PANELS	CARBON	--	--	<input checked="" type="checkbox"/>
D.026.L7	SLIP-ON	STAINLESS STEEL CARBON CAP	SUONO	STANDARD LEVEL	<input checked="" type="checkbox"/>
D.026.C1	TUBE NO KAT	--	--	--	<input checked="" type="checkbox"/>



© 2011 - www.mivv.it 



© 2011 - www.mivv.it 



 © 2009 www.mivv.it



© 2011 - www.mivv.it 



**MODEL** DUCATI HYPERMOTARD 796

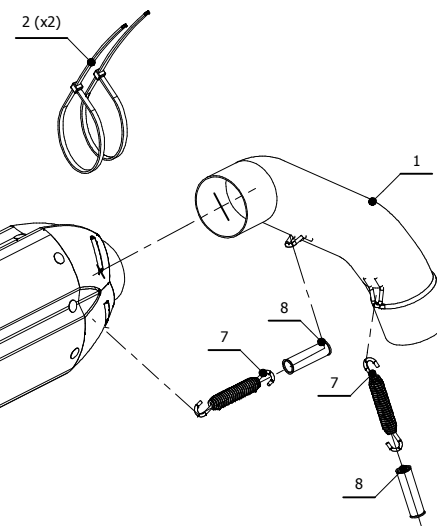
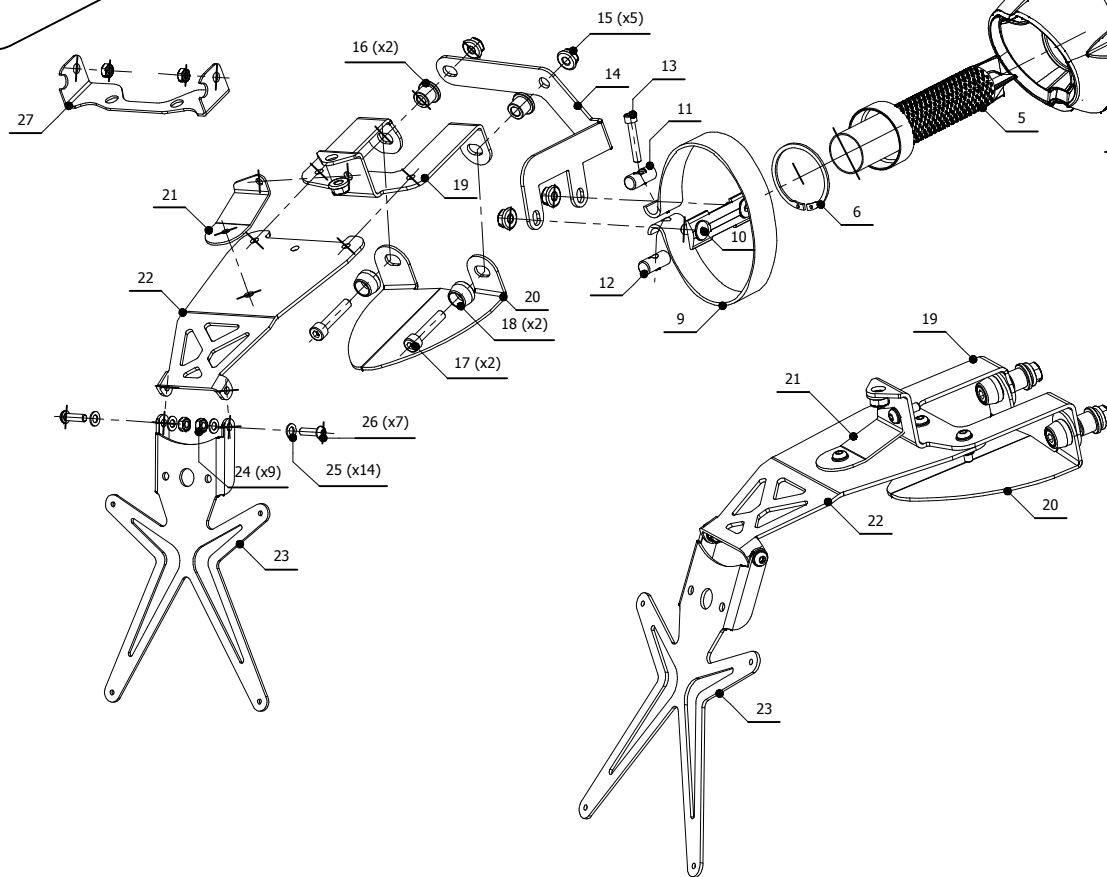
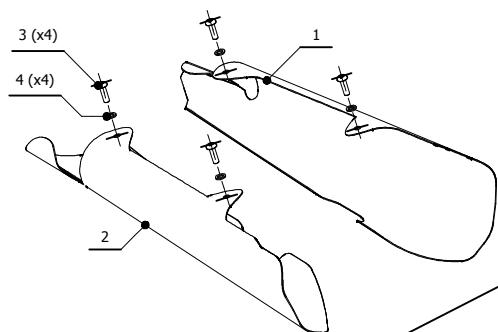
**YEAR** 2010-->

**LINE** SPORT

**MUFFLER** SUONO

**SCHEMATIC**

PARTI OPZIONALI / OPTIONAL PARTS			
#	QTÀ / QTY	DESCRIZIONE / DESCRIPTION	CODICE / CODE
1	1	Copertura sinistra in carbonio / Left carbon cover	50.CR.009.SX
2	1	Copertura destra in carbonio / Right carbon cover	50.CR.009.DX
3	4	Vite M5 x 16 / Screw M5 x 16	50.73.350.1
4	4	Rondella M5 / Washer M5	50.73.351.1



**ELENCO PARTI / PARTS LIST**

#	QTÀ / QTY	DESCRIZIONE / DESCRIPTION	CODICE / CODE
1	1	Tubo di raccordo / Link pipe	9773D02657
2	2	Fascetta in nylon / Nylon clamp	50.73.360.1
3	2	Tassello grande / Rubber big block	50.73.203.1
4	1	Silenziatore / Muffler	SUONO
5	1	Db Killer forato / Drilled DB killer	50.DK.025.0
6	1	Anello Seger / Seger ring	50.73.218.1
7	2	Molla media / Middle spring	50.73.359.1
8	2	Tubo in gomma per molla / Rubber pipe for spring	50.73.210.1
9	1	Staffa in carbonio / Carbon fiber bracket	50.SS.252.1
10	1	Staffa / Bracket	50.SS.253.0
11	1	Fermo forato / Drilled stop	50.73.214.1
12	1	Fermo filettato / Threaded stop	50.73.213.1
13	1	Vite M6x35 / Screw M6x35	50.73.228.1
14	1	Staffa / Bracket	50.SS.456.1
15	5	Dado 8 MA flangiato / Flanged nut 8 MA	50.73.052.1
16	2	Boccola in alluminio / Aluminium bush	50.73.397.1
17	2	Vite M8x40 / Screw M8x40	50.73.075.1
18	2	Rondella in alluminio / Aluminium washer	50.73.248.1
19	1	Staffa / Bracket	50.SS.457.A
20	1	Staffa / Bracket	50.SS.457.E
21	1	Staffa / Bracket	50.SS.457.C
22	1	Staffa / Bracket	50.SS.457.B
23	1	Staffa / Bracket	50.SS.457.D
24	9	Dado M6 autobloccante / M6 locknut	50.73.112.1
25	14	Rondella M6 / Washer M6	50.72.027.1
26	7	Vite M6 x 20 / Screw M6 x 20	50.73.422.1
27	1	Staffa porta frecce / Direction indicators bracket	50.SS.270.1

**APPLICAZIONI / APPLICATIONS**

CODICE / CODE	TUBO / PIPE	SILENZIATORE / MUFFLER	FASCETTA / CLAMP	CODICE OMOL. / HOMOL. CODE
D.026.L7	INOX / ST. STEEL	INOX (COPPE CARBONIO) / ST. STEEL (CARBON CAPS)	CARBONIO / CARBON FIBER	ME038 E9 1306



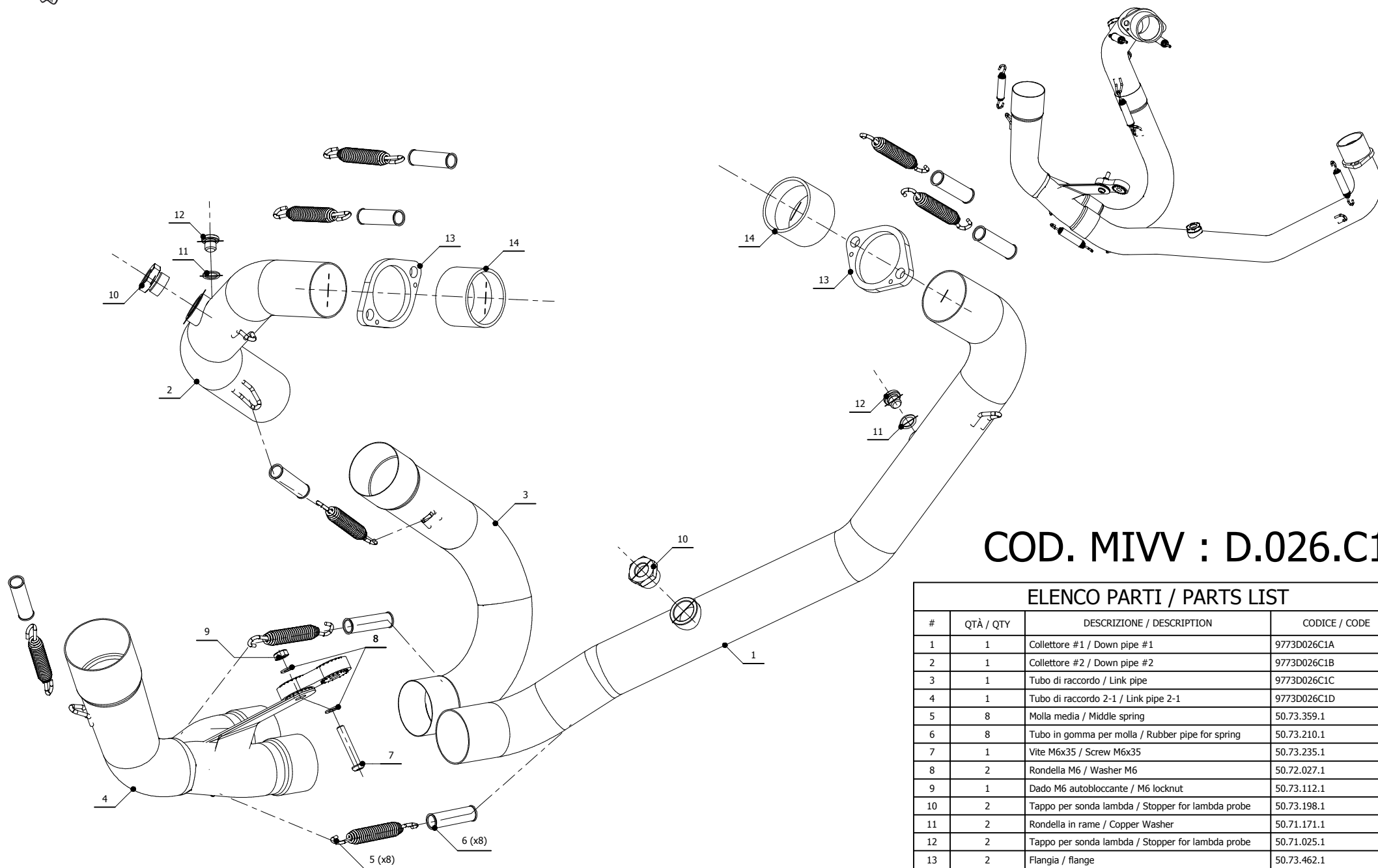
MODEL DUCATI HYPERMOTARD 796

YEAR 2010 -->

LINE SPORT

MUFFLER ELIMINA KAT / NO KAT

**SCHEMATIC**



**COD. MIVV : D.026.C1**

**ELENCO PARTI / PARTS LIST**

#	QTÀ / QTY	DESCRIZIONE / DESCRIPTION	CODICE / CODE
1	1	Collettore #1 / Down pipe #1	9773D026C1A
2	1	Collettore #2 / Down pipe #2	9773D026C1B
3	1	Tubo di raccordo / Link pipe	9773D026C1C
4	1	Tubo di raccordo 2-1 / Link pipe 2-1	9773D026C1D
5	8	Molla media / Middle spring	50.73.359.1
6	8	Tubo in gomma per molla / Rubber pipe for spring	50.73.210.1
7	1	Vite M6x35 / Screw M6x35	50.73.235.1
8	2	Rondella M6 / Washer M6	50.72.027.1
9	1	Dado M6 autobloccante / M6 locknut	50.73.112.1
10	2	Tappo per sonda lambda / Stopper for lambda probe	50.73.198.1
11	2	Rondella in rame / Copper Washer	50.71.171.1
12	2	Tappo per sonda lambda / Stopper for lambda probe	50.71.025.1
13	2	Flangia / flange	50.73.462.1
14	2	Boccola / Bush	50.73.461.1