



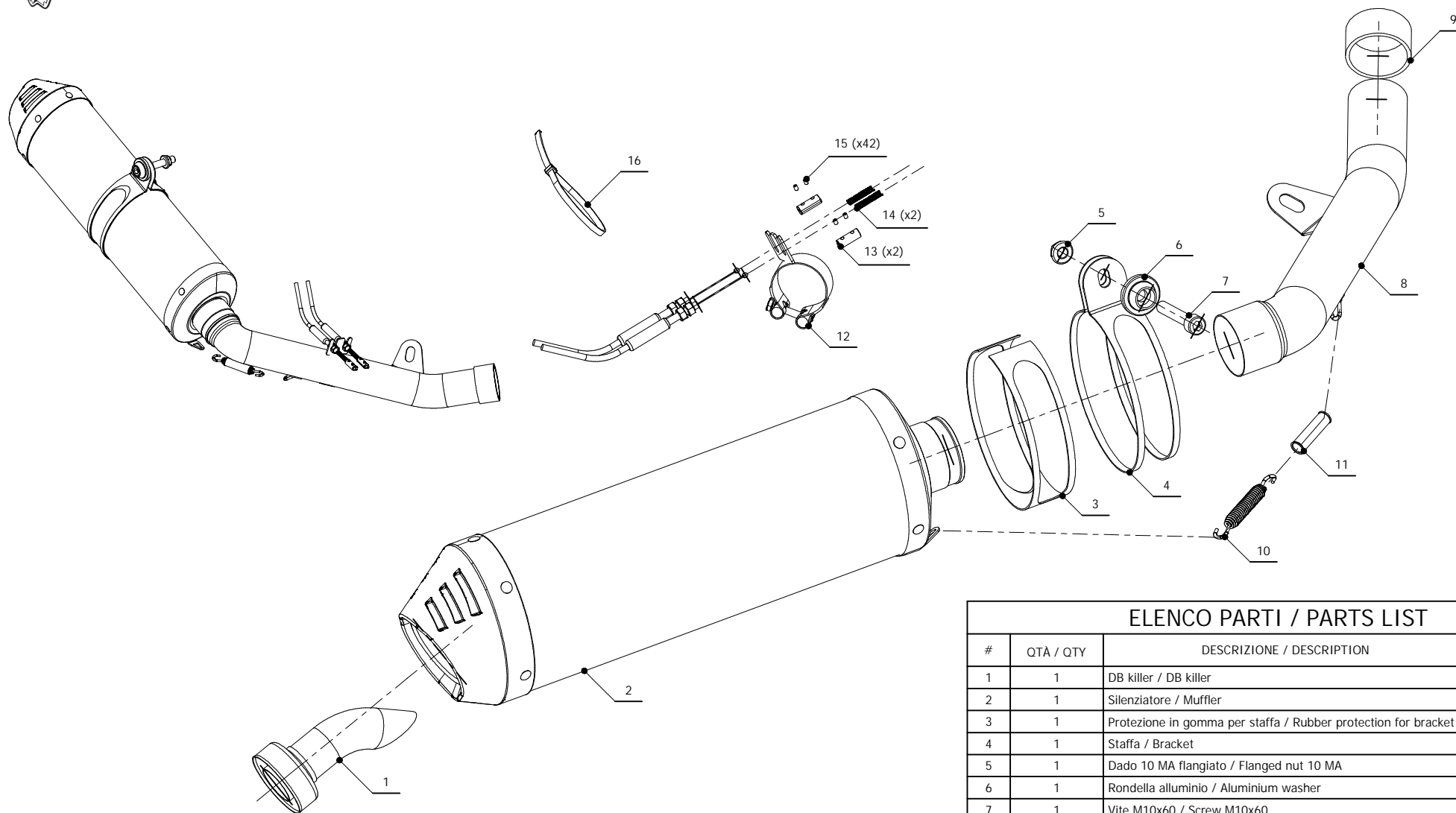
MODEL KAWASAKI Z 750

YEAR 2007-->

LINE SPORT

MUFFLER OVAL CARBON CAP

SCHEMATIC



ELENCO PARTI / PARTS LIST

| #  | QTA / QTY | DESCRIZIONE / DESCRIPTION                                      | CODICE / CODE  |
|----|-----------|----------------------------------------------------------------|----------------|
| 1  | 1         | DB killer / DB killer                                          | 50.DK.020.0    |
| 2  | 1         | Silenziatore / Muffler                                         | OVAL           |
| 3  | 1         | Protezione in gomma per staffa / Rubber protection for bracket | 50.73.041.1    |
| 4  | 1         | Staffa / Bracket                                               | 50.SS.002.0    |
| 5  | 1         | Dado 10 MA flangiato / Flanged nut 10 MA                       | 50.73.332.1    |
| 6  | 1         | Rondella alluminio / Aluminium washer                          | 50.73.120.1    |
| 7  | 1         | Vite M10x60 / Screw M10x60                                     | 50.73.135.1    |
| 8  | 1         | Tubo di raccordo / Link pipe                                   | 9773K018S7     |
| 9  | 1         | Guarnizione in grafite / Graphite bush                         | 50.72.49.55.29 |
| 10 | 1         | Molla / Spring                                                 | 50.71.080.1    |
| 11 | 1         | Tubo in gomma per molla / Rubber pipe for spring               | 50.73.210.1    |
| 12 | 1         | Fascetta passacavi / fairlead clamp                            | 50.SS.139.0    |
| 13 | 2         | Morsetti in alluminio / Aluminium clamps                       | 50.73.138.1    |
| 14 | 2         | Molla / Spring                                                 | 50.73.142.1    |
| 15 | 4         | Grani M3 / Grub screws M3                                      | 50.73.140.1    |
| 16 | 1         | Fascetta in nylon / Nylon clamp                                | 50.73.360.1    |

APPLICAZIONI / APPLICATIONS

| CODICE / CODE | TUBO / PIPE     | SILENZIATORE / MUFFLER                           | FASCETTA / CLAMP | CODICE OMOL. / HOMOL.CODE |
|---------------|-----------------|--------------------------------------------------|------------------|---------------------------|
| K.018.LEC     | INOX / ST.STEEL | CARBONIO (COPPA CARBONIO) / CARBON (CARBON CAP)  | INOX / ST.STEEL  | ME008 e9 1176             |
| K.018.LNC     | INOX / ST.STEEL | TITANIO (COPPA CARBONIO) / TITANIUM (CARBON CAP) | INOX / ST.STEEL  | ME008 e9 1176             |