



**MODEL** KTM 690 DUKE

**YEAR** 2012 -->

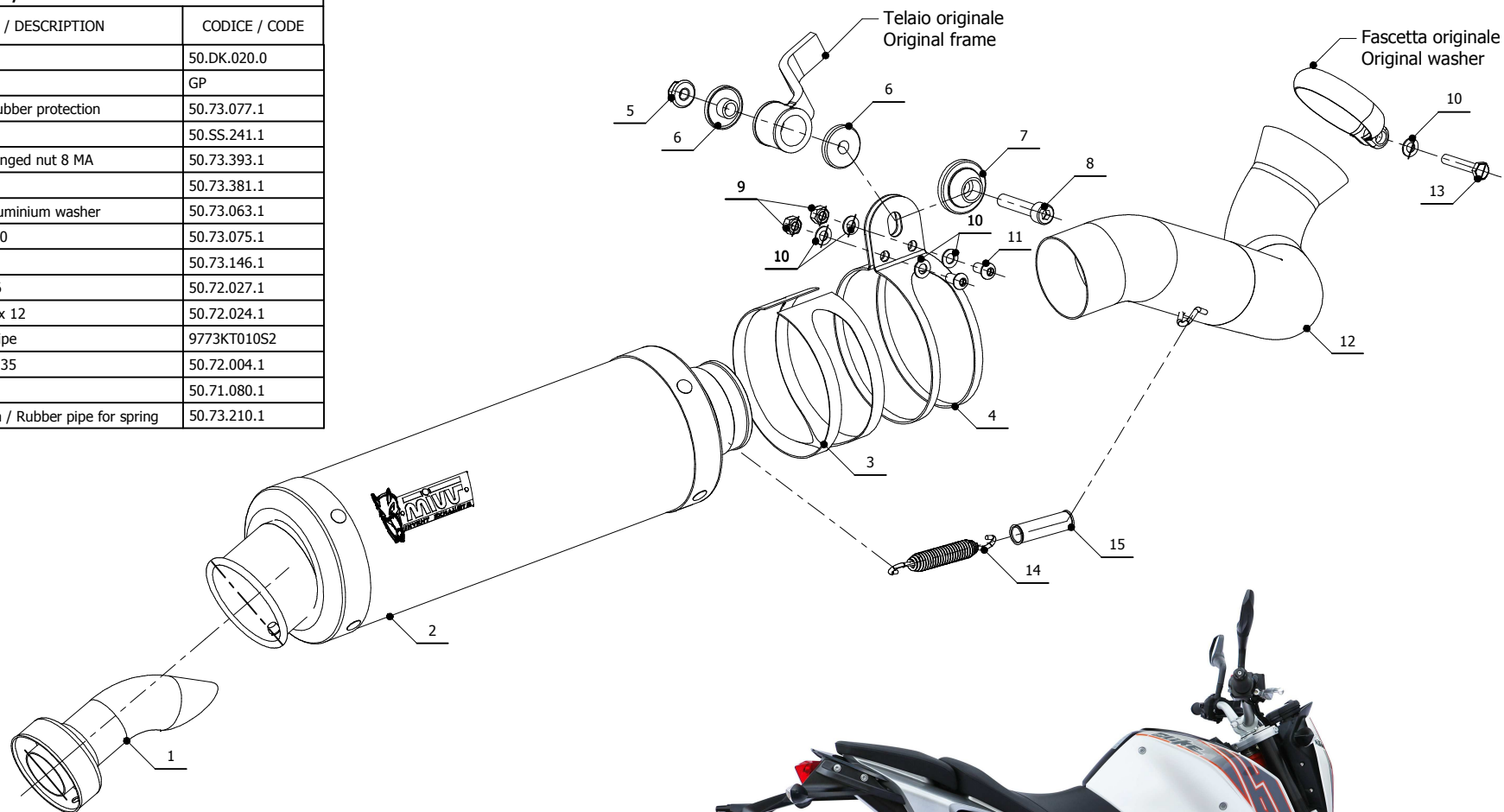
**LINE** SPORT

**MUFFLER** GP

**SCHEMATIC**

**ELENCO PARTI / PARTS LIST**

#	QTÀ / QTY	DESCRIZIONE / DESCRIPTION	CODICE / CODE
1	1	DB killer / DB killer	50.DK.020.0
2	1	Silenziatore / Muffler	GP
3	1	Protezione in gomma / Rubber protection	50.73.077.1
4	1	Staffa / Bracket	50.SS.241.1
5	1	Dado 8 MA flangiato / Flanged nut 8 MA	50.73.393.1
6	2	Boccola / Bush	50.73.381.1
7	1	Rondella in alluminio / Aluminium washer	50.73.063.1
8	1	Vite M8x40 / Screw M8x40	50.73.075.1
9	2	Dado M6 / Nut M6	50.73.146.1
10	5	Rondella M6 / Washer M6	50.72.027.1
11	2	Vite M6 x 12 / Screw M6 x 12	50.72.024.1
12	1	Tubo di raccordo / Link pipe	9773KT010S2
13	1	Vite M6x35 / Screw M6 x 35	50.72.004.1
14	1	Molla lunga / Long spring	50.71.080.1
15	1	Tubo in gomma per molla / Rubber pipe for spring	50.73.210.1



**APPLICAZIONI / APPLICATIONS**

CODICE / CODE	TUBO / PIPE	SILENZIATORE / MUFFLER	FASCETTA / CLAMP
KT.010.L2S	INOX / ST. STEEL	CARBONIO / CARBON FIBER	INOX / ST. STEEL
KT.010.L6S	INOX / ST. STEEL	TITANIO / TITANIUM	INOX / ST. STEEL
KT.010.LXB	INOX / ST. STEEL	STEEL BLACK	INOX / ST. STEEL