



MODEL KTM 990 SUPERMOTO SMT

YEAR 2009 -->

LINE SLIP ON

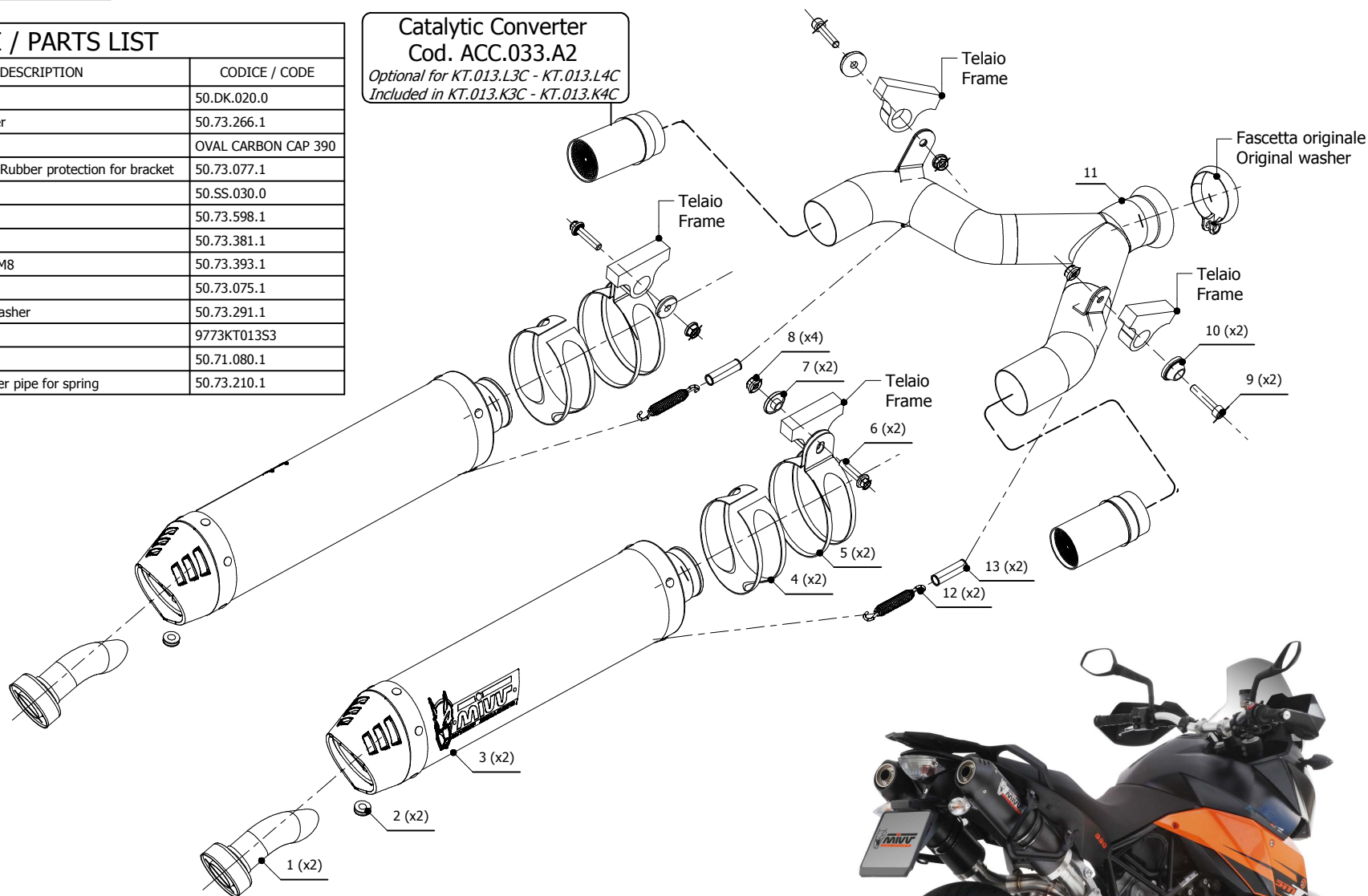
MUFFLER OVAL CARBON CAP

SCHEMATIC

ELENCO PARTI / PARTS LIST

#	QTÀ / QTY	DESCRIZIONE / DESCRIPTION	CODICE / CODE
1	2	DB killer / DB killer	50.DK.020.0
2	2	Tappo in gomma / Rubber stopper	50.73.266.1
3	2	Silenziatore / Muffler	OVAL CARBON CAP 390
4	2	Protezione in gomma per staffa / Rubber protection for bracket	50.73.077.1
5	2	Staffa / Bracket	50.SS.030.0
6	2	Vite M8x35 / Screw M8x35	50.73.598.1
7	2	Boccola / Bush	50.73.381.1
8	4	Dado M8 flangiato / Flanged nut M8	50.73.393.1
9	2	Vite M8x40 / Screw M8x40	50.73.075.1
10	2	Rondella alluminio / Aluminium washer	50.73.291.1
11	1	Tubo di raccordo / Link pipe	9773KT013S3
12	2	Molla lunga / Long spring	50.71.080.1
13	2	Tubo in gomma per molla / Rubber pipe for spring	50.73.210.1

Catalytic Converter
Cod. ACC.033.A2
Optional for KT.013.L3C - KT.013.L4C
Included in KT.013.K3C - KT.013.K4C



APPLICAZIONI / APPLICATIONS

CODICE / CODE	SILENZIATORE / MUFFLER	TUBO / PIPE	FASCETTA / CLAMP	NOTE
KT.013.L3C	CARBONIO (COPPA CARBONIO) / CARBON (CARBON CAP)	INOX / ST.STEEL	INOX / ST.STEEL	CATALYTIC CONVERTER NOT INCLUDED
KT.013.L4C	TITANIO (COPPA CARBONIO) / TITANIUM (CARBON CAP)	INOX / ST.STEEL	INOX / ST.STEEL	CATALYTIC CONVERTER NOT INCLUDED
KT.013.K3C	CARBONIO (COPPA CARBONIO) / CARBON (CARBON CAP)	INOX / ST.STEEL	INOX / ST.STEEL	CATALYTIC CONVERTER INCLUDED
KT.013.K4C	TITANIO (COPPA CARBONIO) / TITANIUM (CARBON CAP)	INOX / ST.STEEL	INOX / ST.STEEL	CATALYTIC CONVERTER INCLUDED