

#### Attention

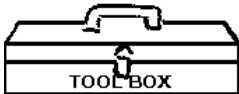


Special notes and cautionary measures which can prevent damage to the accessory or motorcycle.

#### Note:



Tips for facilitation of operation, control and adjustment, as well as maintenance work.



#### TOOLS REQUIRED:

Allen Wrench, 3mm  
Box End Wrench, 10mm

#### PARTS LIST

Index	Description		Qty.
1	Windshield, Quantum Coated Lexan® polycarbonate		1
<b>Kit-Z2225</b>			
2	Bracket, Left	37-378302-000	1
3	Bracket, Right	37-378303-000	1
<b>Bag #780</b>			
4	Back Plate	37-378304-000	2
5	Button Screw M5 x 20	51-516220-000	4
6	Button Screw M6 x 20	51-516323-000	4
7	Nut, M5	42-423050-000	4
8	Wellnut, M6	42-472001-000	4
9	Gasket, Windshield	75-762420-000	2
10	Gasket, Bracket, Outer	75-762421-000	2
11	Gasket, Bracket, Inner	75-762422-000	2

#### INSTALLATION



**Right and left side of motorcycle is determined while sitting on the bike.**

1. Remove the stock windscreen from the OEM mount. Keep mount bracket in place.



**Stock windscreen mount also functions as gauge mount and must stay on the motorcycle.**

2. Install the right side bracket to motorcycle as shown in figure 1. (3mm Allen Wrench, 10mm Box End Wrench)

3. Repeat on left side of motorcycle.

4. Install Windshield to Brackets as shown in figure 2. (3mm Allen Wrench)

5. Tighten the screws firmly.

#### MAINTENANCE

**Cleaning:** Wash with a clean soft cloth, plenty of warm water and, if necessary, a non-abrasive soap such as dishwashing liquid. Flannel or soft chamois make good cleaning cloths.

**Paint, glue residue removal:** Moisten cotton with a small amount of Naphtha or Turpentine followed by a wash as above. Do not clean polycarbonate in hot sun or high temperatures. Do not clean the screen with glass cleaners. Do not use rain protective products on the screen. The solvent action of the alcohol in these products will destroy the screen. Do not allow brake fluid, alcohol, or strong solvents to contact the screen.

Figure 1

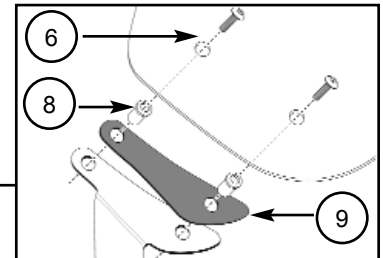
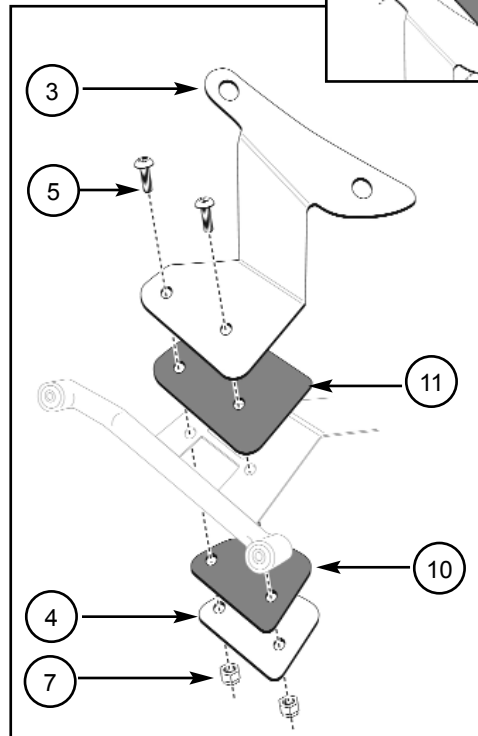


Figure 2