



EVOTECH®
P E R F O R M A N C E

Installation Instructions



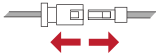
DUCATI SCRAMBLER ICON and URBAN ENDURO 2015 TAIL TIDY

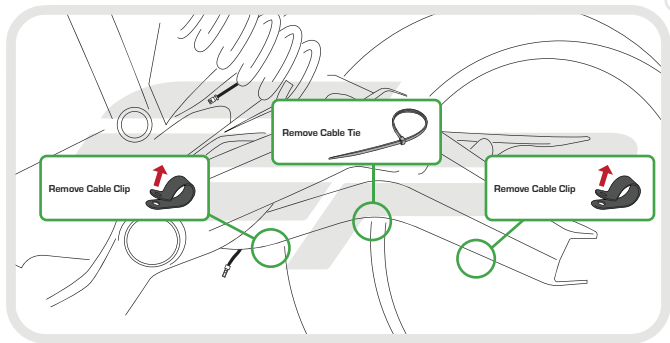
Product Reference - 12259

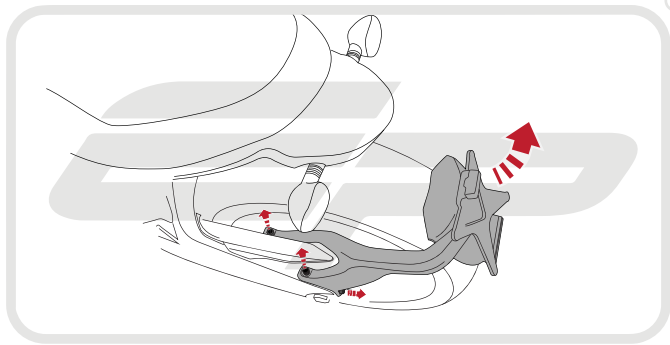
Kit Contents

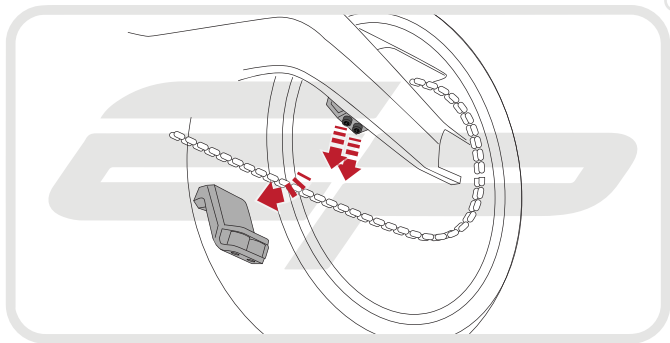
- | | |
|---|---|
| A 1 x Tail Tidy Mounting Plate | I 2 x M5 - 12 Countersink Screws |
| B 1 x Licence Plate Holder | J 2 x M4 - 8 Black Button Heads |
| C 1 x Reflector Bracket | K 2 x M8 Washers |
| D 1 x Reflector | L 2 x Number Plate Screws |
| E 1 x M6 - 12 Black Button Head | M 2 x Number Plate Nuts |
| F 1 x M6 Washer | N 4 x M8 - 16 Black Button Heads |
| G 2 x Mounting Spacers | O 6 x Cable Ties |
| H 2 x M5 - 20 Black Button Heads | |

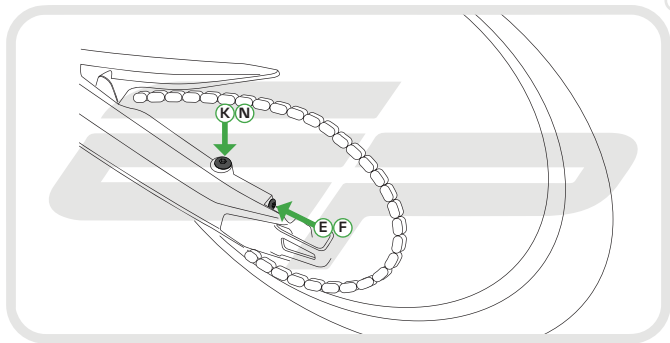
Disconnect Number Plate light
and remove cable clip

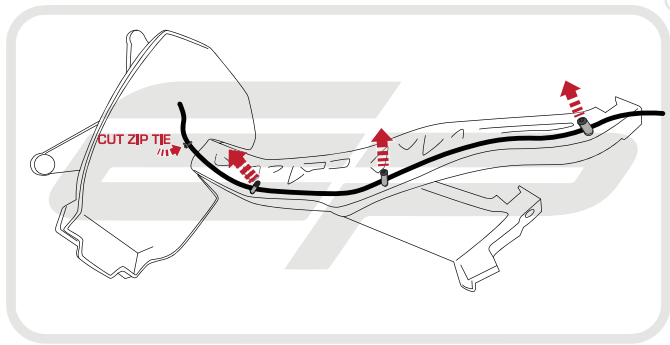


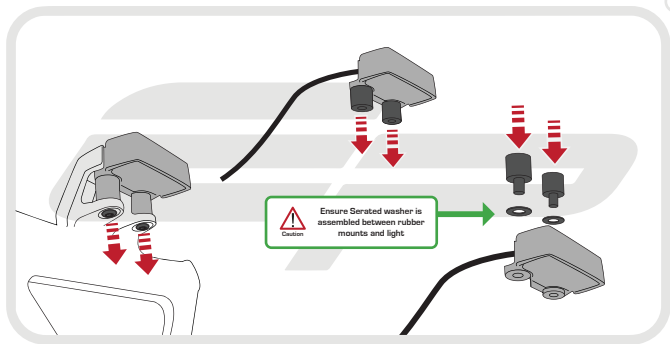


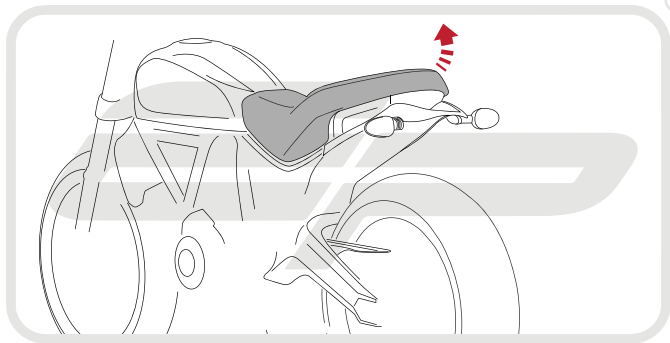


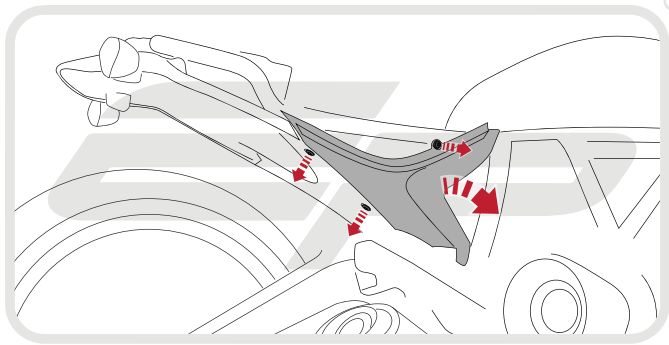


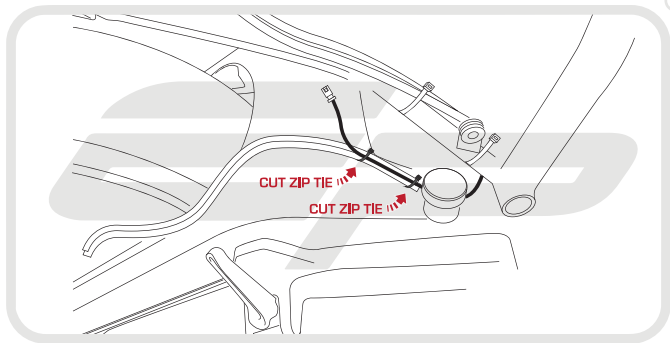


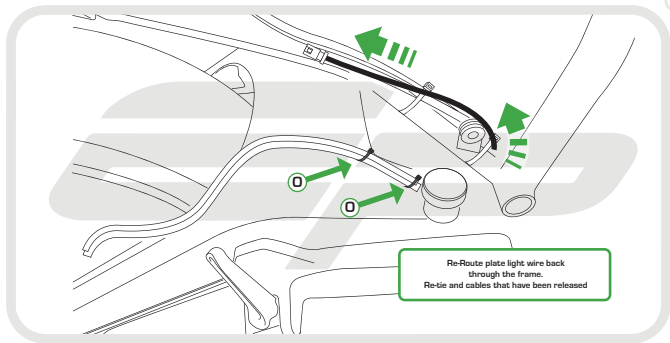


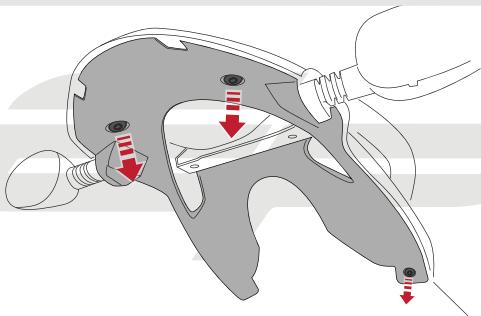


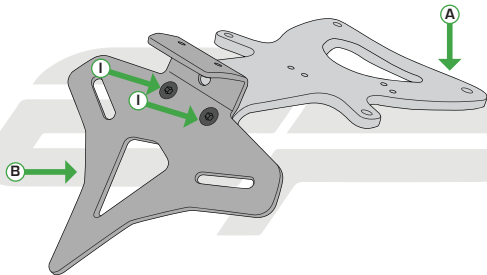


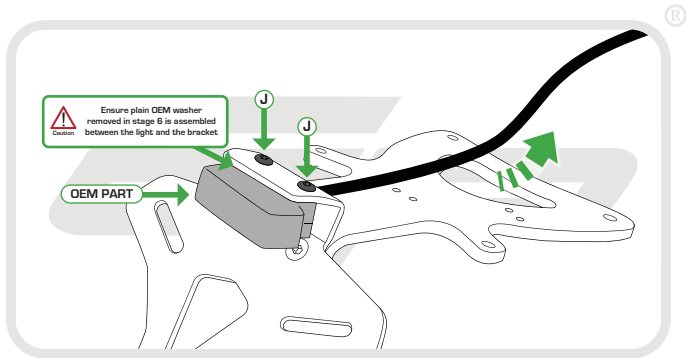


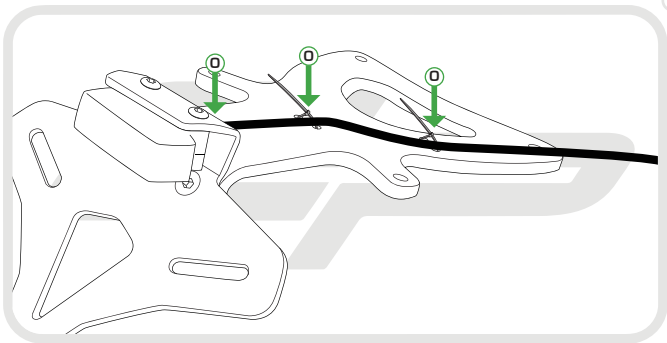


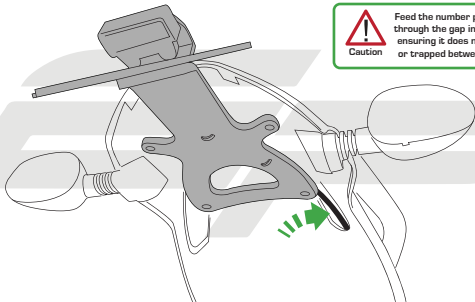






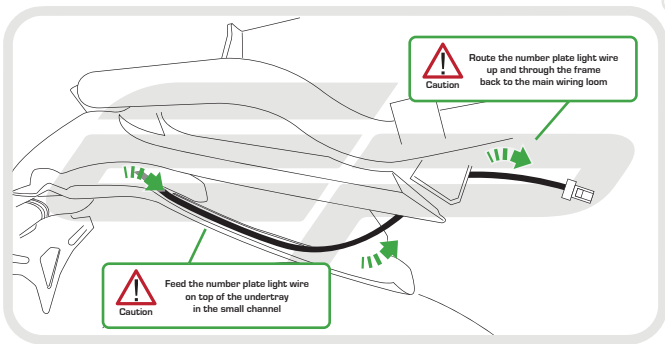


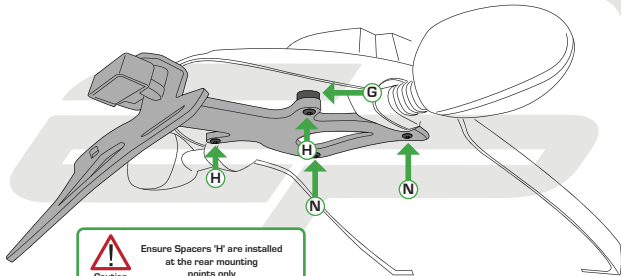




Caution

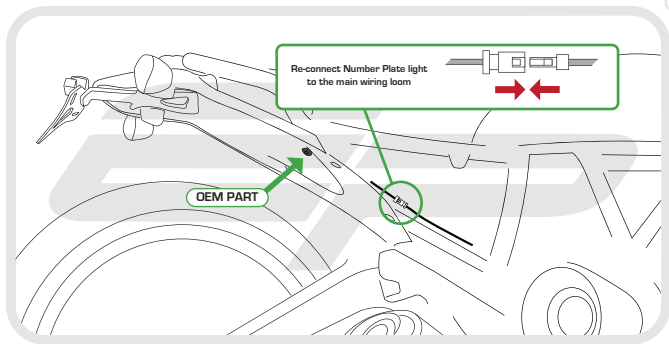
Feed the number plate light wire through the gap in the undertray ensuring it does not get caught or trapped between the plastic





Caution

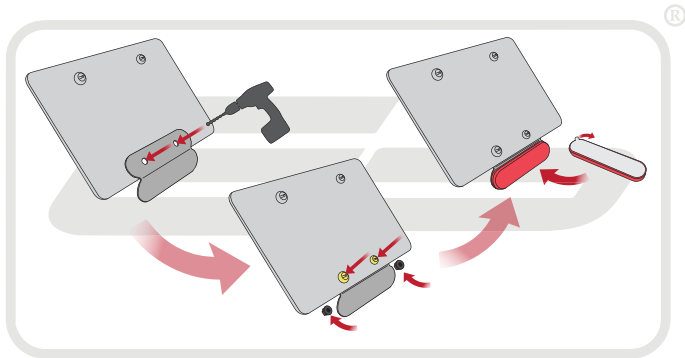
Ensure Spacers 'H' are installed
at the rear mounting
points only





Reverse Stages
9 and 8

Reflector Bracket Installation



EVOTECH[®]
P E R F O R M A N C E



ESSENTIAL CHECKS



After installation of your tail tidy ensure that the licence plate does not contact the rear tyre when suspension is fully compressed.

Ensure all electrics including indicators, tail light, brake light and licence plate light lights are working correctly before riding the motorcycle.

It is recommended that periodic inspections are made to ensure that all fixings are fully tightend.



EVOTECH®
P E R F O R M A N C E

www.evotech-performance.com