

Lock-it Rear bag attachment for Sportracks

COMPLETE SET

Item-no.: 506.100

NOTE: If you already have a tank bag that can be used as a rear bag, you do not need this kit, you can use 506.150

SPORTRACK



Assembling instructions

The kit includes the following parts:

Quant description

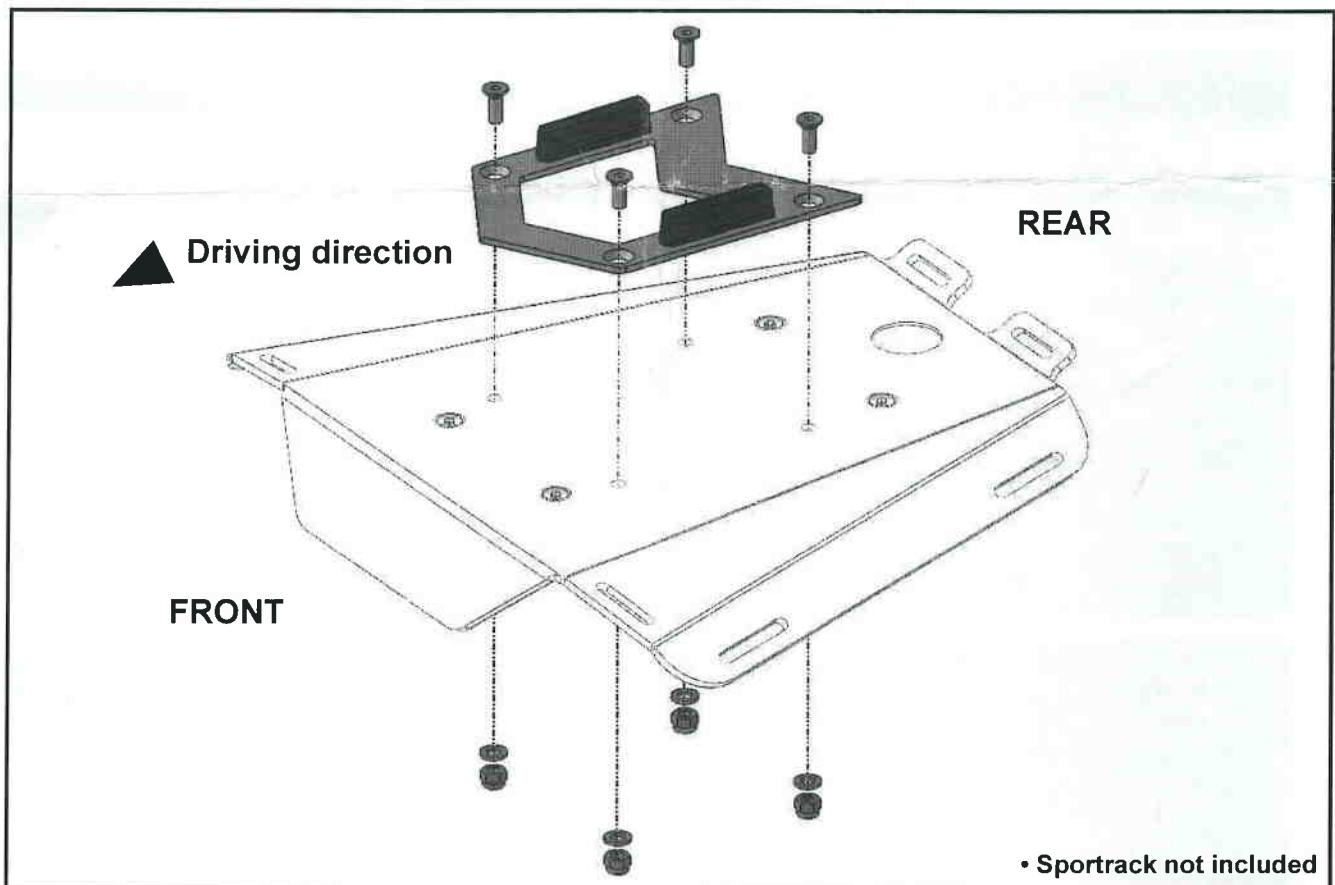
- 1 mounting set with holder
- 1 mounting set 506.000
- 4 countersunk head screws M6 x 16
- 4 washers \varnothing 6,4
- 4 self lock nuts M6
- 2 cover magnetic domes

Preparing:

Press the 4 plastic plugs out of the borings.

Fastening of the sportrack attachment:

Position the sportrack attachment on the Sportrack at the 4 free holes and insert the countersunk head screws M6x16 (Note the direction!). From inside use washers \varnothing 6,4 and the self-locking nuts M6.



Hepco & Becker GmbH
An der Steinmauer 6
D-66955 Pirmasens
Tel.: +49 6331 - 1453 - 100
Fax: +49 6331 - 1453 - 120
eMail: vertrieb@hepco-becker.de
www.hepco-becker.de

Control all screw connections after the assembling
for tightness!

Mounting set for tank bags and rear bags incl. lock unit

Magnetic/mechanical lock FIDLOCK patented

Item-no.: 506.000

for
Lock it TANKRING



The kit includes the following parts:		
Quant	description	
		1 lock unit
4	filister head screw M5x20	4 self-nock nut M5
4	washer Ø5,3	1 distance plate
4	body washer Ø5,3xØ15mm	1 tie belt 95cm
		4 adhesive pads

NOTICE

This set is used for the conversion of another tank bag on an existing Lock it tank ring.

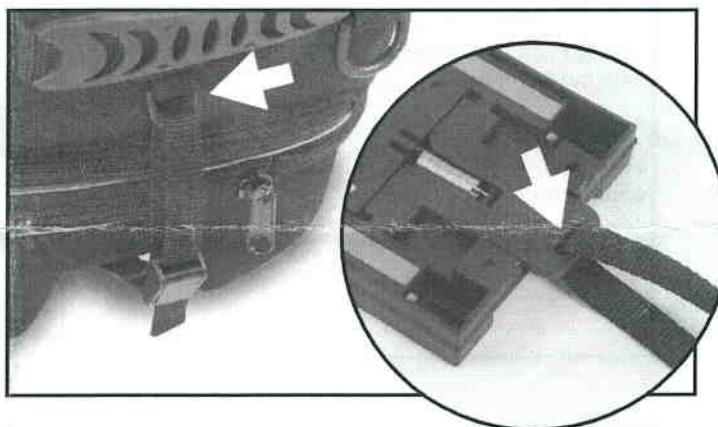
The magnetic unit and lock unit are built to match and must only be installed into sets approved by Hepco & Becker. Optimum fastening can only be guaranteed with the corresponding Hepco & Becker tank bags since they are designed with a specially reinforced base!

We recommend you have your local specialist dealer install the lock unit onto the tank bag!

Assembling instructions

Preparing

Pull the tie belt through the opening of the lock unit and the eyelet at the tank bag.



Getting the right position of the lock unit

Place the lock unit onto the mounted tank ring and make sure it snaps in.

Stick the adhesive pads over the bolt holes. Pull the backing off the tape, get the tank bag into position and then push it down firmly onto the tape.

Note that the position of the bag depends on the shape of the respective tank and on the turning angle of the handlebars.

Make sure the tank bag does not restrict the movement of the handlebars before permanently bolting it on!

Carefully pull the pull strap to loosen and remove the lock unit with the tank bag still stuck to it.



**Control all screw connections after the assembling for tightness!
Do not exceed the maximum load of 5 kg**



Hepco & Becker GmbH
An der Steinmauer 6
D-66955 Pirmasens
Germany

Tel.: 0049 6331 - 1453 - 100
Fax: 0049 6331 - 1453 - 120
eMail: vertrieb@hepco-becker.de
www.hepco-becker.de

Mounting set for tank bags and rear bags incl. lock unit

Magnetic/mechanical lock FIDLOCK patented

Item-no.: 506.000

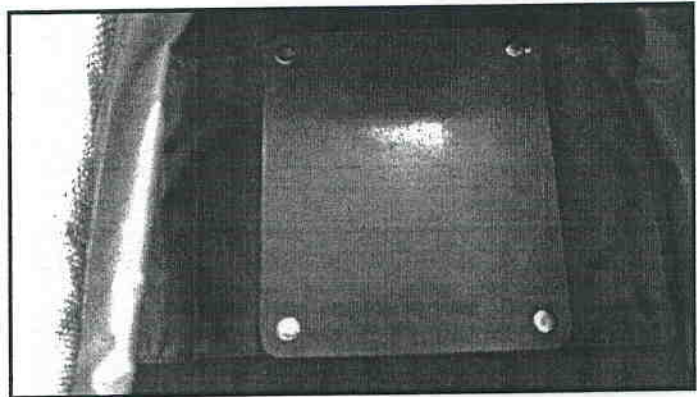
for
Lock **it** TANKRING
FIDLOCK



Preparing for drilling the base plate

Before drilling into the bag, fold the fabric covers away to the side and make sure they do not fold back in when drilling.

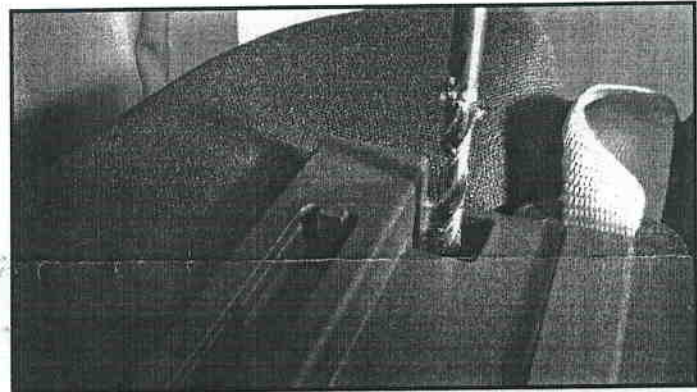
Otherwise the fabric could be damaged!



Drilling the base plate

Drill $\varnothing 6$ mm diameter fastening holes through the existing bolt holes.

Tip:
When drilling down, put a block of wood as a counterpart.

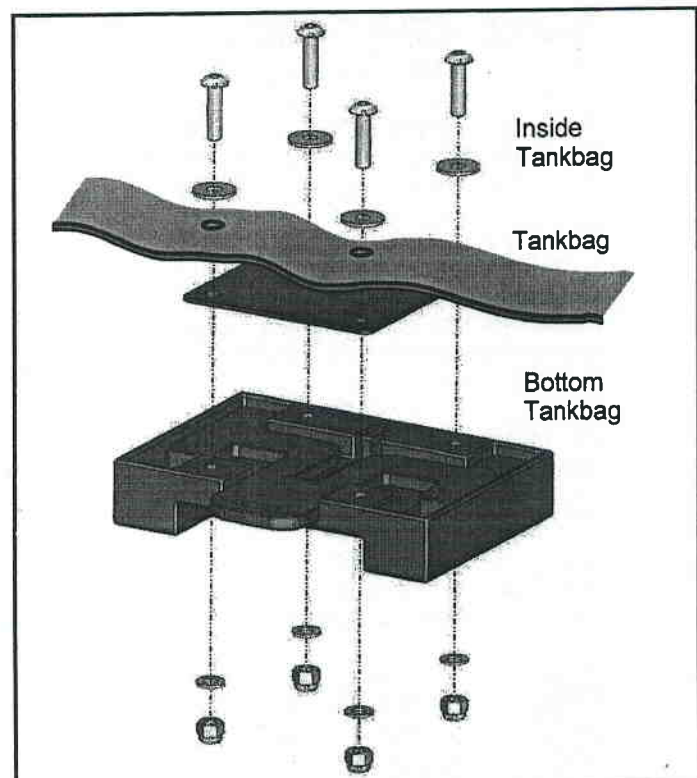


Bolting the lock unit on

Push the M5x20 pan head screws, each with a $\varnothing 5.3$ x $\varnothing 15$ mm diameter flat washer, through from the inside. From the outside, place the distance plate over the bolts, place the lock unit over them and bolt it down using $\varnothing 5,3$ washers and M5 locknuts.

When tightening the nuts, make sure the tongue of the lock unit is free and does not rub against the fabric!

The screws must be tightened so far that on the outside at least one thread is visible, to ensure the effect of the self-locking nut.



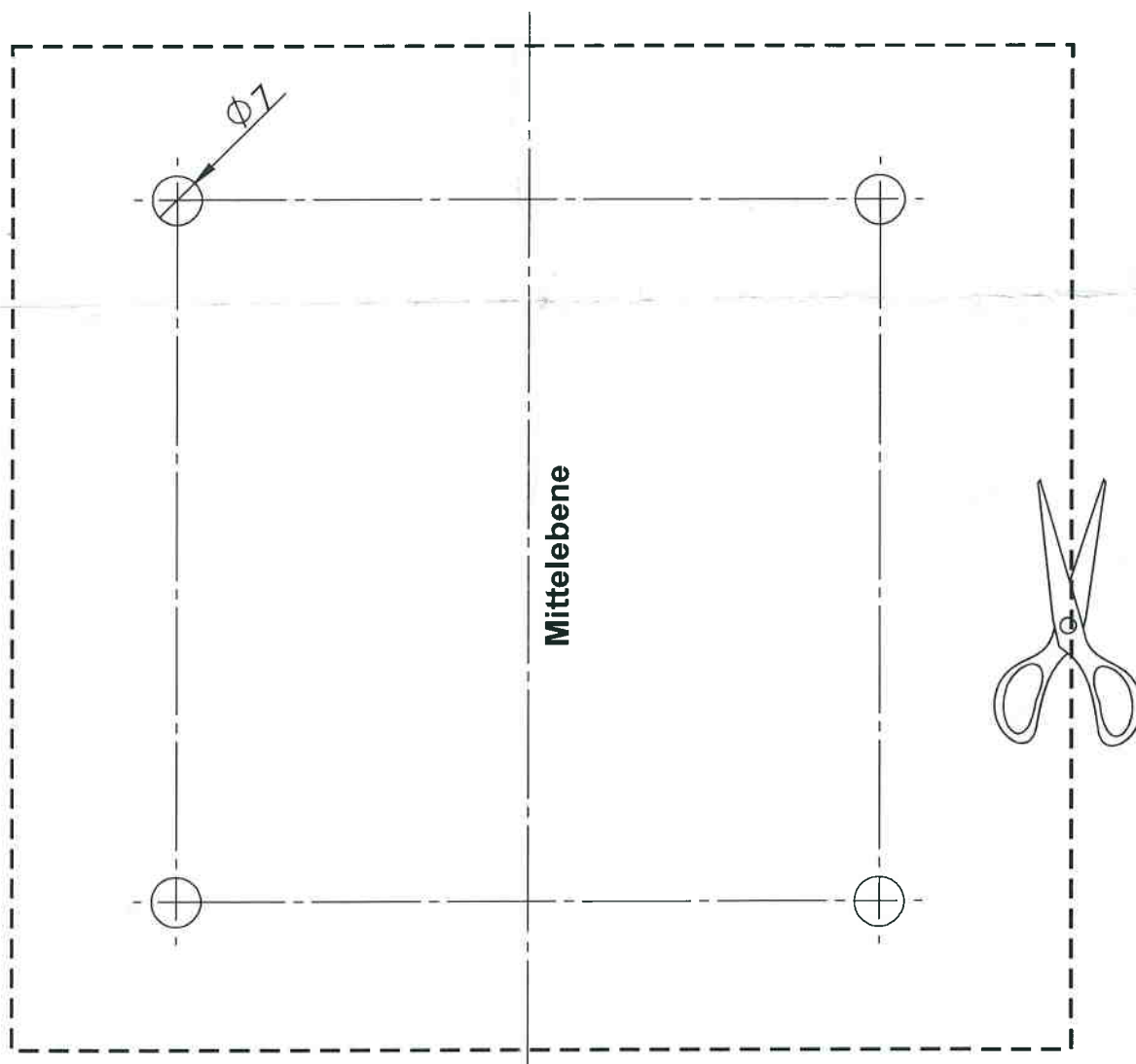
Bohrschablone für
Lock-it Hecktaschenbefestigung
für Sportracks

Lock-it Rear bag attachment
for Sportracks

SPORTRACK



Vor dem Bohren Mass kontrollieren !
Control dimension before drilling !



Achtung ! Wenn Sie die Anleitung selber ausdrucken, beachten Sie unbedingt den Hinweis: Damit die Schablone 1:1 wiedergegeben wird, muß der Ausdruck ohne Anpassung an die Druckränder des Druckers (also in Originalgröße) gedruckt werden. Nach dem Ausdruck Maß kontrollieren !

If you print the manual yourself, be sure to observe the following notice:
if you print the drilling pattern, you have to print it in original size (100%) without downsizing/enlarging to the paper format. Control dimension after printing.