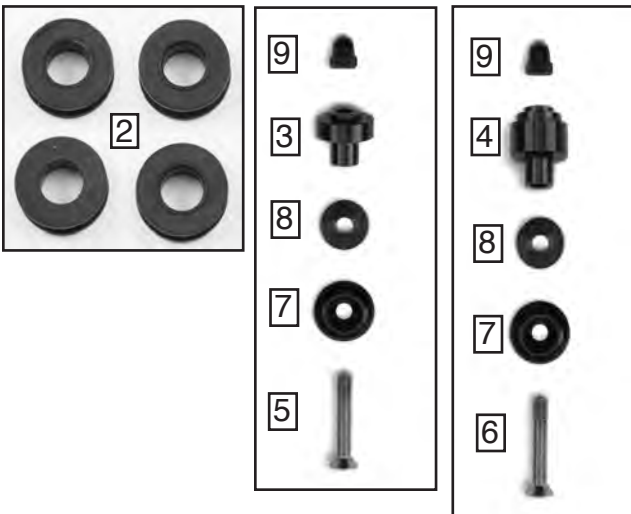


Read these instructions carefully and thoroughly before beginning work. Dealers, if installing this windscreen for a customer, please give them this manual. It contains information needed to properly maintain and use this product.

	<p>Attention: Special notes and cautionary measures which can prevent damage to the accessory or motorcycle.</p>		<p>Note: Tips for facilitation of operation, control and adjustment, as well as maintenance work.</p>
---	---	---	--

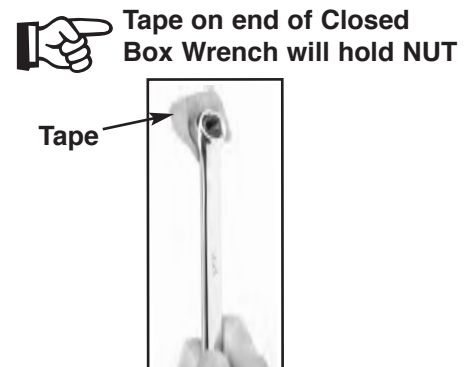
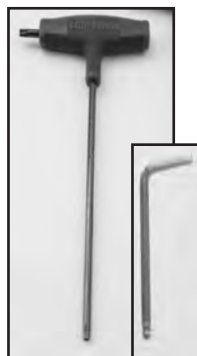
CONTENTS OF KIT

Item	Description	Part No.	Qty.	Notes, Tools
1	VStream® Windscreen		1	
Bag #1114				
2	Grommet	44-447350-000	4	
3	Bushing, Inner	49-495264-000	2	
4	Bushing, Outer	49-495263-000	2	
5	Screw, M5 X 30, Inner	51-514124-000	2	5 mm Hex Wrench; Closed Box Wrench with Tape
6	Screw, M5 X 35, Outer	51-514126-000	2	5 mm Hex Wrench; Closed Box Wrench with Tape
7	Cap, Black Aluminum	34-346048-000	4	
8	Washer, Flat	49-490105-000	4	
9	Nut, M5, Acorn	42-483013-000	4	5 mm Hex Wrench; Closed Box Wrench with Tape



TOOLS REQUIRED:

- T-25 Torx
- 5mm Hex Wrench
- 5mm Closed Box Wrench
- Tape



VStream® windscreen patent no. 7,387,328

PREPARATION

1. Place motorcycle securely on its centerstand.
2. Remove the stock windscreen. Hardware will not be re-used. (T25 Torx)

INSTALLATION

1. Install Grommets (2) into holes of windscreen. **Figure 1**

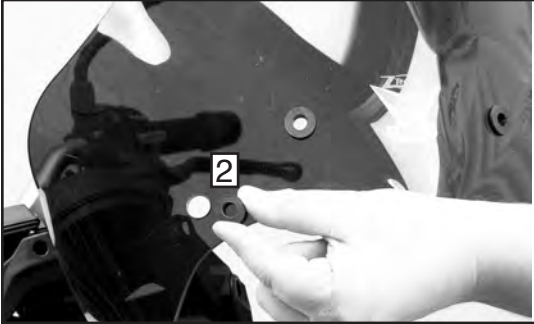


Figure 1

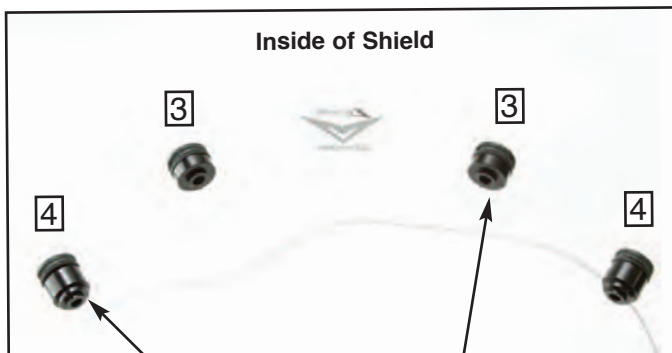


Figure 2

2. From inside of screen install the 2, Outer Bushings (4) and the 2, Inner Bushings (3). **Figure 2.**

OUTER MOUNT LOCATIONS, A

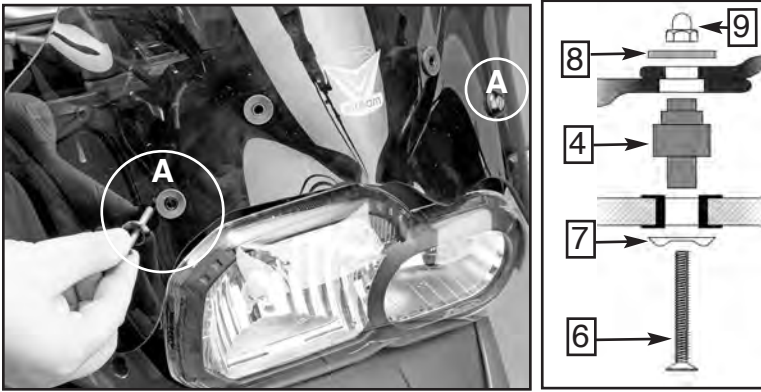


Figure 3

INSTALLATION

3. Start at the outer mount locations (A) and install windscreen using screw assembly as shown in figure 3. (5mm Hex Wrench, Closed Box Wrench) **Figure 3.**

INNER MOUNT LOCATIONS, B

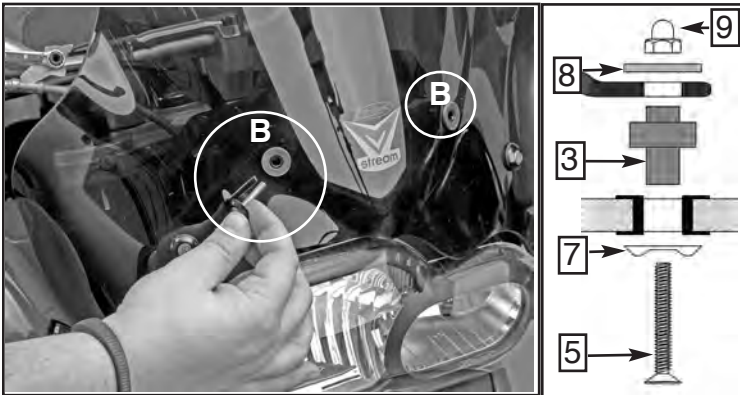


Figure 4

4. Install windscreen at the inner mount (B) locations using the screw assembly as shown in figure 4. (5mm Hex Wrench, Closed Box Wrench) **Figure 4.**

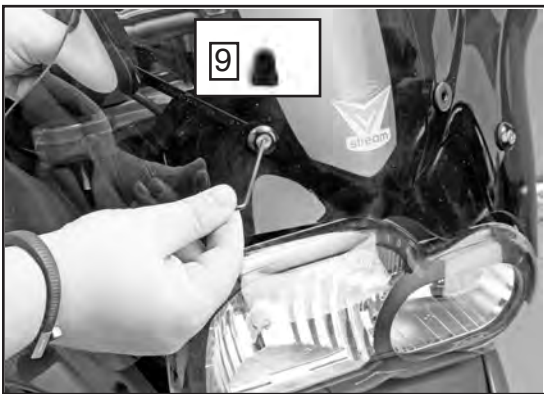


Figure 5

5. Firmly tighten the 4 screw assemblies. **Figure 5 and 6** (5mm Hex Wrench, Closed Box Wrench)

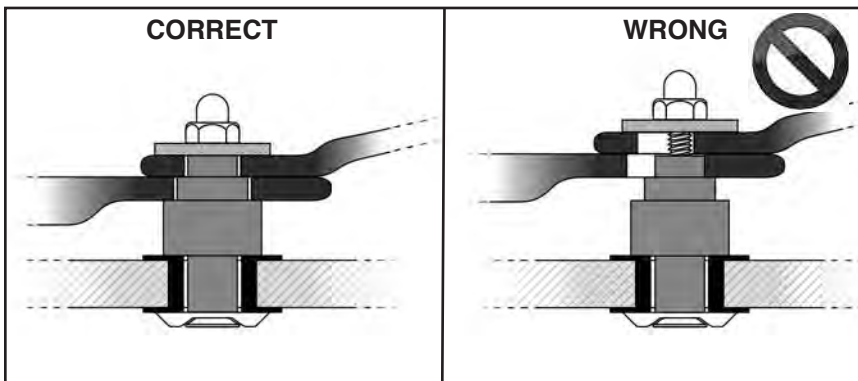


Figure 6

! Outboard and Inboard Bushings must be fully seated in frame to tighten assembly correctly. **Figure 6**



Ask for Shield Wash™ and RainZip® at your local dealer or visit www.ztechnik.com.

CLEANING AND MAINTENANCE

To clean the screen, wash with a clean soft cloth, plenty of warm water and if necessary, a non-abrasive soap such as dishwashing liquid. Flannel or soft chamois make good cleaning cloths. **Paint, glue residue or grease removal:** Moisten cotton with naphtha or turpentine followed by a wash as above. National Cycle **Shield Wash™** (N1401) makes a good daily cleaner and comes with a handy travel size bottle. Shield Wash is safe for all windshields and helmet visors.

Do not clean polycarbonate in hot sun or high temperatures. Do not clean the screen with glass cleaners.

Do not allow brake fluid, alcohol, or strong solvents to contact the screen.

RAIN REPELLENT

Do not use rain protective products made for automotive glass. We recommend National Cycle's **RainZip®** (N1410) to keep your windshield clear in rainy weather.



Register your windshield online at www.ZTechnik.com

ZTechnik 3-Year Limited Warranty

ZTechnik hereby warrants to the original registered owner of a ZTechnik polycarbonate windshield for a period of three years from the date of purchase against breakage. This limited warranty is expressly limited to the replacement of the polycarbonate windshield. This limited warranty does not include scratches, coating failure, cosmetic wear and tear, replacement of hardware, or any consequential damages or expenses including labor cost of installation, removal and/or replacement, inconvenience, inbound freight expenses or damage to any other component of the motorcycle or any other accessories. Certain chemicals, generally known as acidic hydrocarbons, are known to cause polycarbonate damage and will not be covered under this limited warranty. Please refer to the cleaning instructions supplied with all ZTechnik windshields.

Visit www.ztechnik.com for further details, or call or write ZTechnik / PO Box 158 / Maywood, IL 60153 / 708-3430400

! WARNING

Never ride your motorcycle with loose accessory mounting hardware. Check the hardware for tightness regularly.

Today's motorcycles are built with enough frame rigidity to withstand the moderate loads imposed on them by the foreseeable addition of an accessory(ies). If an accessory(ies) adversely affects your motorcycle's stability, immediately remove the accessory(ies). Do not ride a motorcycle that exhibits unsafe handling traits.

Have experienced service personnel correct any problem before riding with the accessory(ies) installed. For further questions concerning handling problems associated with an accessory(ies), contact your dealer, motorcycle manufacturer, or accessory manufacturer.

Sunlight reflected off the inside curvature of the windshield can, at certain times of day, cause extreme heat buildup on the motorcycle's instruments and possibly even melt them. Exercise care in parking to avoid this. Park your motorcycle facing the sun or place an opaque object over this area.

ZTechnik PO Box 158 Maywood, IL 60153-0158 USA

708-343-0400 / Fax: 708-343-0625 / www.ztechnik.com / e-mail: info@ztechnik.com

©2014 National Cycle, Inc.

Page 4 of 4

10-119972-000 03/14