



EVOTECH®
P E R F O R M A N C E

Installation Instructions

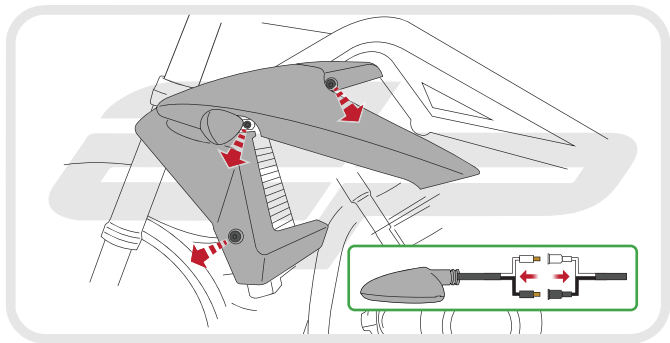


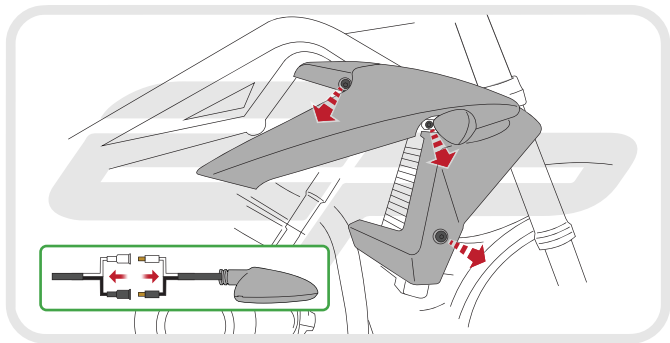
TRIUMPH STREET TRIPLE and RX CRASH PROTECTION

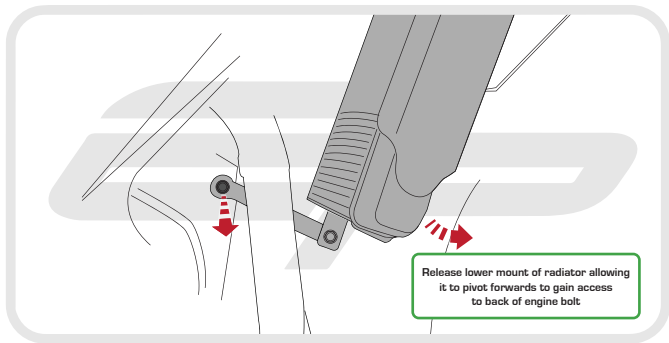
Product Reference - 12732

Kit Contents

- | | |
|--|---------------------------------------|
| A 1 x RH Bobbin Spacer (Shortest) | F 2 x Mounting Bosses |
| B 1 x LH Bobbin Spacer (Longest) | G 2 x Impact Absorbing Washers |
| C 1 x LH Bobbin Frame Spacer | H 2 x M10 Large Washers |
| D 1 x M10 - 60 x 1.25 Bolts | I 2 x M10 Standard Washers |
| E 2 x Bobbin Heads | J 3 x M10 - 80 x 1.25 Bolts |



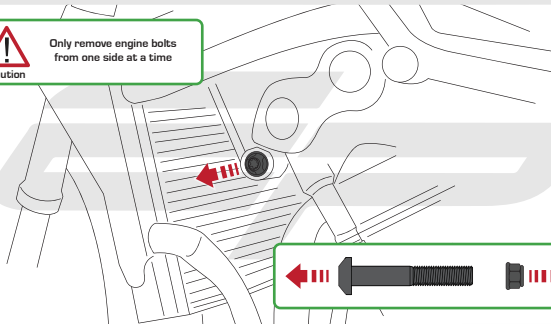






Caution

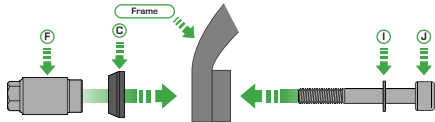
Only remove engine bolts
from one side at a time

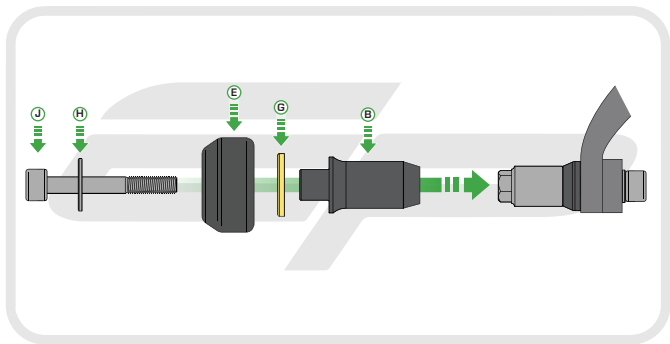




Caution

Manufacturers Torque
Specification
(Nm)





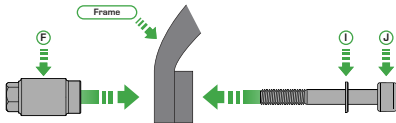


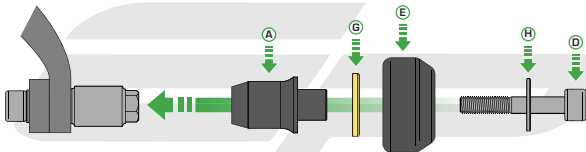
Only remove engine bolts
from one side at a time





Manufacturers Torque
Specification
(Nm)







Reverse Stages

3 - 1



ESSENTIAL CHECKS



It is recommended that periodic inspections are made to ensure that all bolts are tightened to the specified torque settings.

Should the bike be involved in an accident a thorough inspection should be made and any components that have taken an impact, no matter how small, be replaced



EVOTECH[®]
P E R F O R M A N C E

www.evotech-performance.com