



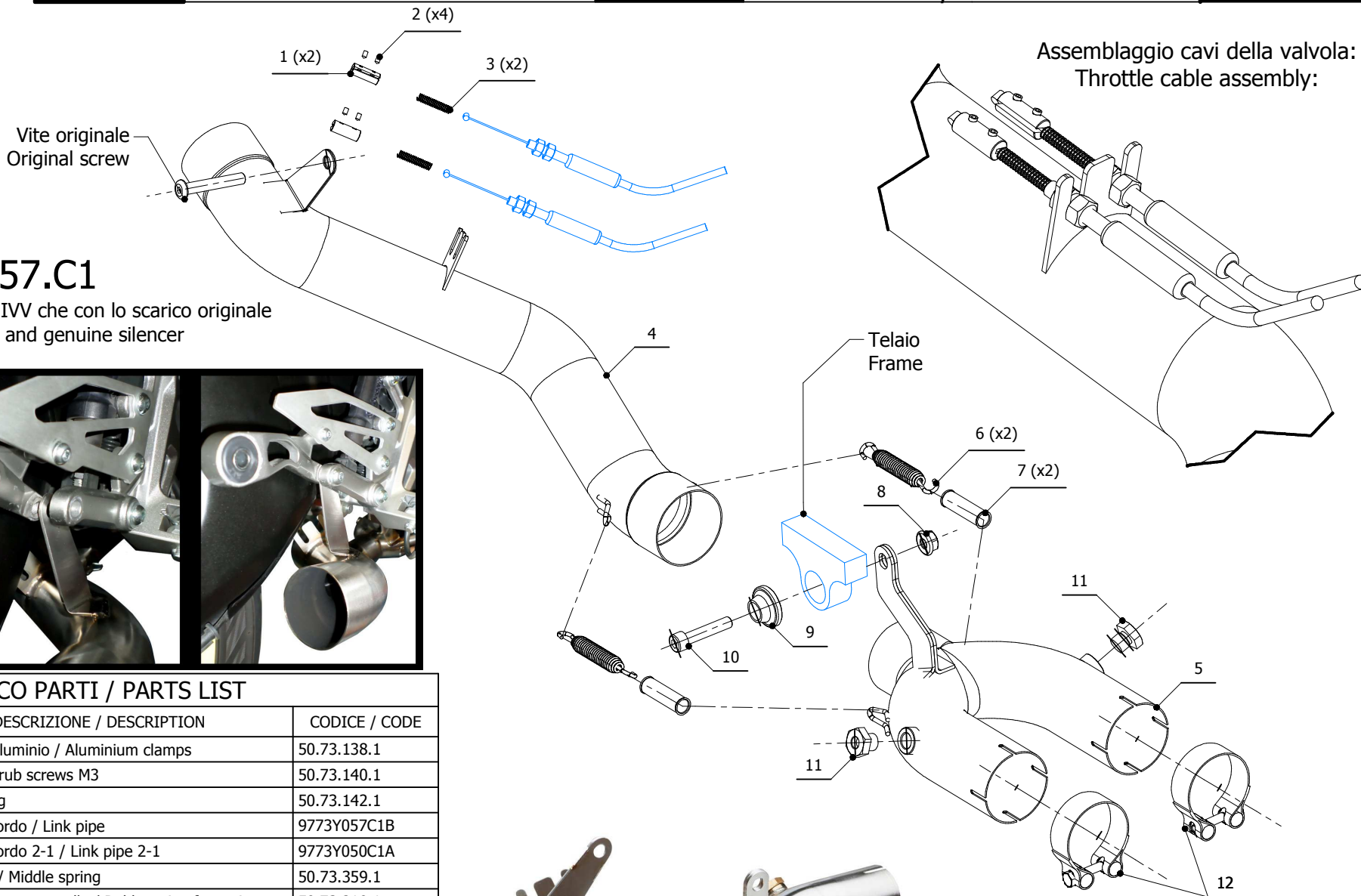
MODEL YAMAHA MT-10

YEAR 2016 -->

LINE SPORT

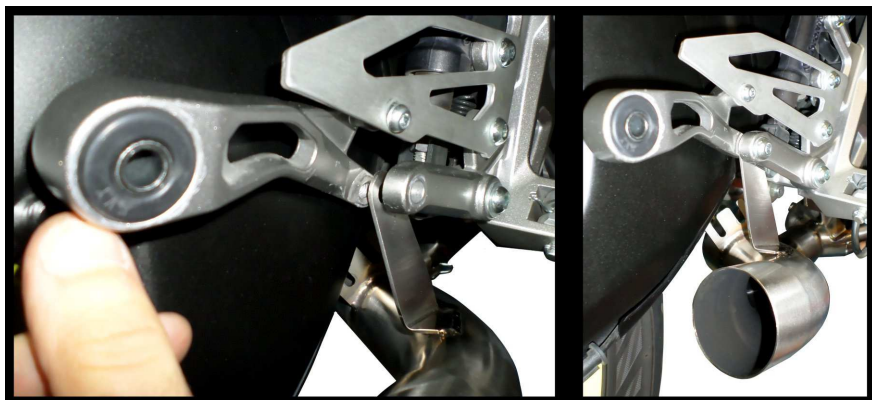
MUFFLER ELIMINA KAT / NO KAT

SCHEMATIC



Y.057.C1

Monta sia coi silenziatori MIVV che con lo scarico originale
It fits both MIVV and genuine silencer



ELENCO PARTI / PARTS LIST

| # | QTÀ / QTY | DESCRIZIONE / DESCRIPTION | CODICE / CODE |
|----|-----------|---|---------------|
| 1 | 2 | Morsetti in alluminio / Aluminium clamps | 50.73.138.1 |
| 2 | 4 | Grani M3 / Grub screws M3 | 50.73.140.1 |
| 3 | 2 | Molla / Spring | 50.73.142.1 |
| 4 | 1 | Tubo di raccordo / Link pipe | 9773Y057C1B |
| 5 | 1 | Tubo di raccordo 2-1 / Link pipe 2-1 | 9773Y050C1A |
| 6 | 2 | Molla media / Middle spring | 50.73.359.1 |
| 7 | 2 | Tubo in gomma per molla / Rubber pipe for spring | 50.73.210.1 |
| 8 | 1 | Dado M8 flangiato / Flanged nut M8 | 50.73.393.1 |
| 9 | 1 | Rondella in alluminio nera / Black aluminium washer | 50.73.221.1 |
| 10 | 1 | Vite M8x40 / Screw M8x40 | 50.73.075.1 |
| 11 | 2 | Tappo per sonda lambda / Stopper for lambda probe | 50.73.111.1 |
| 12 | 2 | Fascetta Ø 52/55 mm / Pipe clamp Ø 52/55 mm | 50.FA.008.1 |

