



EVOTECH®
P E R F O R M A N C E

Installation Instructions

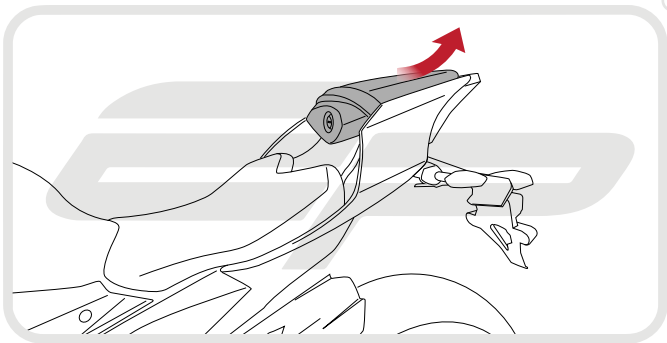


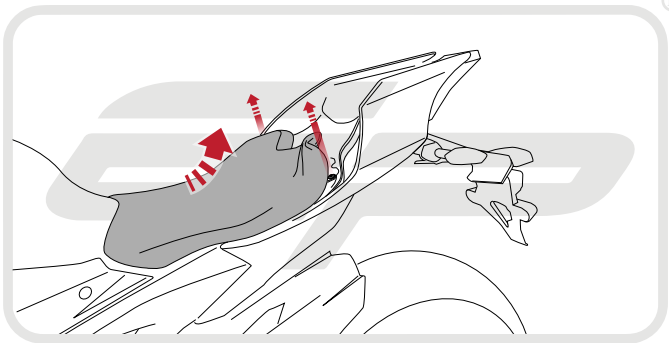
YAMAHA YZF-R1 2015 TAIL TIDY

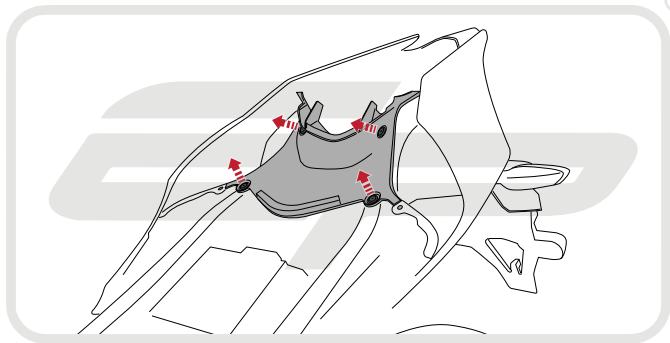
Product Reference - 12265

Kit Contents

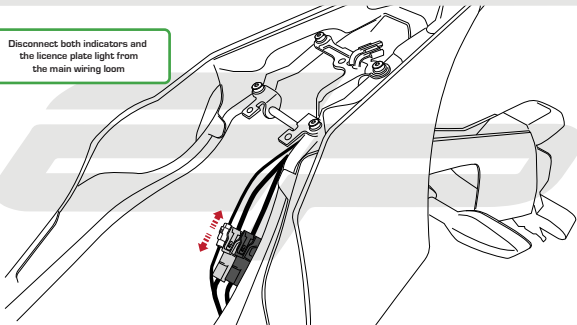
- | | |
|---|--|
| A 1 x Main Arm RH | M 2 x Indicator Adapter B |
| B 1 x Main Arm LH | N 2 x Indicator Screw |
| C 1 x License Plate Holder | O 2 x O-Rings |
| D 1 x Trunion Spacer Plate | P 2 x M6 - 16 Centre Hole Trunion |
| E 1 x Wiring Connector | Q 2 x M6 - 13 Offset Hole Trunion |
| F 1 x Neoprene Gasket | R 2 x M5 - 25 Socket Cap Head Screw |
| G 1 x M6 - 16 Socket Countersink Screw | S 2 x M3 - 12 Button Head Screws |
| H 1 x M5 - 12 Socket Cap Head Screw | T 3 x 5mm - 16mm Dowel pins |
| I 1 x M5 Black Dome Cap | U 3 x M6 - 30 Socket Cap Head Screw |
| J 1 x Reflector Bracket Kit (Plastic Nuts and Bolts, Reflector, Bracket) | V 6 x Male Bullet Connectors |
| K 1 x Licence Plate Light | W 6 x Female Bullet Connectors |
| L 2 x Indicator Adapter A | |

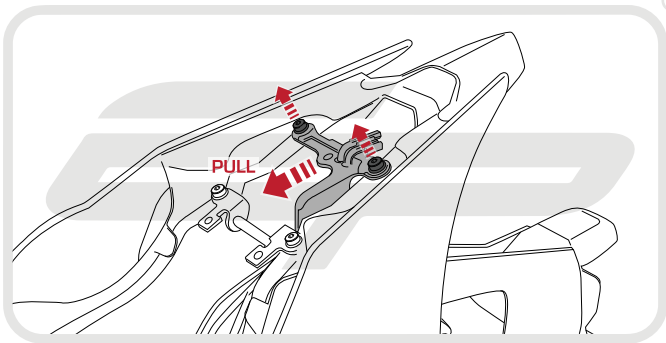


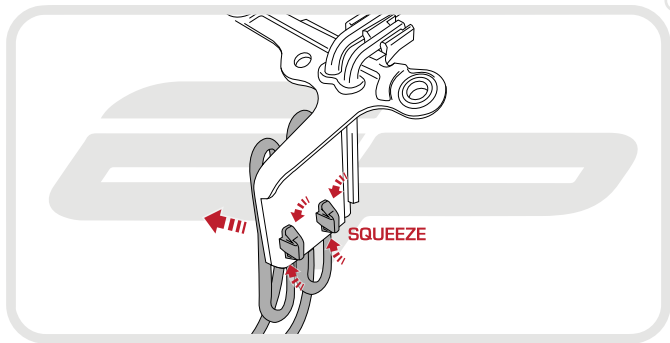


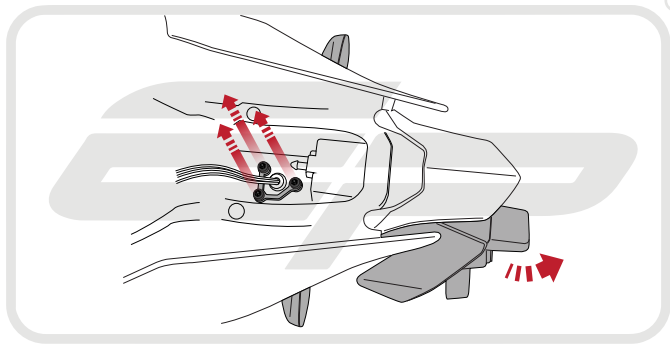


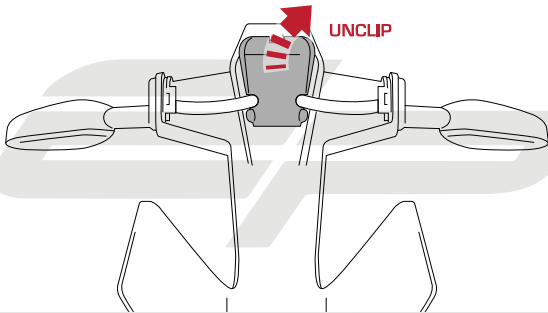
Disconnect both indicators and
the licence plate light from
the main wiring loom

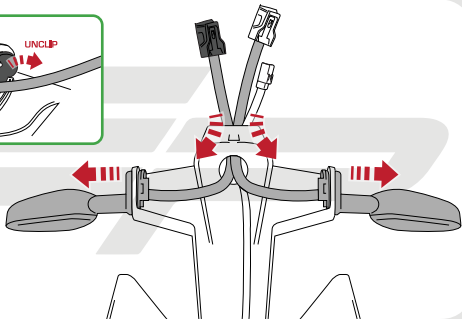
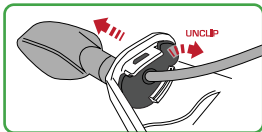




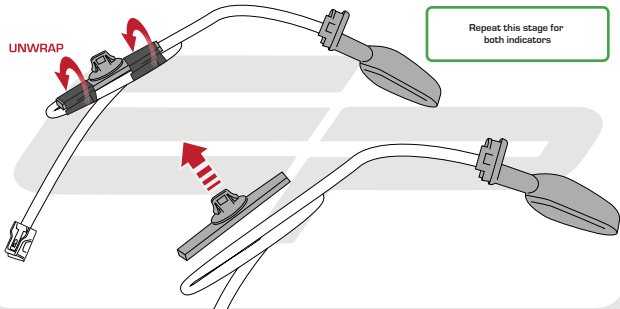


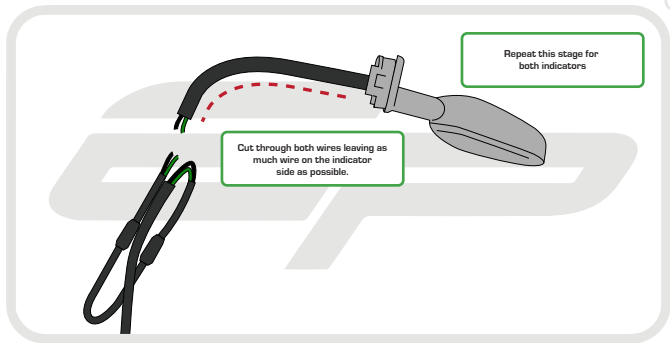


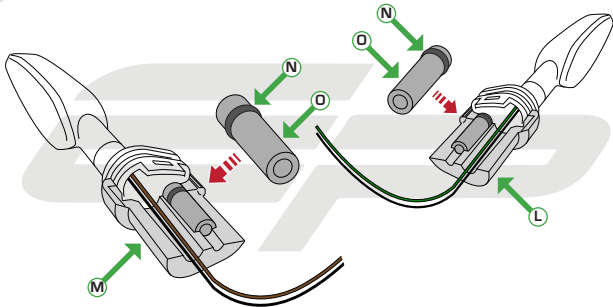


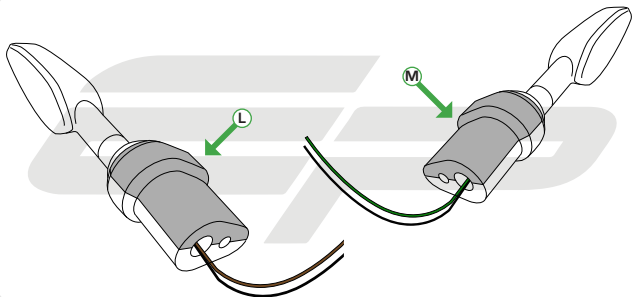


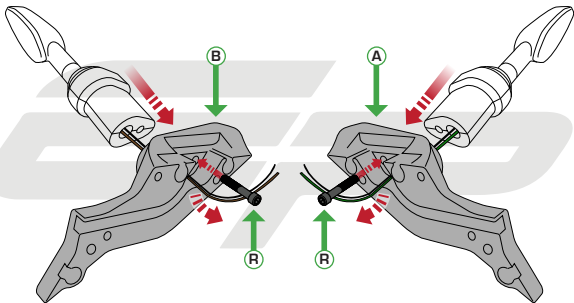
UNWRAP

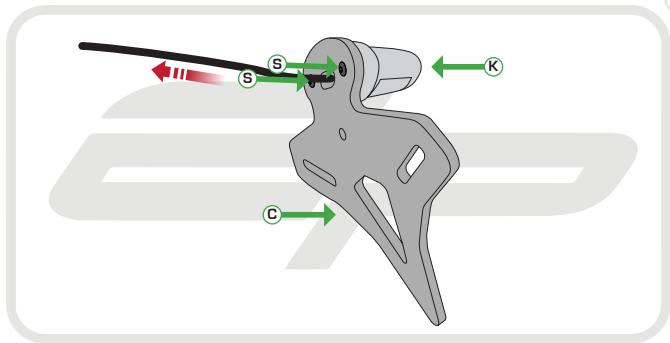


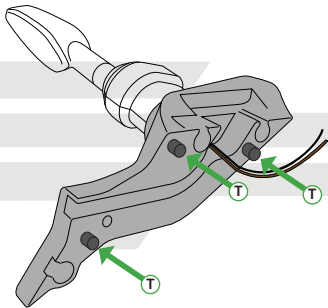


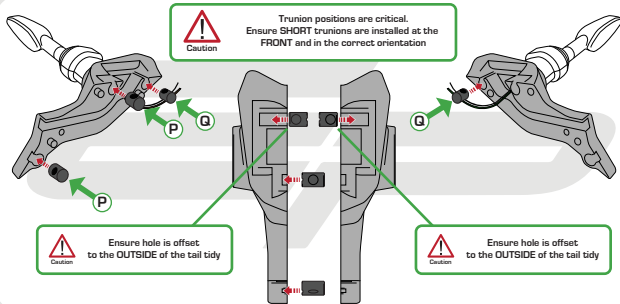


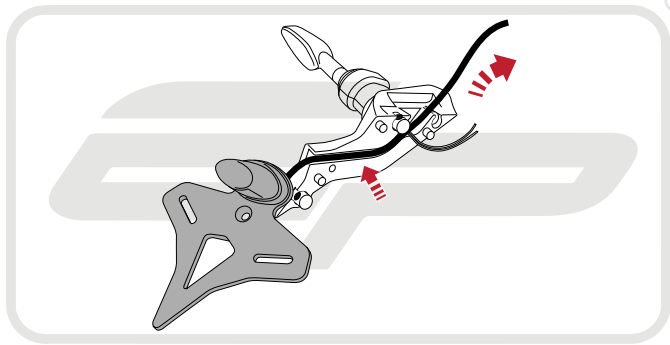


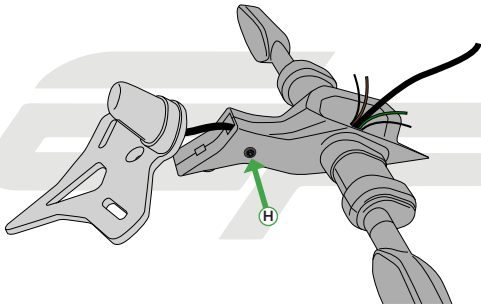


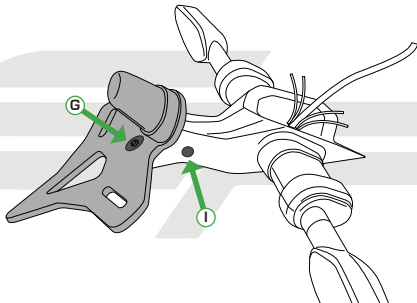




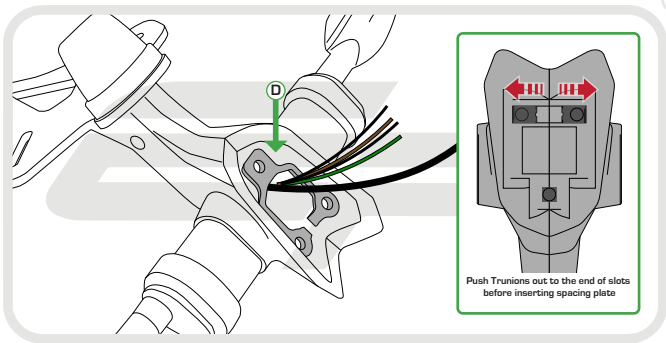


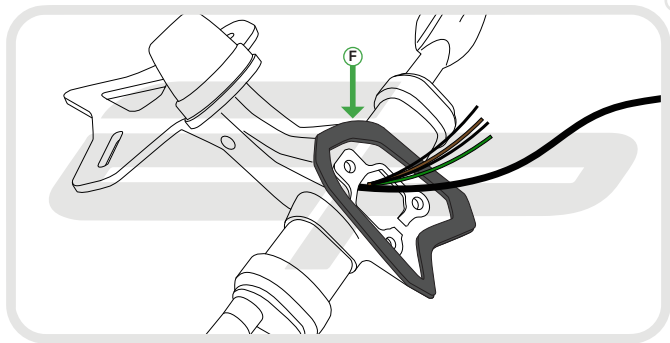




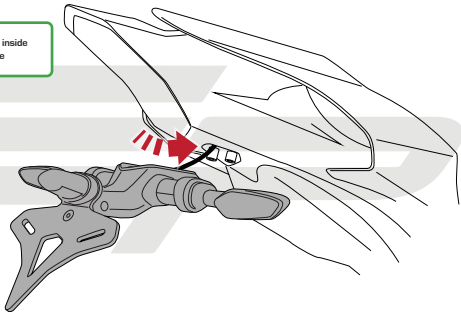


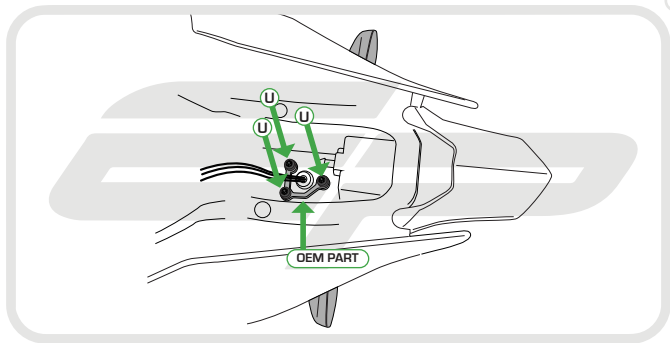
EVOTECH[®]
P E R F O R M A N C E

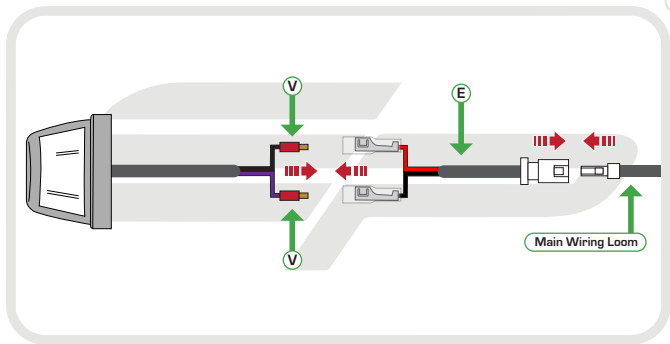


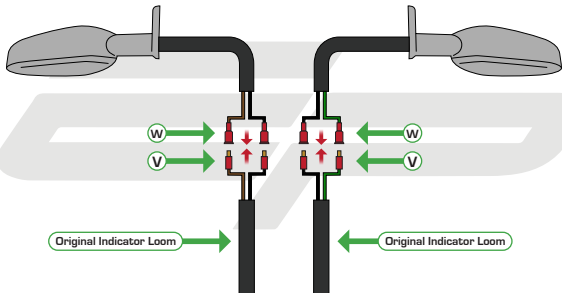


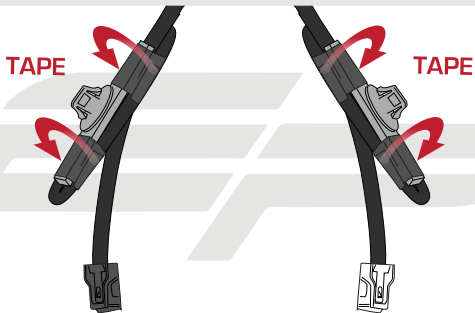
Feed all of the wires up inside
the rear sub frame









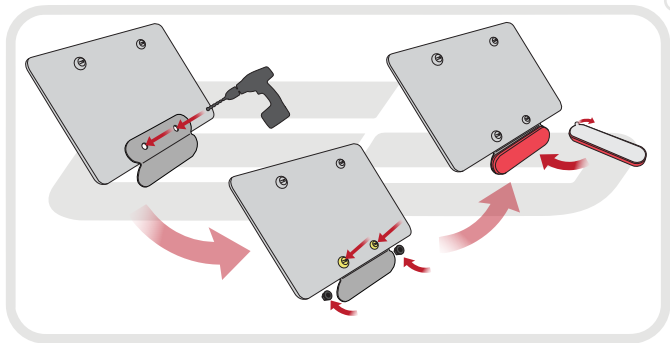




Reverse Stages

6 - 1

Reflector Bracket Installation



EVOTECH[®]
P E R F O R M A N C E



 **ESSENTIAL CHECKS** 

After installation of your tail tidy ensure that the licence plate does not contact the rear tyre when suspension is fully compressed.

Ensure all electrics including indicators, tail light, brake light and licence plate light lights are working correctly before riding the motorcycle.

It is recommended that periodic inspections are made to ensure that all fixings are fully tightend.



EVOTECH[®]
P E R F O R M A N C E

www.evotech-performance.com