



EVOTECH®
P E R F O R M A N C E

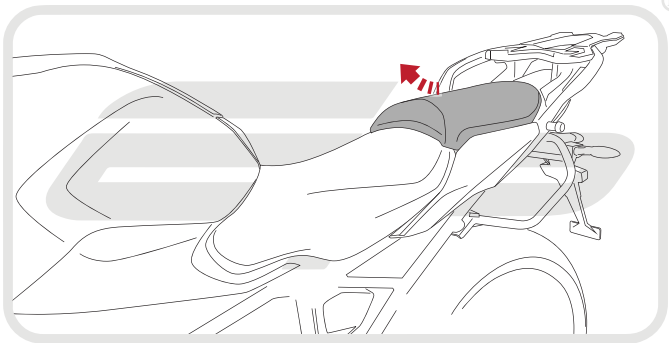
Installation Instructions

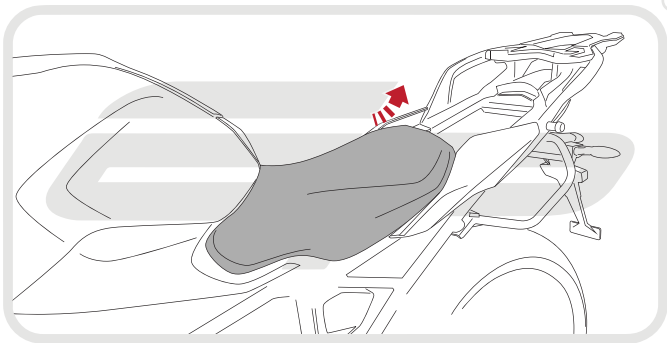
BMW R1200 RS TAIL TIDY

Product Reference - 13202

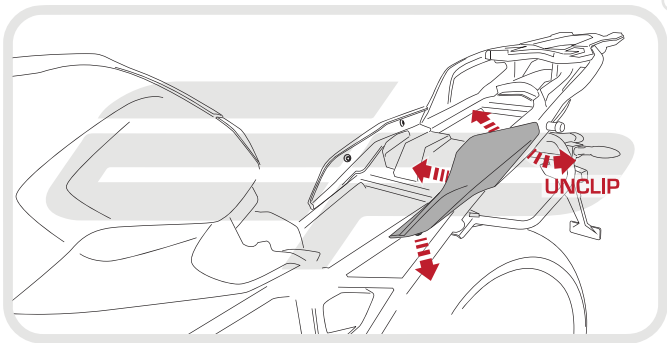
Kit Contents

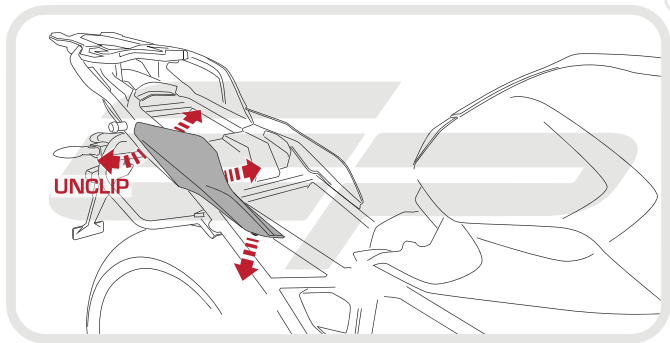
- | | |
|--|---|
| A 1 x Mounting Bracket | J 2 x Plastic Screws and Nuts |
| B 1 x Licence Plate Bracket A (Panier compatible) | K 2 x M6 - 20 Button Head Screws |
| C 1 x Licence Plate Bracket B (Non-Panier compatible) | L 2 x M6 Nyloc Nuts |
| D 1 x Light Bracket A (Panier compatible) | M 2 x M6 Washers |
| E 1 x Light Bracket B (Non-Panier compatible) | N 2 x M4 - 10 Button Head Screws |
| F 1 x LED Light Unit | O 2 x M3 - 12 Button Head Screws |
| G 1 x Plastic Undertray | P 2 x Pair of Bullet Connectors |
| H 1 x Reflector and Bracket | Q 3 x M5 - 12 Button Head Screws |
| I 2 x M6 Top Hat Washers | R 5 x Cable Ties |

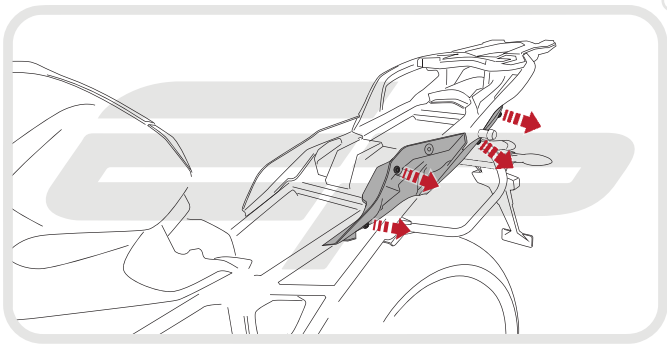


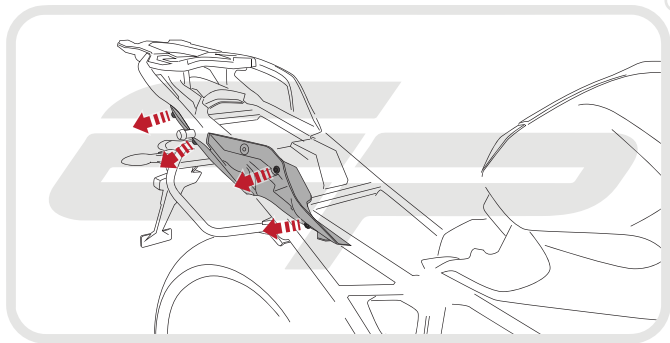


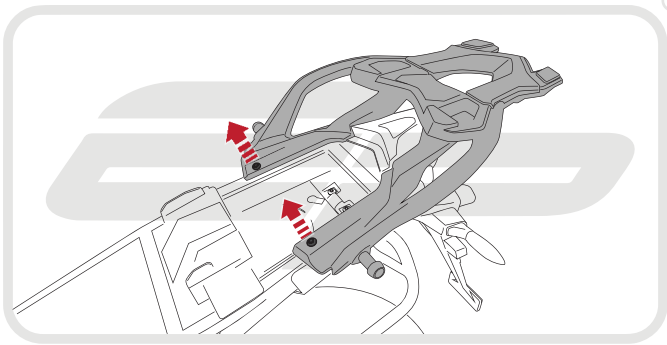
EVOTECH[®]
P E R F O R M A N C E

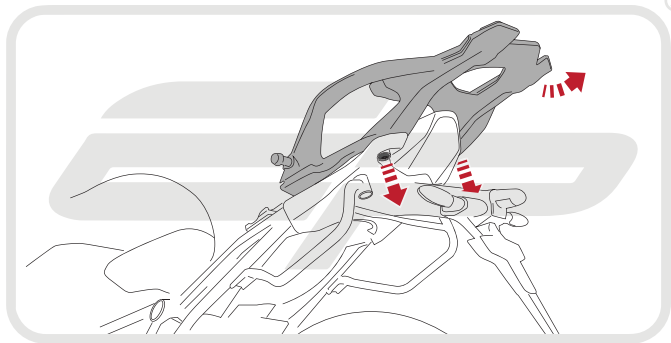








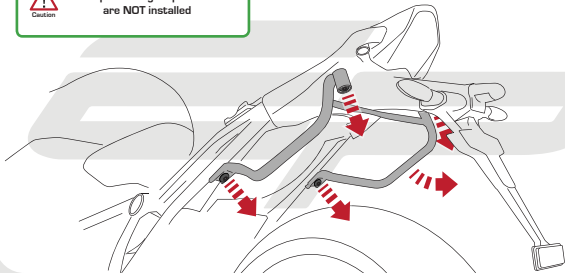


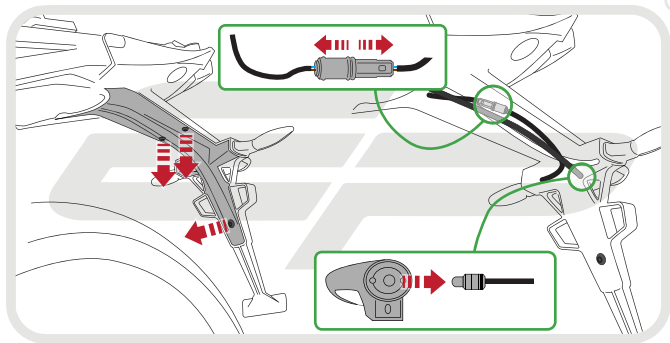


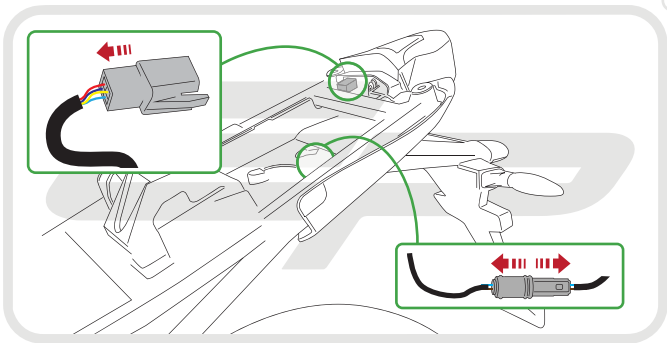


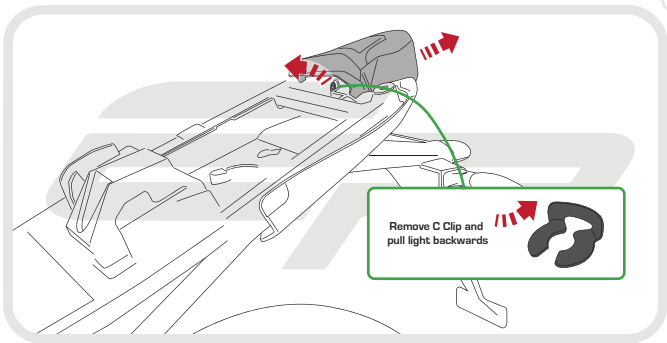
Caution

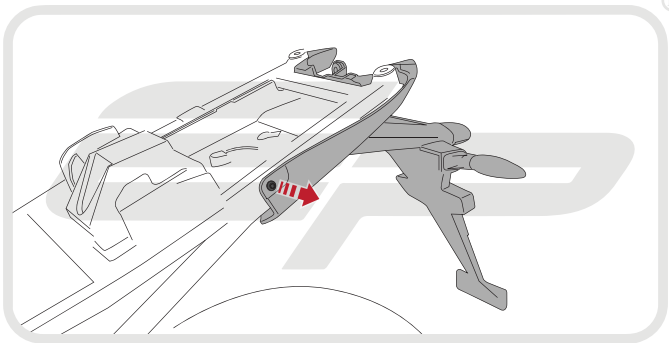
Skip this stage if paniers
are NOT installed

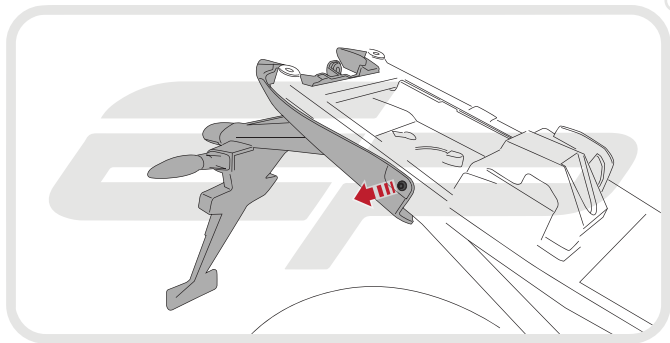


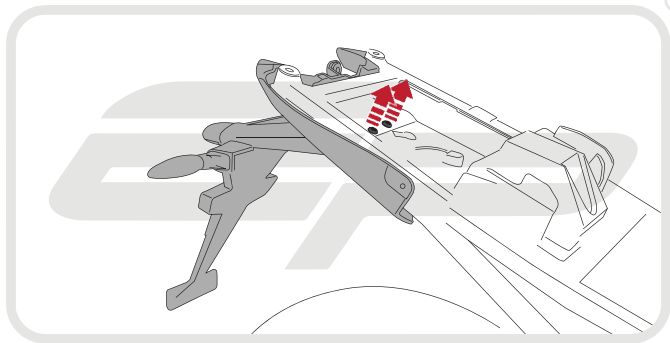






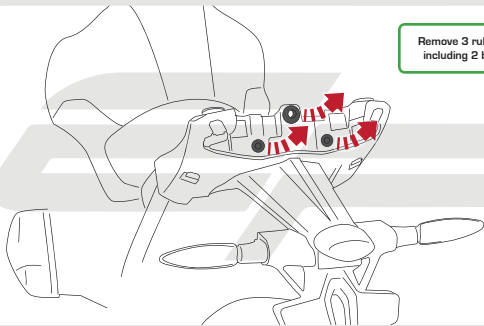


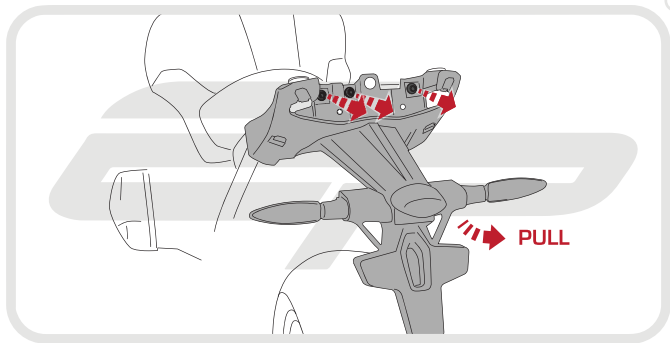


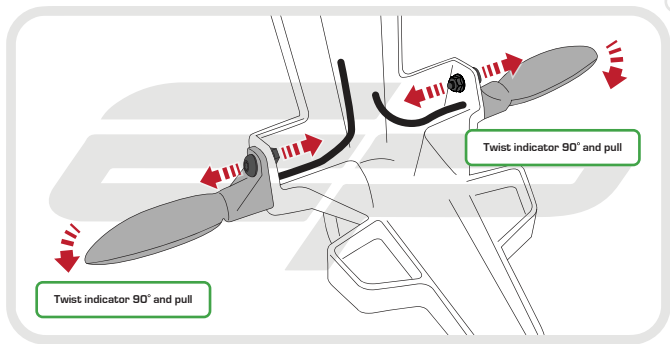


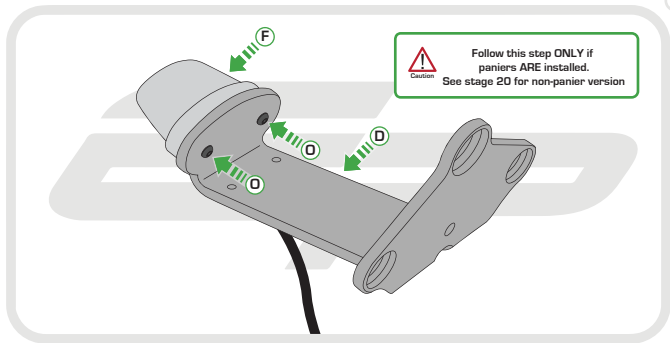


Remove 3 rubber grommets
including 2 brass washers







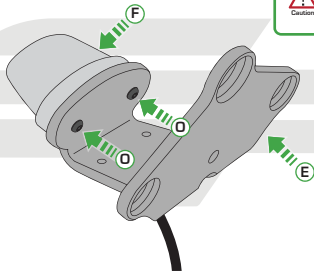


Caution

Follow this step **ONLY** if
paniers **ARE** installed.
See stage 20 for non-panier version



Follow this step **ONLY** if
paniers **ARE NOT** installed





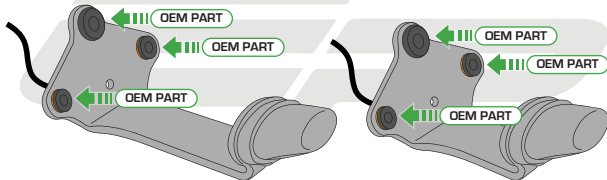
Caution

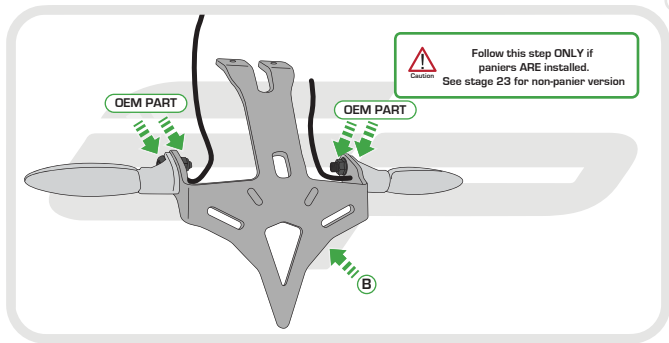
Push rubber grommets through in direction shown

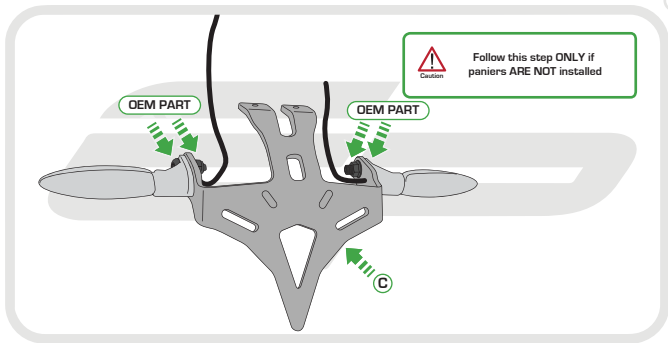


Caution

Follow this step for both panier and non-panier versions



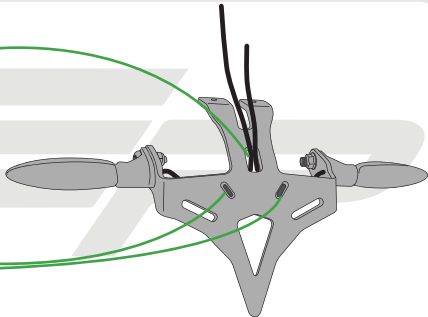


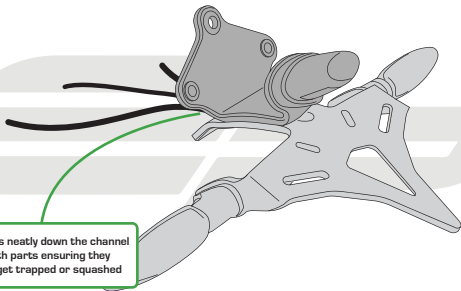


Feed wires through
slot in tail tidy



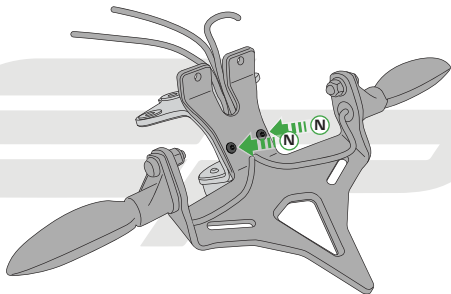
Feed cable tie through tail tidy
so the head sits inside the
slot on the outer face



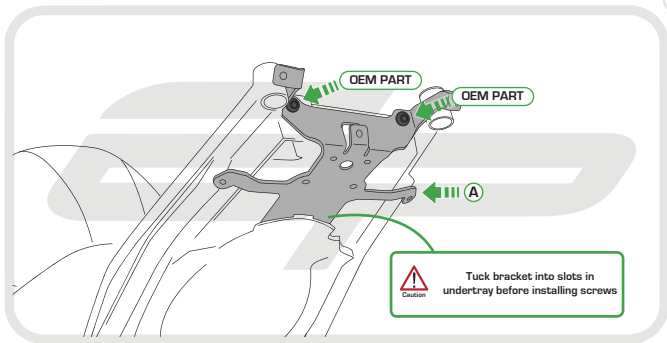


Caution

Run wires neatly down the channel
in both parts ensuring they
do not get trapped or squashed

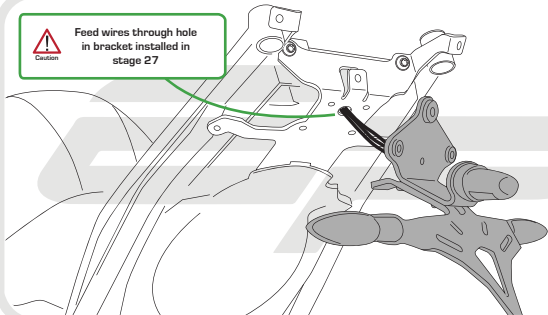


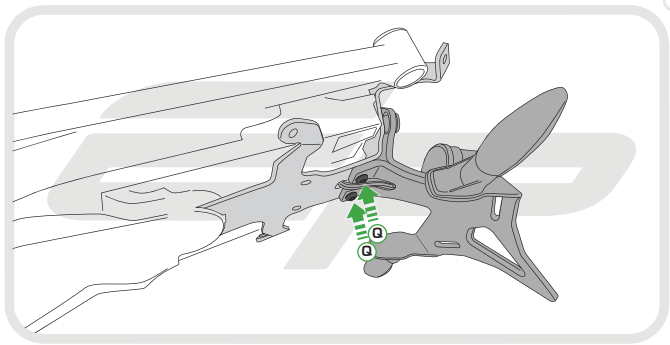
EVOTECH[®]
P E R F O R M A N C E

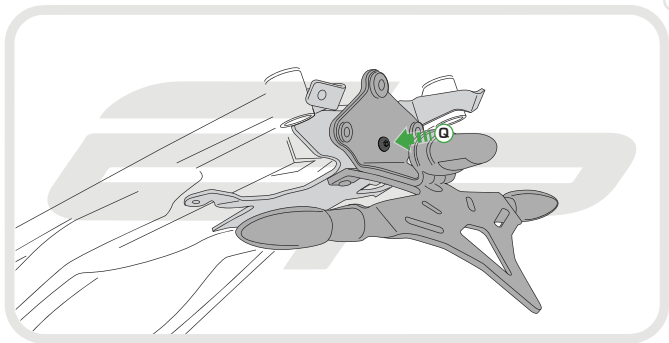


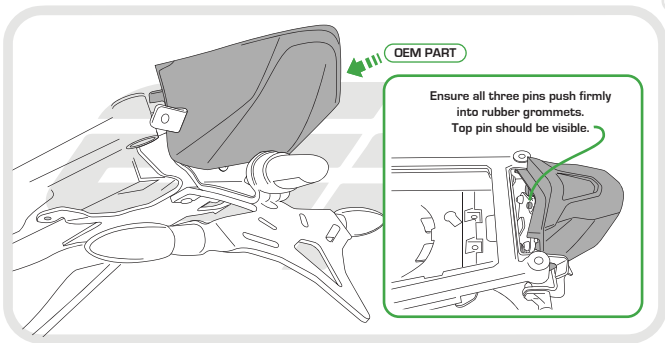


Feed wires through hole
in bracket installed in
stage 27



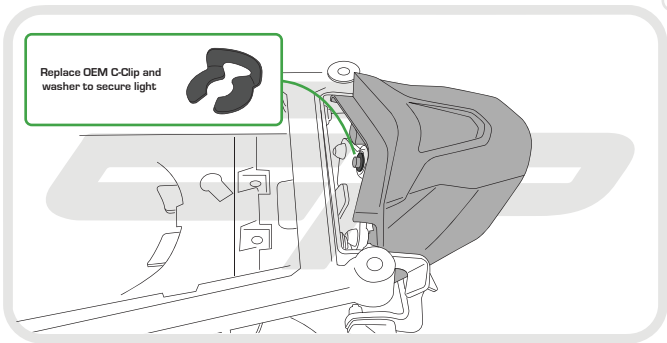






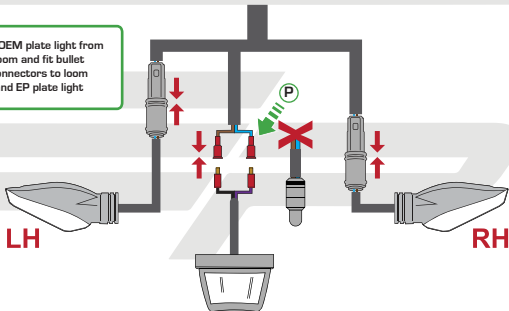


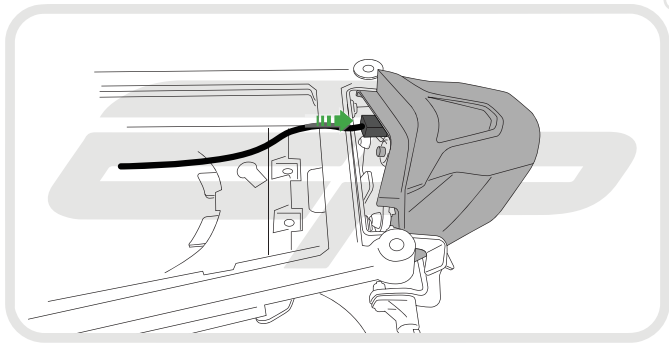
Replace OEM C-Clip and washer to secure light





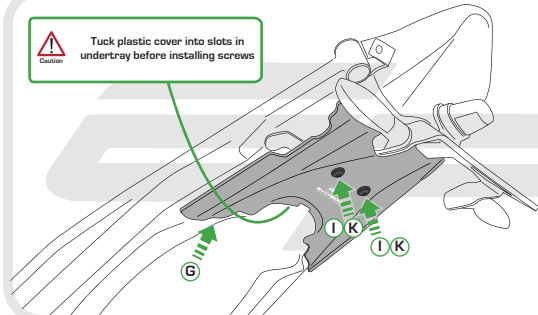
Cut OEM plate light from loom and fit bullet connectors to loom and EP plate light

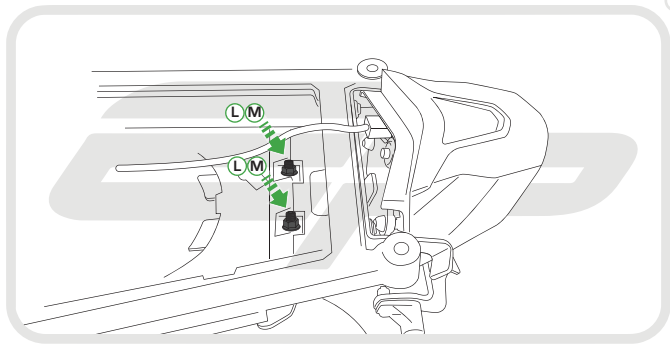






Tuck plastic cover into slots in undertray before installing screws





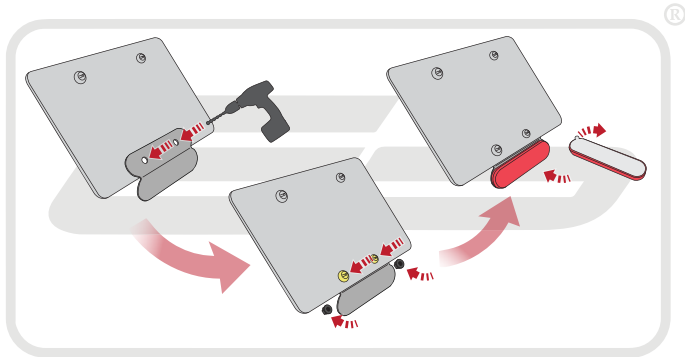
EVOTECH[®]
P E R F O R M A N C E



Reverse Stages

9 - 1

Reflector Bracket Installation



EVOTECH[®]
P E R F O R M A N C E



ESSENTIAL CHECKS



After installation of your tail tidy ensure that the licence plate does not contact the rear tyre when suspension is fully compressed.

Ensure all electrics including indicators, tail light, brake light and licence plate light lights are working correctly before riding the motorcycle.

It is recommended that periodic inspections are made to ensure that all fixings are fully tightend.



EVOTECH®
P E R F O R M A N C E

www.evotech-performance.com