



EVOTECH®
P E R F O R M A N C E

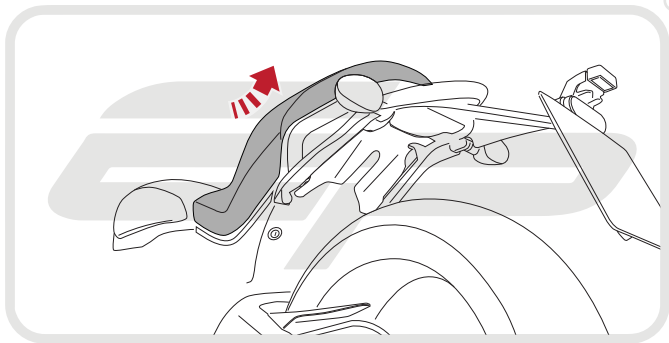
**Ducati Desert Sled
Tail Tidy**

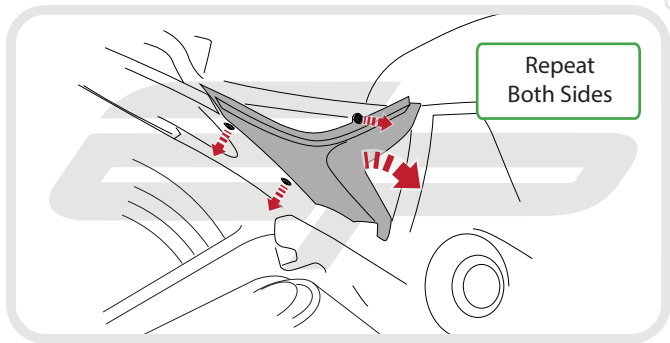
Installation Instructions

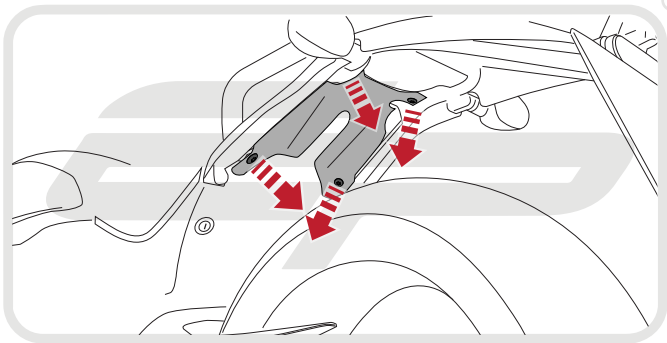


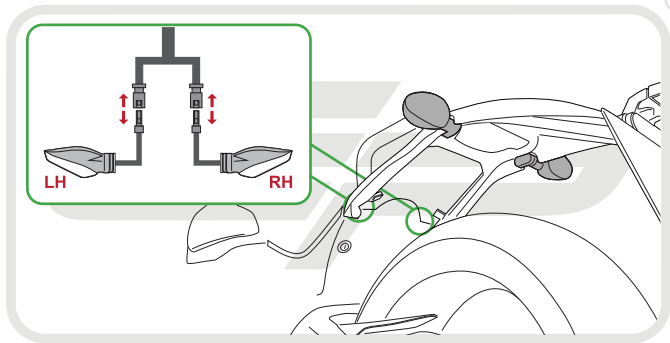
Kit Contents

- A** 1 x Main Bracket
- B** 1 x Number Plate Bracket
- C** 1 x Light Spacer
- D** 1 x Number Plate Light
- E** 1 x Reflector Kit
- F** 1 x Rear Light Connector
- G** 2 x M5 x 12 Countersunk Screws
- H** 2 x Side Mounting Brackets



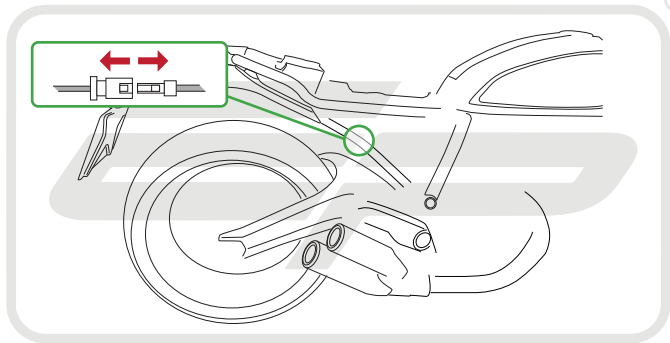




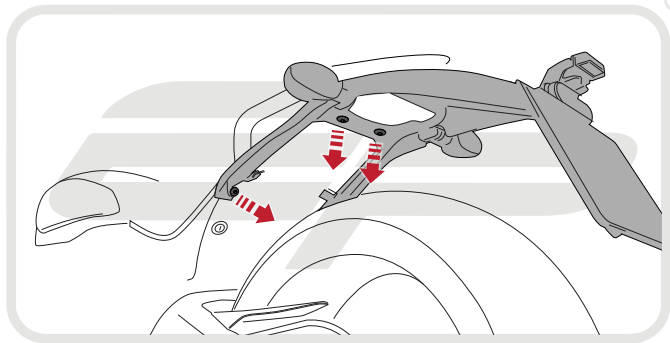




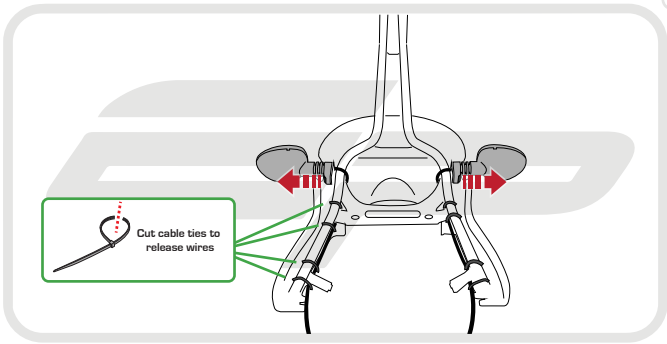
®



EVOTECH[®]
P E R F O R M A N C E



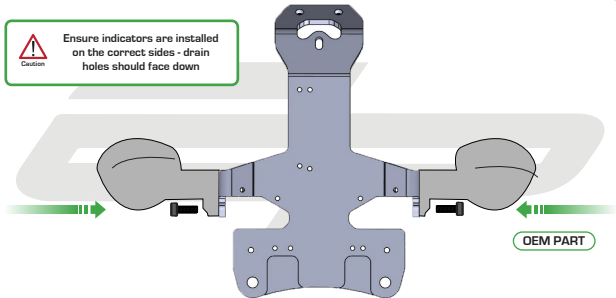
EVOTECH[®]
P E R F O R M A N C E

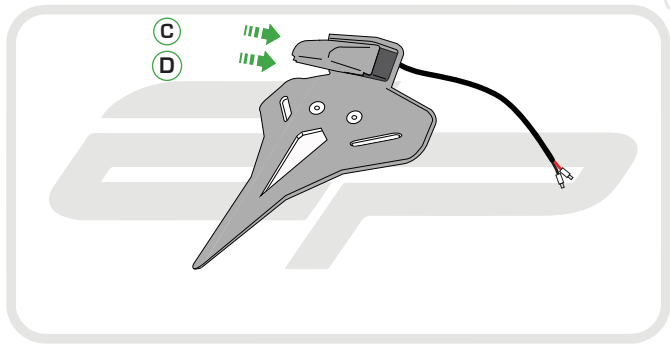




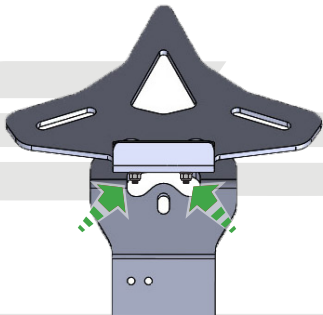
Caution

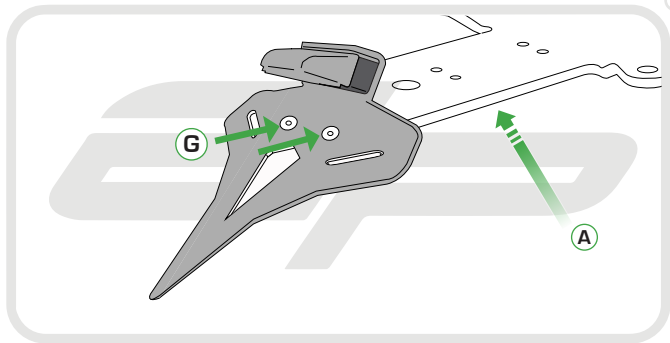
Ensure indicators are installed
on the correct sides - drain
holes should face down

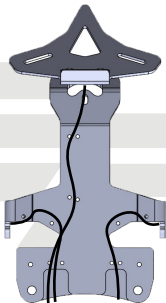
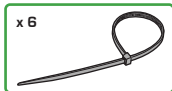
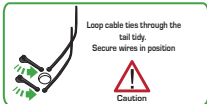


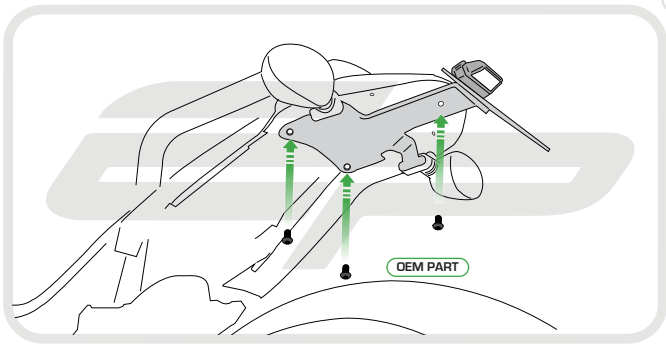


EVOTECH[®]
P E R F O R M A N C E





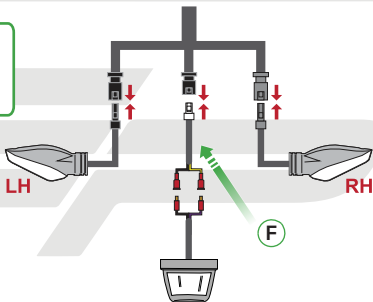


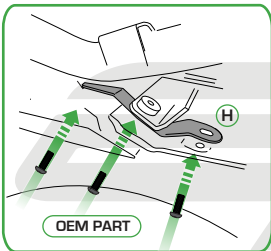




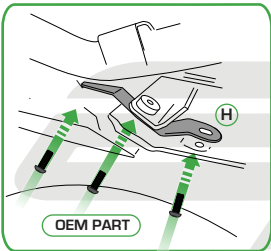
Caution

Run wires neatly down the right hand side of the bike. As shown in stage 12 ensuring they do not get trapped or squashed





The bracket fits
between frame
and plastic
undertray



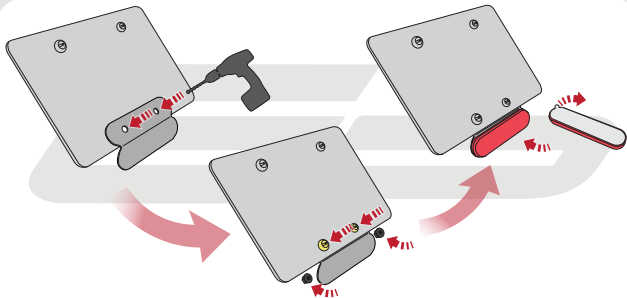
Repeat on both sides.



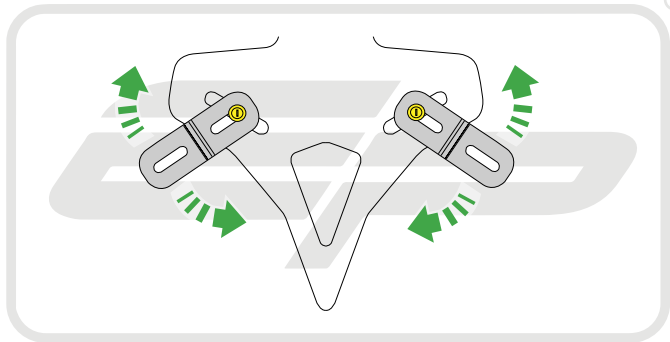
Reverse Stage

4,3

Reflector Bracket Installation



EVOTECH[®]
P E R F O R M A N C E





EVOTECH®
P E R F O R M A N C E

www.evotech-performance.com



 **ESSENTIAL CHECKS** 

After installation of your tail tidy ensure that the licence plate does not contact the rear tyre when suspension is fully compressed.

Ensure all electrics including indicators, tail light, brake light and licence plate light lights are working correctly before riding the motorcycle.

It is recommended that periodic inspections are made to ensure that all fixings are fully tightend.