



EVOTECH®
P E R F O R M A N C E

www.evotech-performance.com

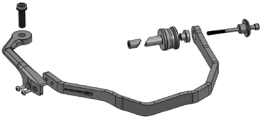
Ducati Multistrada Hand Guards

Installation Instructions



Kit Contents P114014654

- 1 x Main Bracket R/H
- 1 x Mounting Bracket R/H
- 1 x M10 x 35 x 1.25-55 L/H
- 1 x Main Bracket L/H
- 1 x Mounting Bracket L/H
- 1 x M10 x 35 x 1.25-55 R/H
- 2 x Bar End Inner
- 2 x Bar End Outer #1
- 2 x Bar End Outer #2
- 2 x M6 x 75mm 5S Caphead
- 4 x M5 x 12mm Button head



L/H Assembly



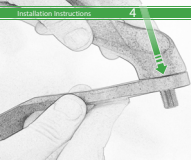
R/H Assembly



**R/H Mirror
L/H Thread**

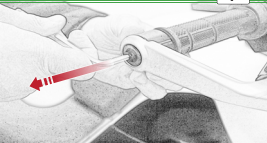


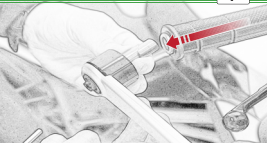




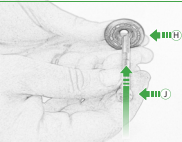


**Do Not Fully
Tighten**

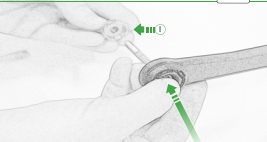




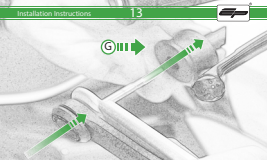








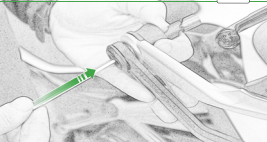


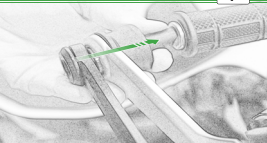




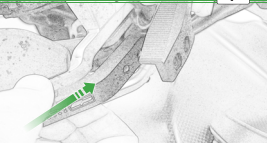
CEM PART

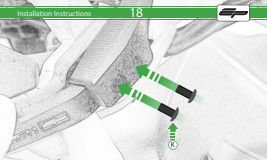






Insert the handle into the hole in the wall.







**Fully
Tighten**



**Fully
Tighten**





Repeat Process
For Left Hand Side
L/H Mirror R/H Thread



EVOTECH®
P E R F O R M A N C E

www.evotech-performance.com