



**EVOTECH**®  
P E R F O R M A N C E

**Installation Instructions**

## APRILIA TUONO V4 CRASH PROTECTION

Product Reference - 12448

### Kit Contents

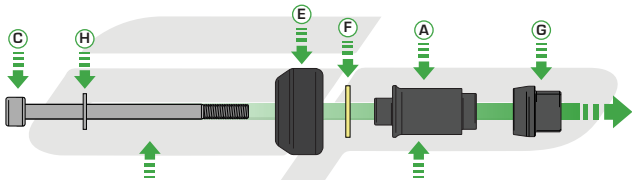
- |                                      |  |
|--------------------------------------|--|
| <b>A</b> 1 x RH Bobbin Spacer        | <b>E</b> 2 x Bobbin Heads              |
| <b>B</b> 1 x LH Bobbin Spacer        | <b>F</b> 2 x Impact Absorbtion Washers |
| <b>C</b> 1 x M10 - 160 Cap Head Bolt | <b>G</b> 2 x Frame Spacers             |
| <b>D</b> 1 x M10 - 140 Cap Head Bolt | <b>H</b> 2 x M10 Washers               |



Caution

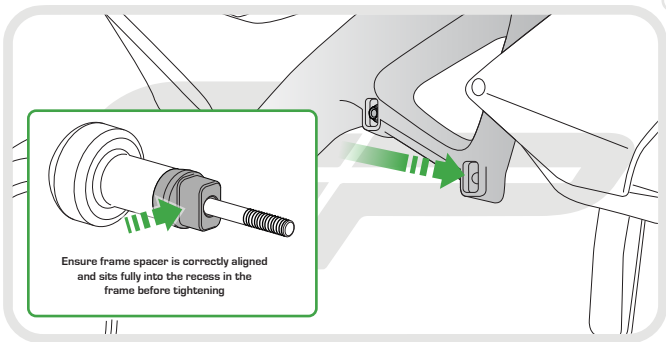
Only remove engine bolts  
from one side at a time

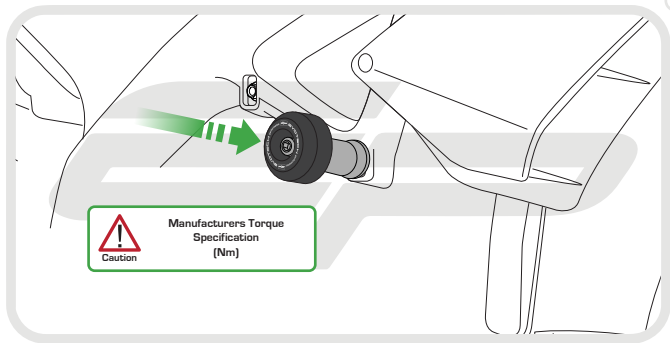


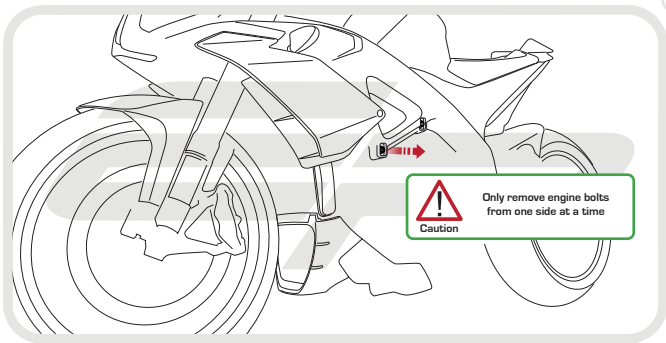


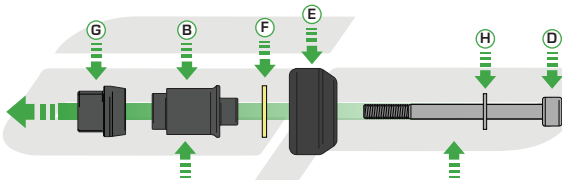
Caution

Ensure M10 - 160 Cap Head Bolt  
and Longest Bobbin Spacer is used





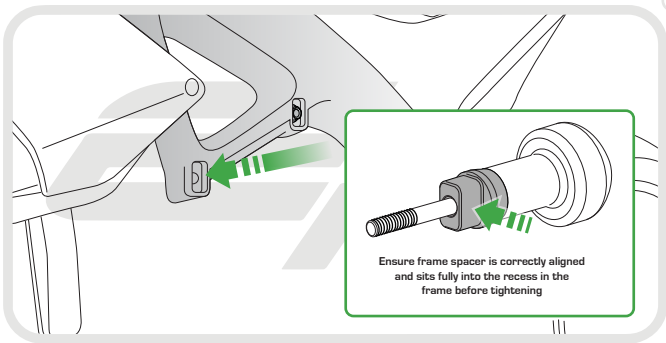


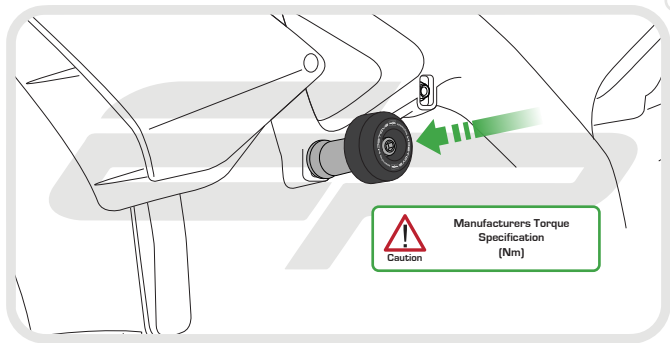


Caution

Ensure M10 - 140 Cap Head Bolt  
and Shortest Bobbin Spacer is used









 **ESSENTIAL CHECKS** 

It is recommended that periodic inspections are made to ensure that all bolts are tightened to the specified torque settings.

Should the bike be involved in an accident a thorough inspection should be made and any components that have taken an impact, no matter how small, be replaced



**EVOTECH**®  
P E R F O R M A N C E

[www.evotech-performance.com](http://www.evotech-performance.com)