



EVOTECH®
P E R F O R M A N C E

Installation Instructions

WK 650i 2013
CRASH PROTECTION

Product Reference - 12596

Kit Contents

- | | |
|--|-------------------------------------|
| A 1 x RH Bobbin Spacer | F 1 x M8 Black Washer |
| B 1 x LH Bracket Spacer | G 2 x Bobbin Heads |
| C 1 x LH Bobbin Spacer | H 2 x M10 - 155 x 1.25 Bolts |
| D 1 x LH Frame Bracket | I 2 x M10 Washers |
| E 1 x M8 - 25 Black Button Head Screw | |



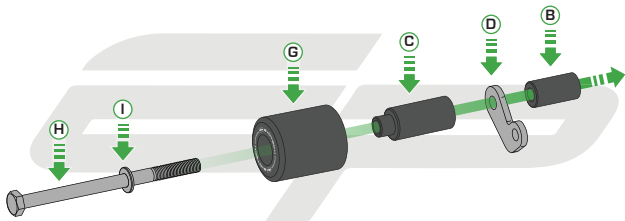
Caution

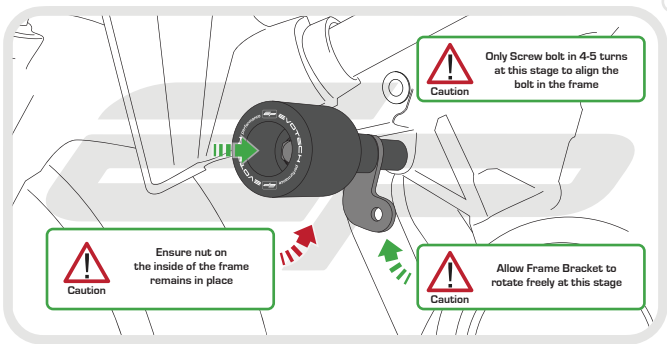
Only remove engine bolts
from one side at a time

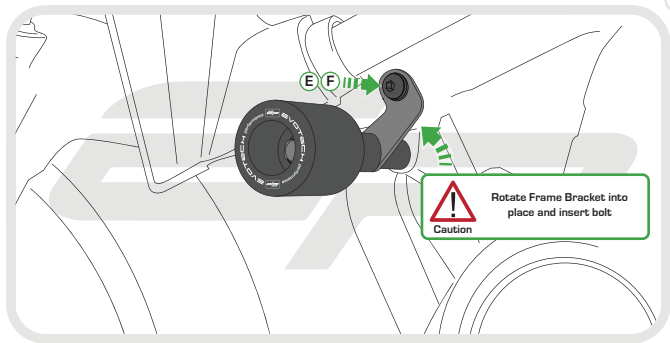


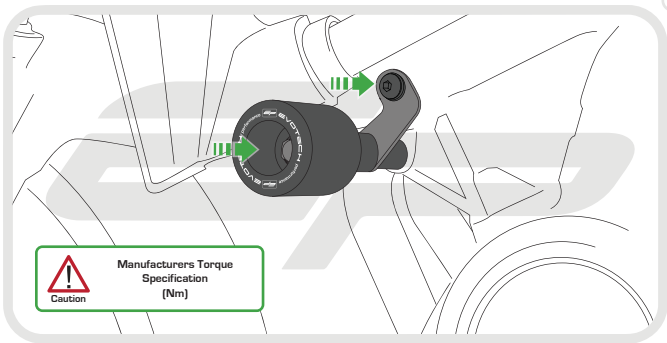
Caution

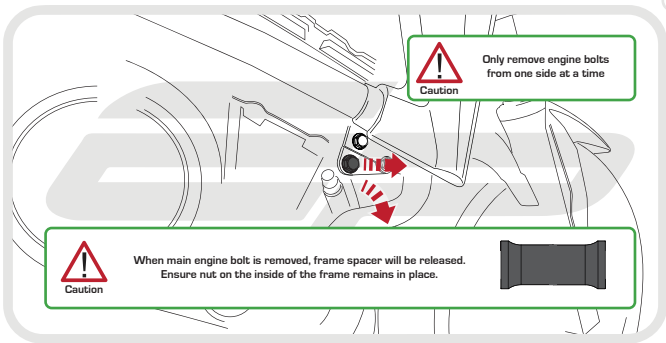
When main engine bolt is
removed, ensure nut on
the inside of the frame
remains in place











Caution

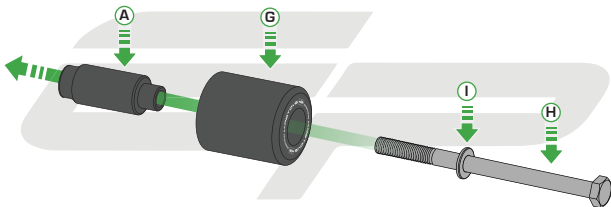
Only remove engine bolts
from one side at a time



Caution

When main engine bolt is removed, frame spacer will be released.
Ensure nut on the inside of the frame remains in place.

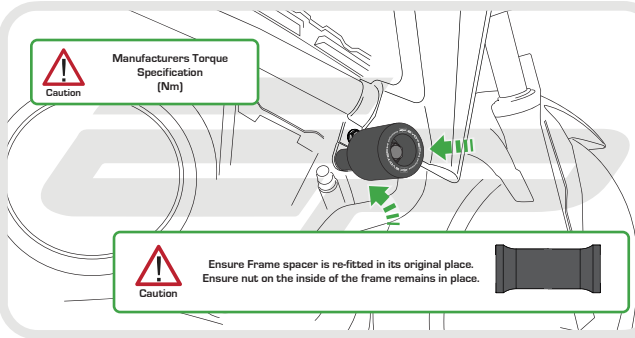






Caution

Manufacturers Torque
Specification
(Nm)



Caution

Ensure Frame spacer is re-fitted in its original place.
Ensure nut on the inside of the frame remains in place.





ESSENTIAL CHECKS



It is recommended that periodic inspections are made to ensure that all bolts are tightened to the specified torque settings.

Should the bike be involved in an accident a thorough inspection should be made and any components that have taken an impact, no matter how small, be replaced



EVOTECH®
P E R F O R M A N C E

www.evotech-performance.com