



EVOTECH®
P E R F O R M A N C E

Installation Instructions



KTM 1190 ADVENTURE and ADVENTURE R RADIATOR GUARD

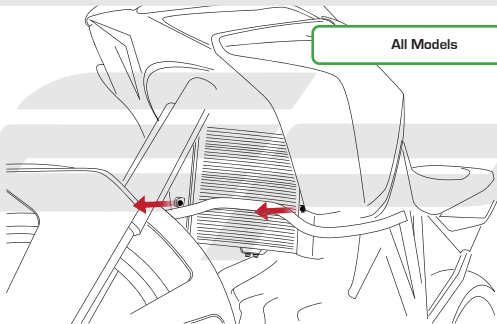
Product Reference - 11841

Kit Contents

- Ⓐ 1 x Radiator Guard
- Ⓑ 1 x Neoprene Foam
- Ⓒ 1 x Hose Mounting Bracket
- Ⓓ 2 x M5-10 Socket Button Head Screws
- Ⓔ 2 x M5 Washers

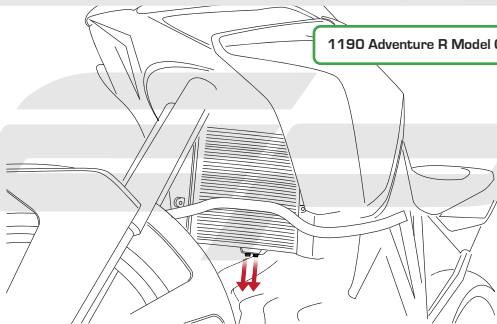


All Models



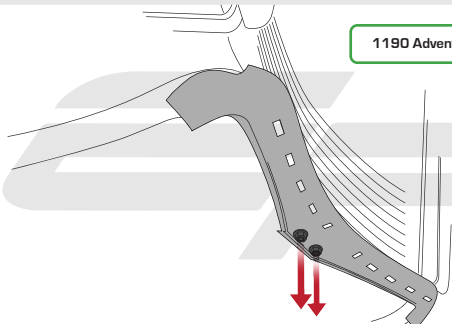


1190 Adventure R Model Only





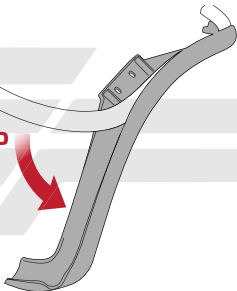
1190 Adventure Model Only

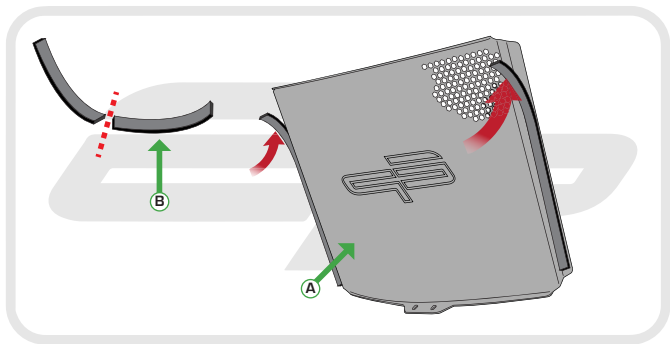




1190 Adventure Model Only

UNCLIP



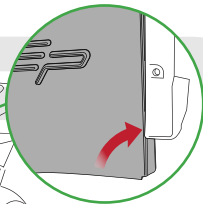




Caution

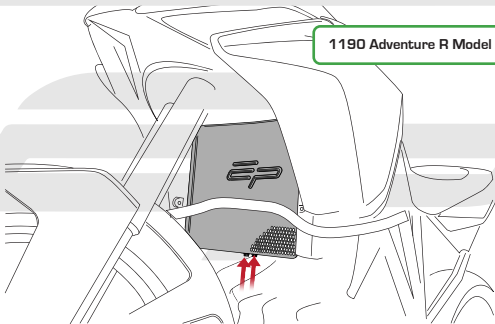
Ensure the Radiator Guard fits on top of the radiator and tucks behind the fairing

All Models



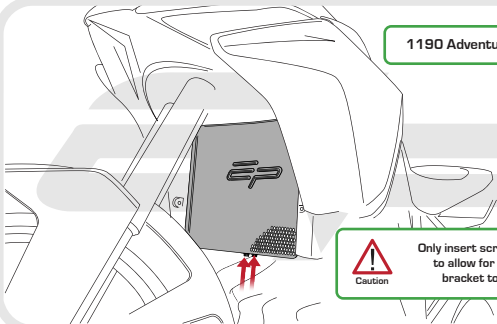


1190 Adventure R Model Only



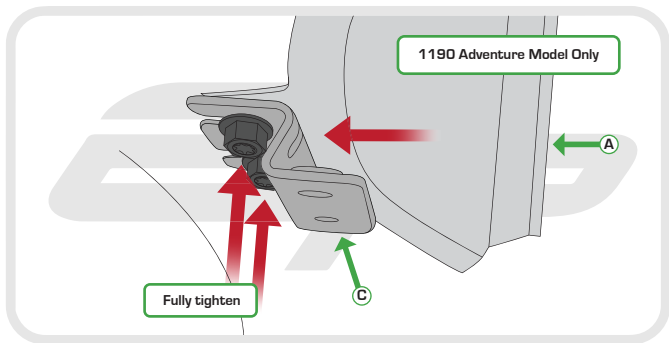


1190 Adventure Model Only



Caution

Only insert screws 3 turns
to allow for the hose
bracket to slide in





1190 Adventure Model Only

RE-FIT

A diagram showing a grey seat cover being fitted onto a seat. A red curved arrow points from the text 'RE-FIT' to the seat cover. A white box with a green border contains the text '1190 Adventure Model Only' with lines pointing to the seat cover. The background features a large, faint 'EP' logo.

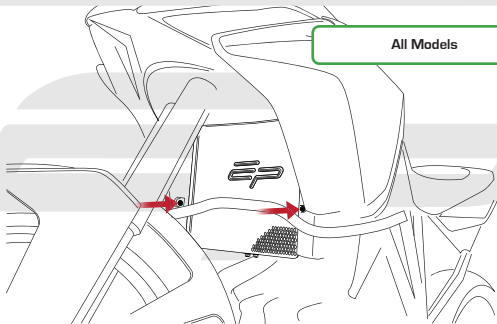
EVOTECH[®]
P E R F O R M A N C E

1190 Adventure Model Only

D,E
D,E



All Models





Maintenance

It is recommended that periodic inspections are made to ensure that dirt and debris have not become trapped between the guard and the radiator/oil cooler. Such dirt and debris would reduce the cooling efficiency of the radiator/oil cooler



EVOTECH®
P E R F O R M A N C E

www.evotech-performance.com