

**EVOTECH**®  
P E R F O R M A N C E

[www.evotech-performance.com](http://www.evotech-performance.com)

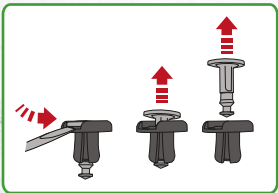
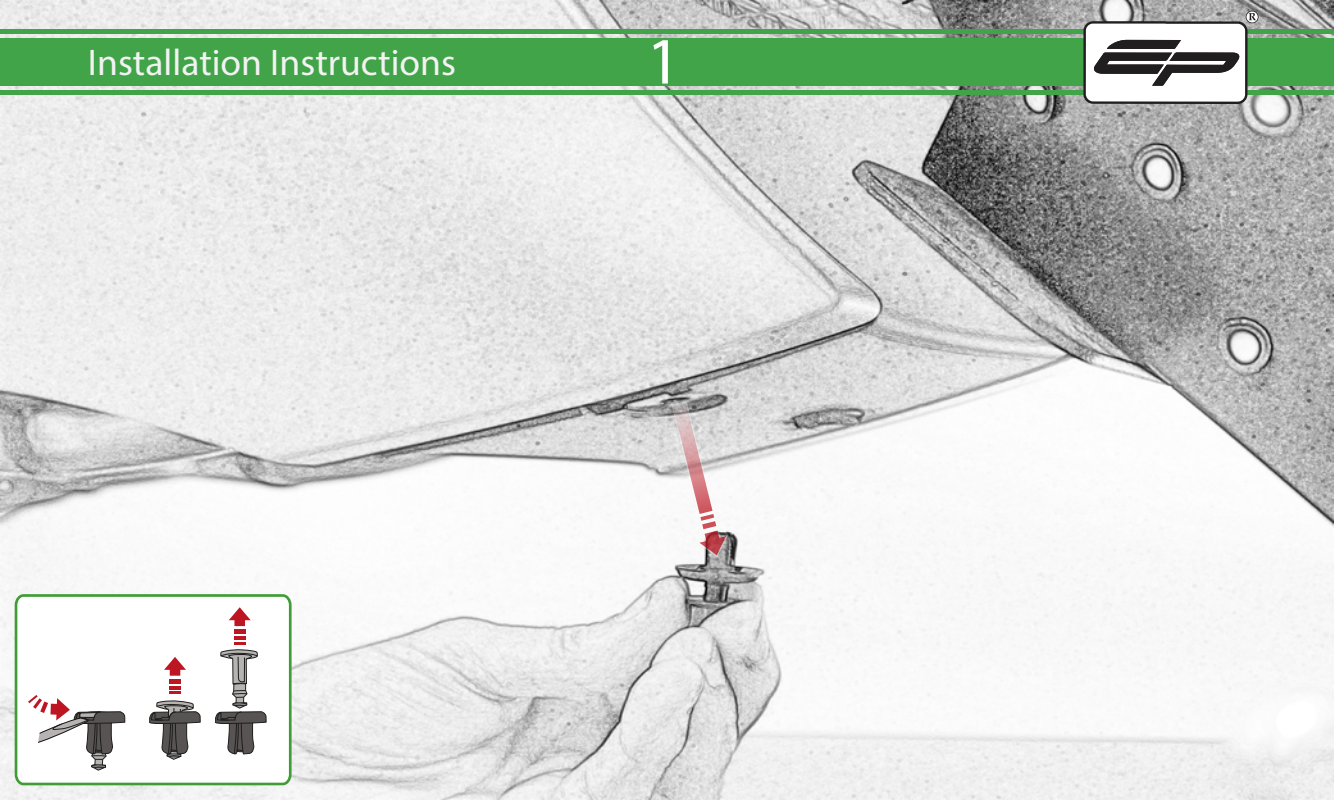
Suzuki Hayabusa

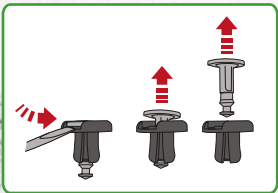
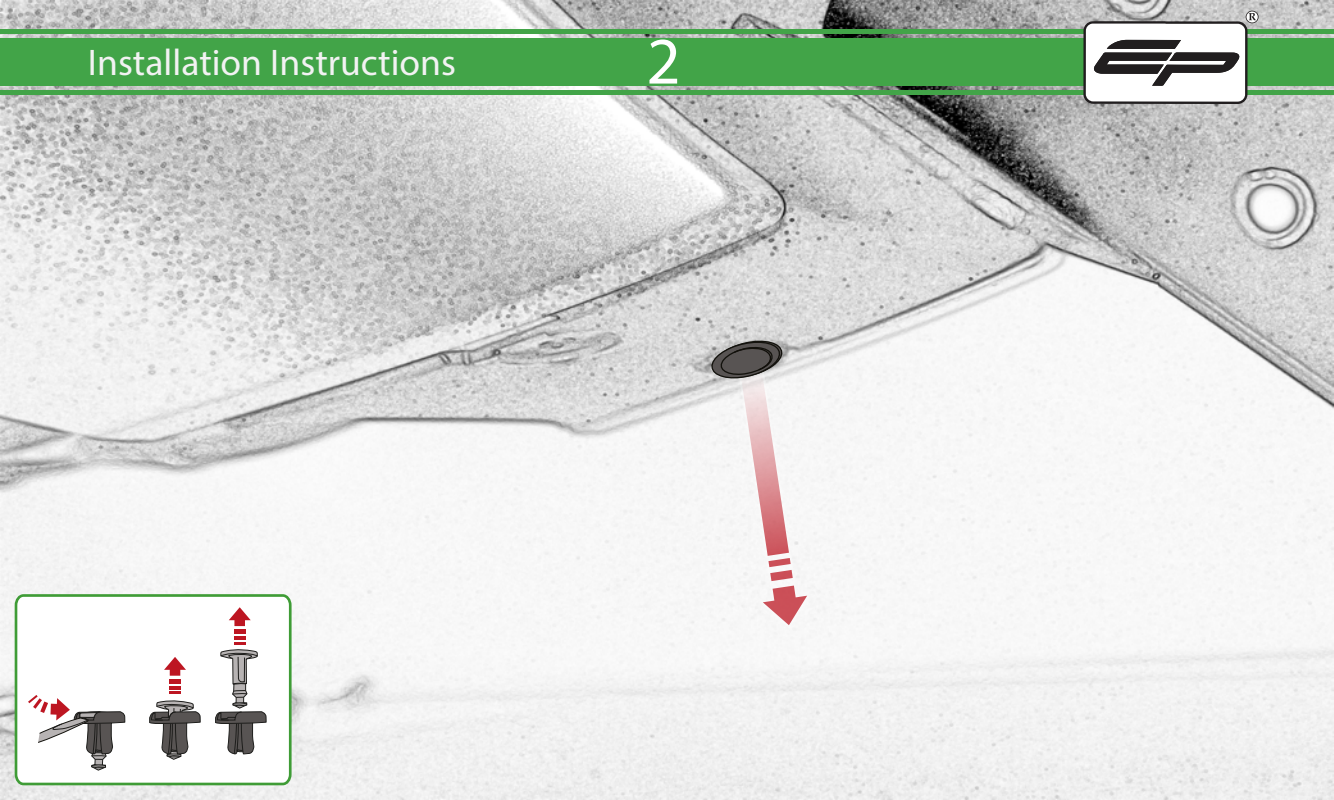
Radiator Guard Installation Instruction



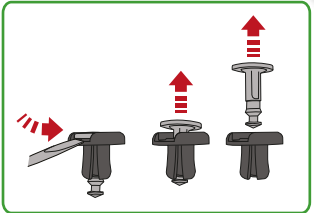
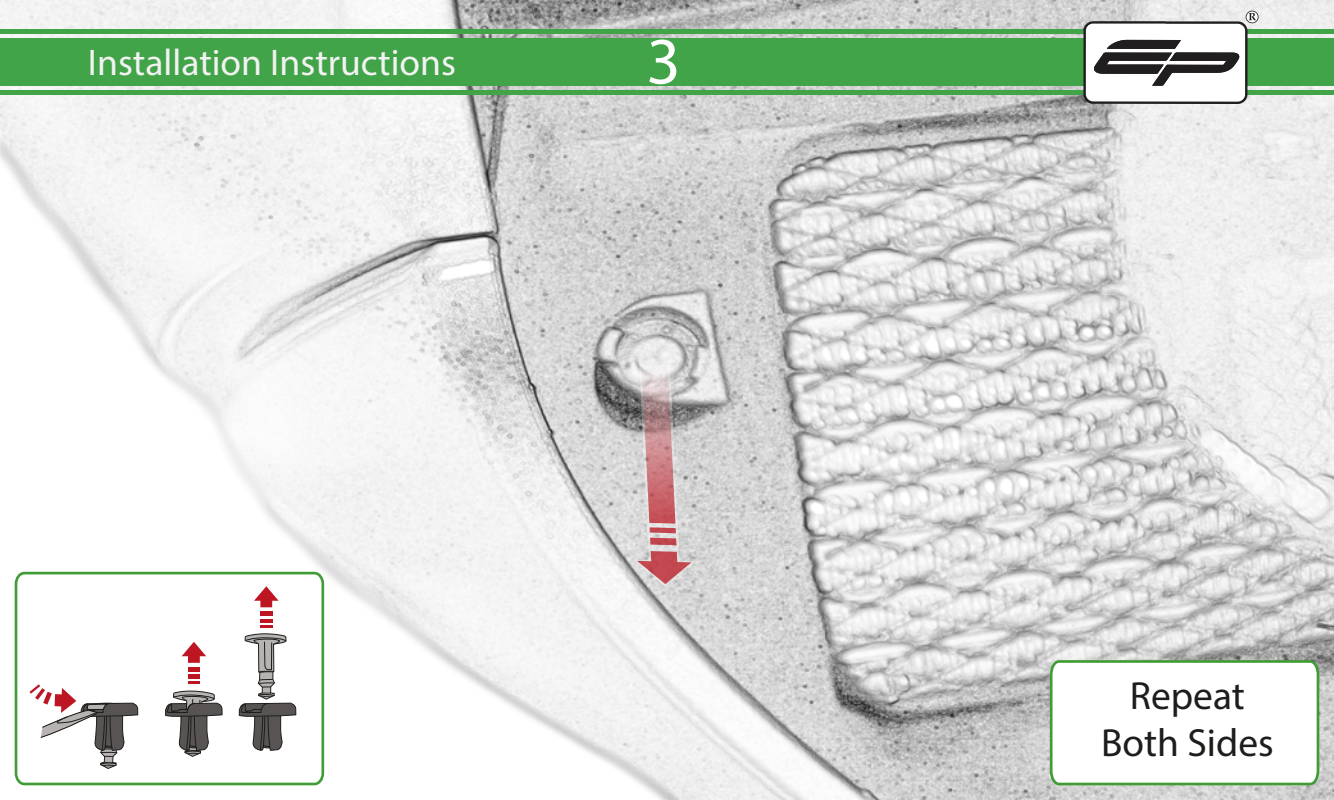
- Ⓐ 1 x Radiator Guard
- Ⓑ 1 x Oil Cooler Guard
- Ⓒ 2 x M5 x 8mm Black Button Heads
- Ⓓ 2 x Rubber Pad
- Ⓔ 12 x Rubber Bungs

**EVOTECH**®  
P E R F O R M A N C E

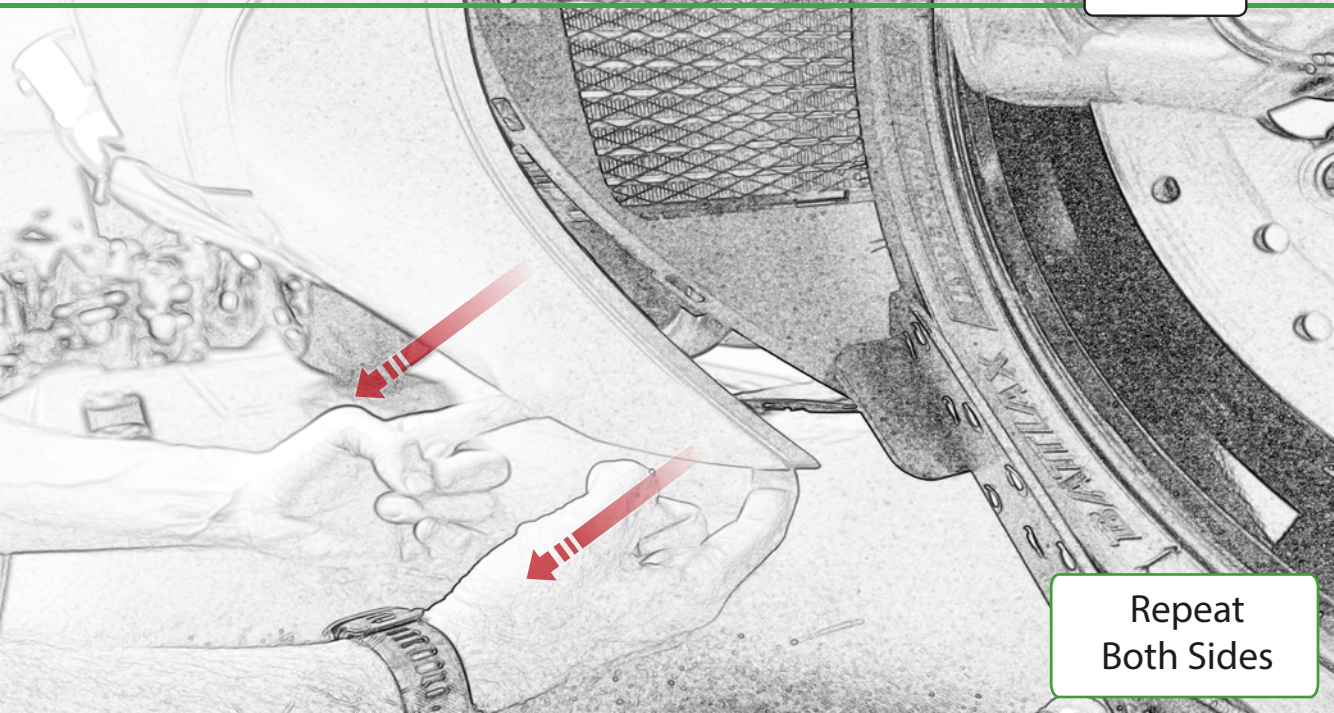




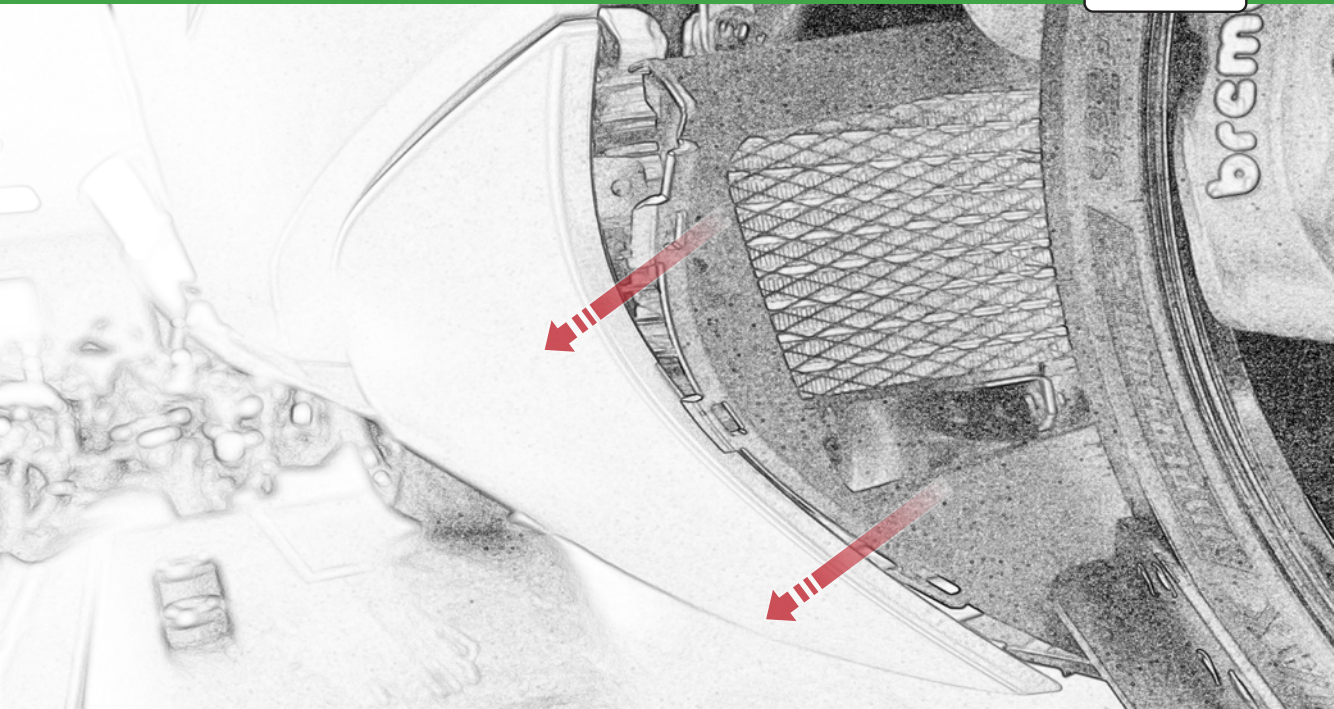


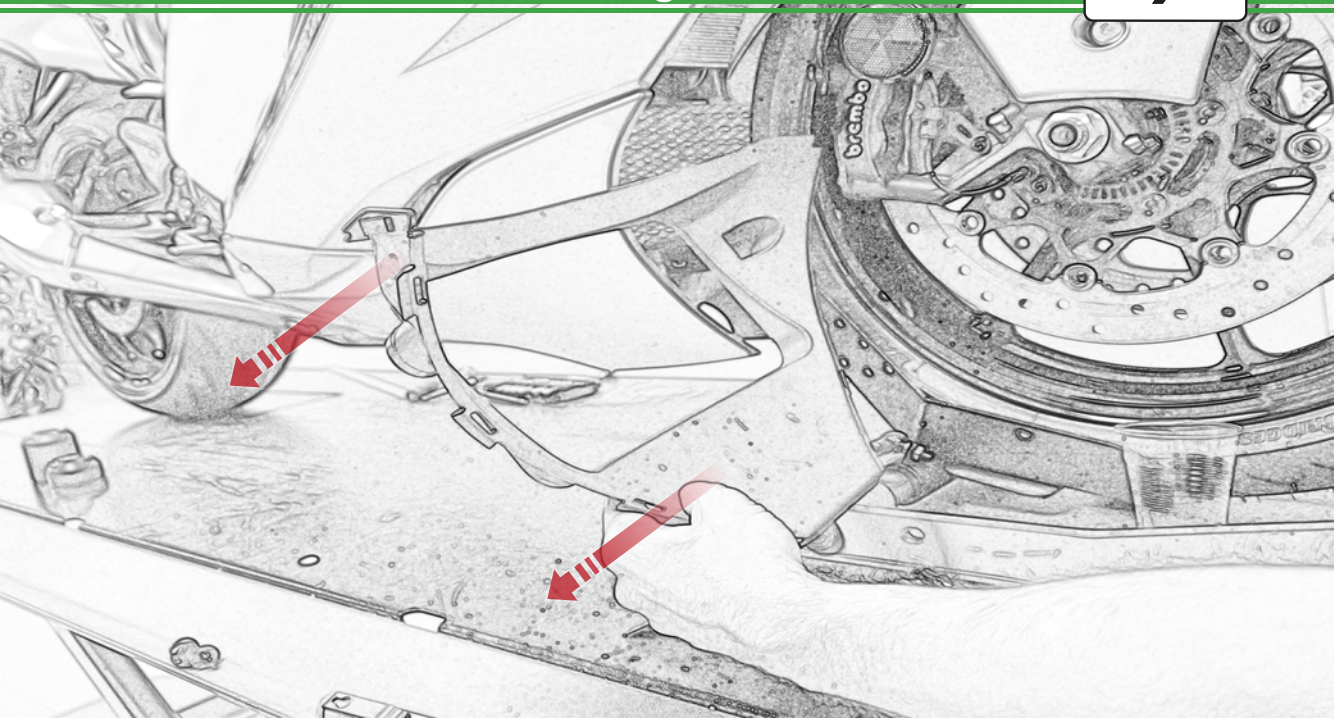


Repeat  
Both Sides

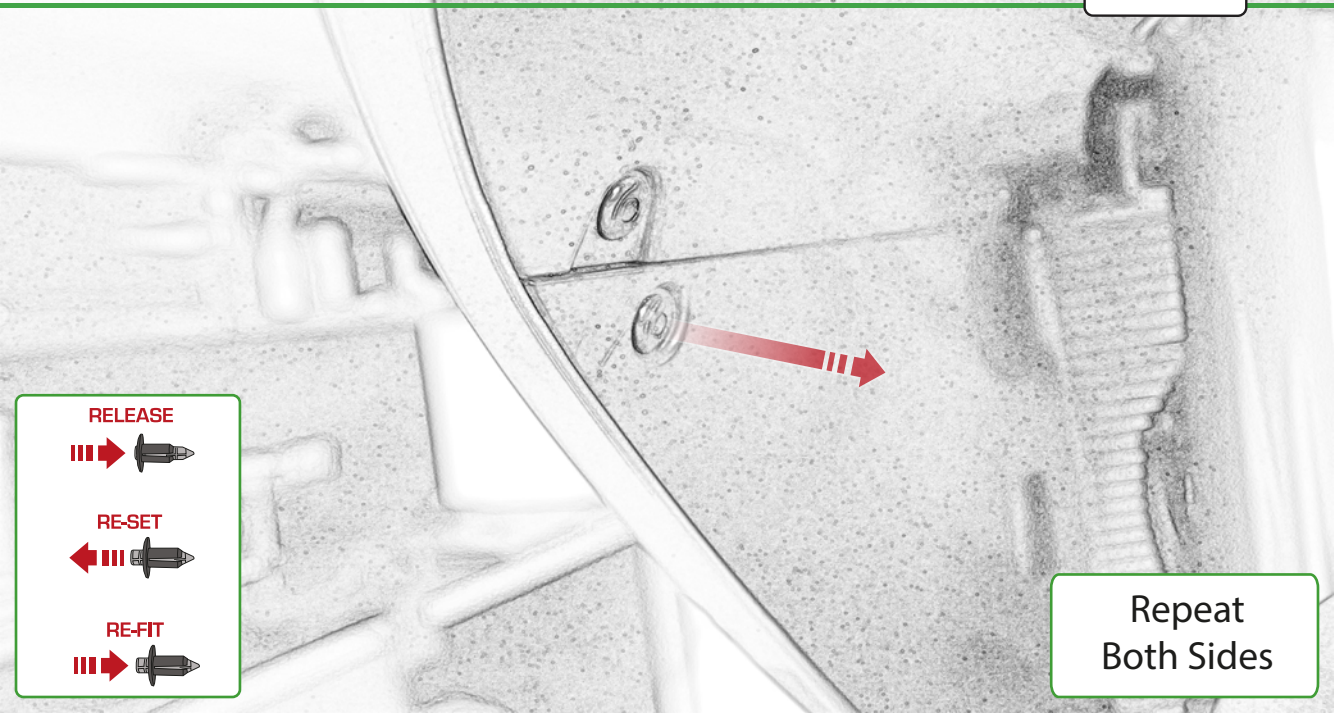


Repeat  
Both Sides









RELEASE



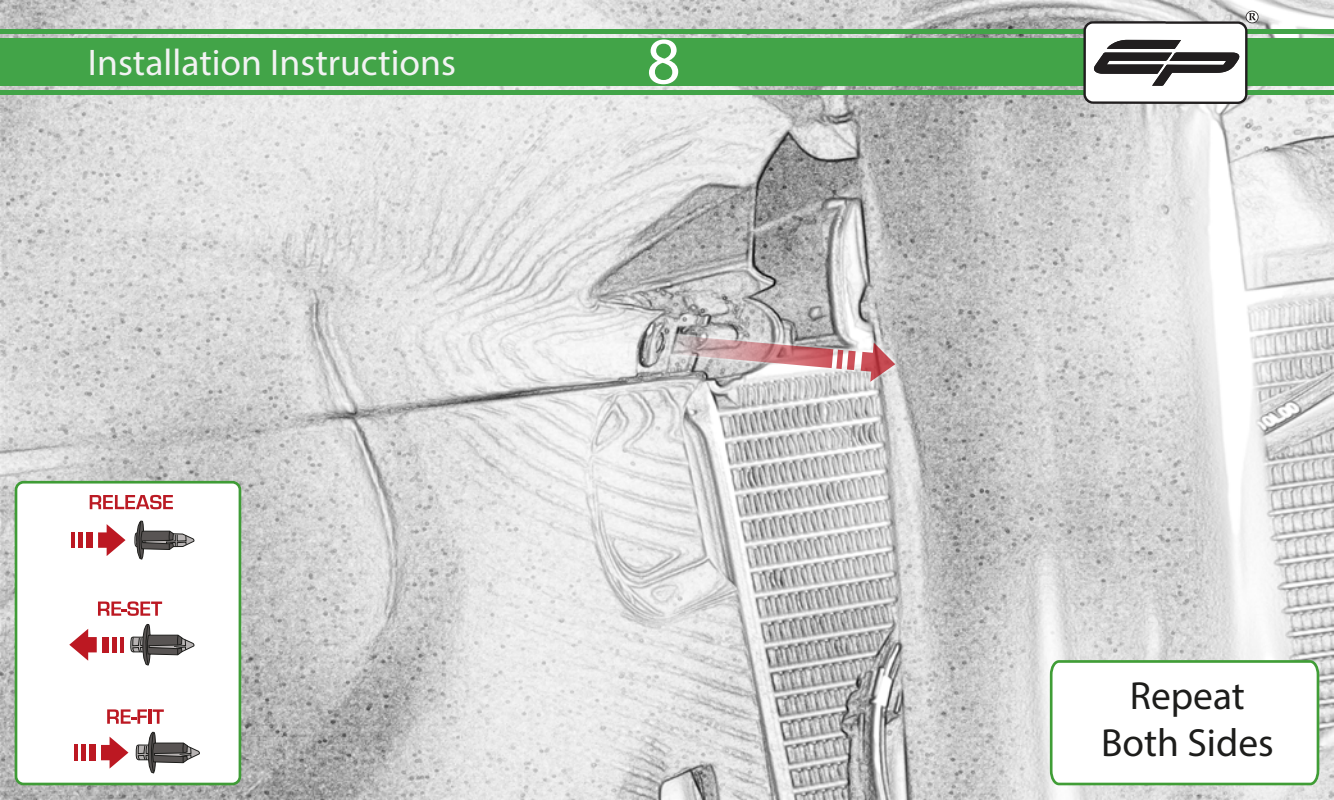
RE-SET



RE-FIT



Repeat  
Both Sides



**RELEASE**



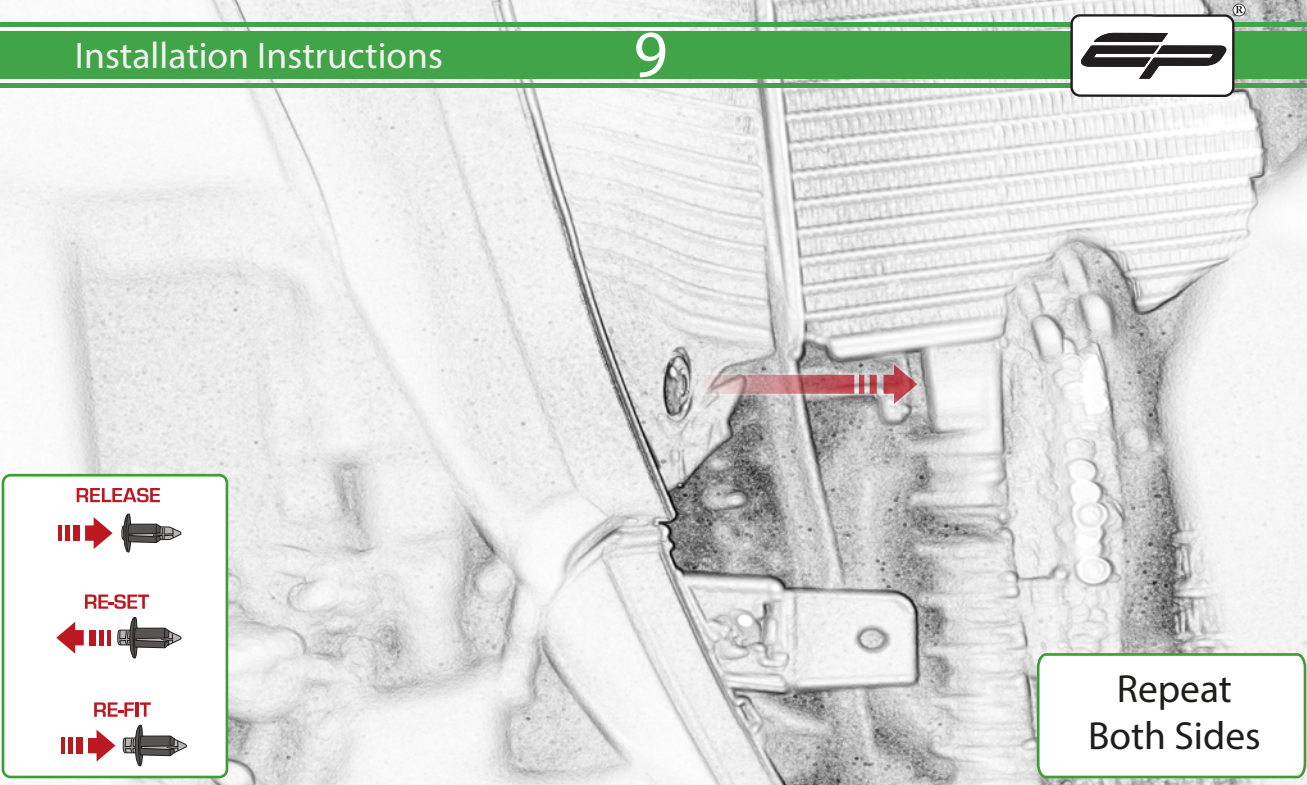
**RE-SET**



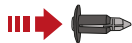
**RE-FIT**



Repeat  
Both Sides



RELEASE



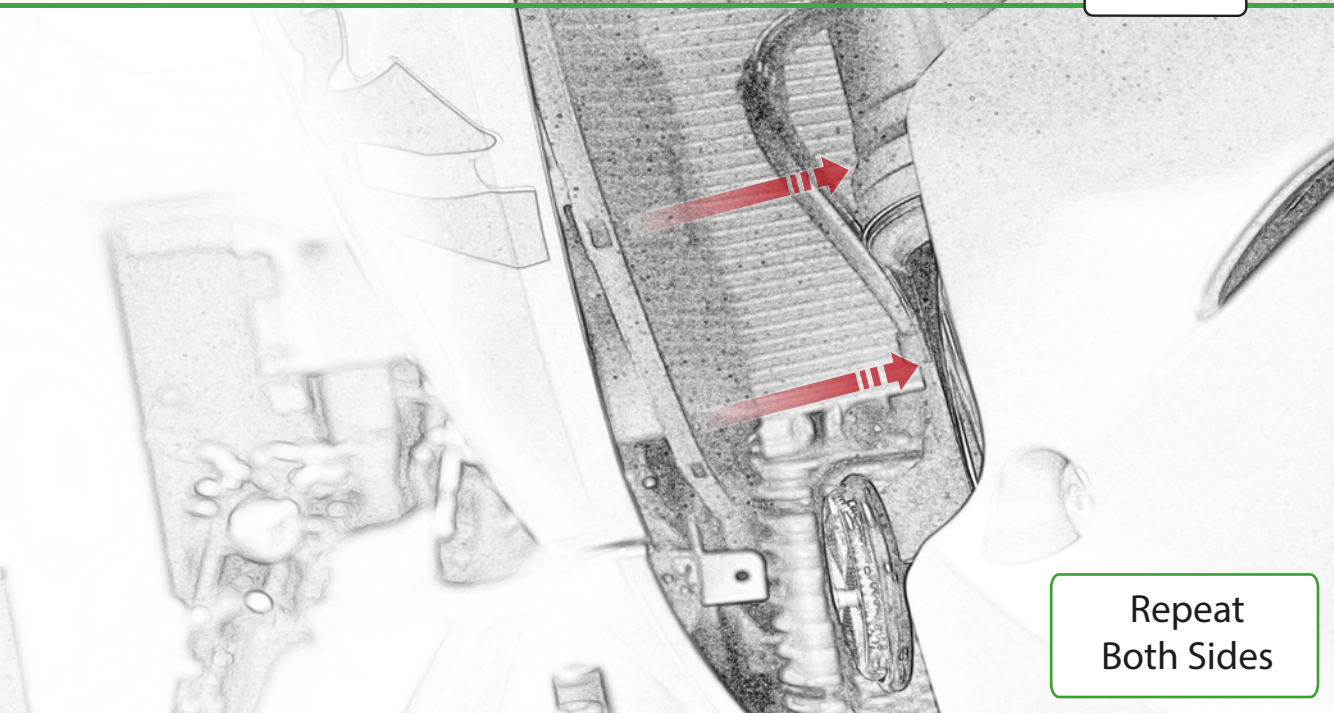
RE-SET



RE-FIT



Repeat  
Both Sides

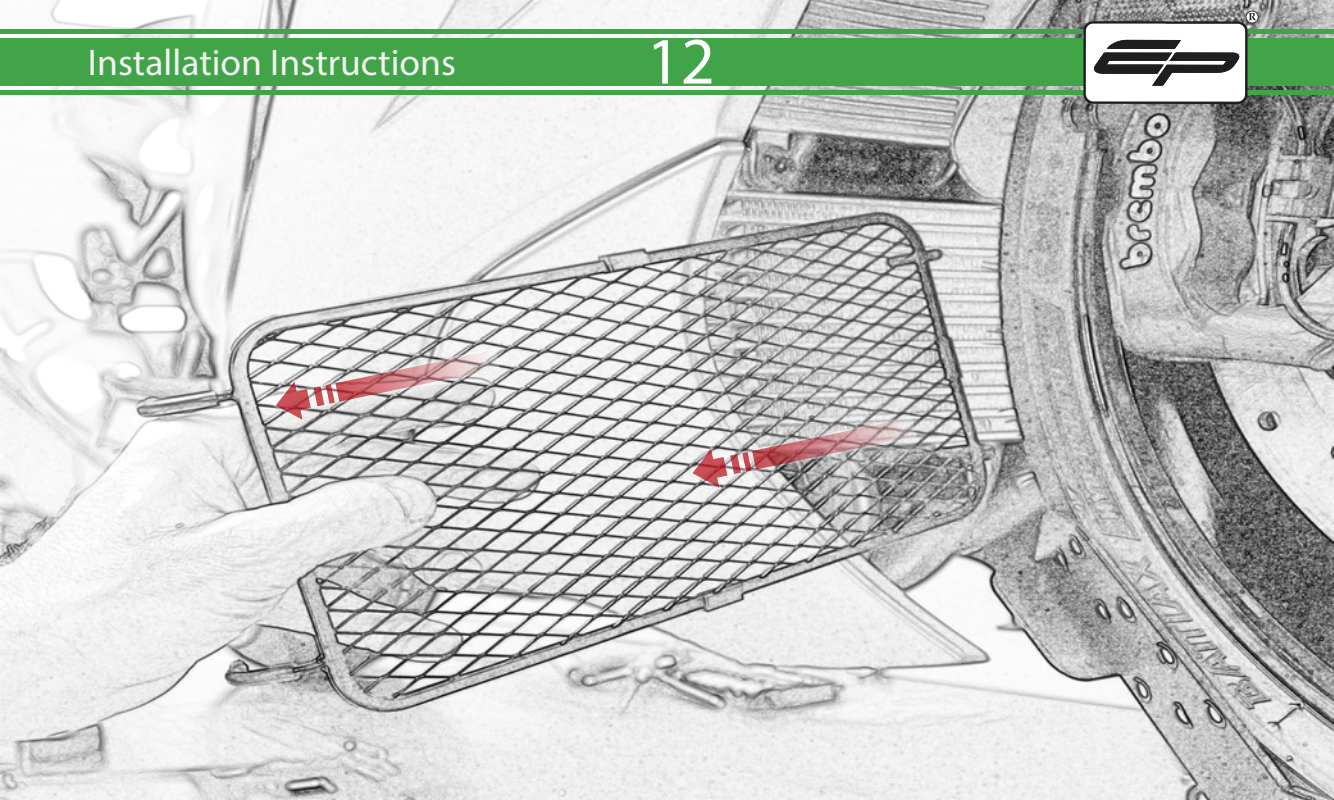


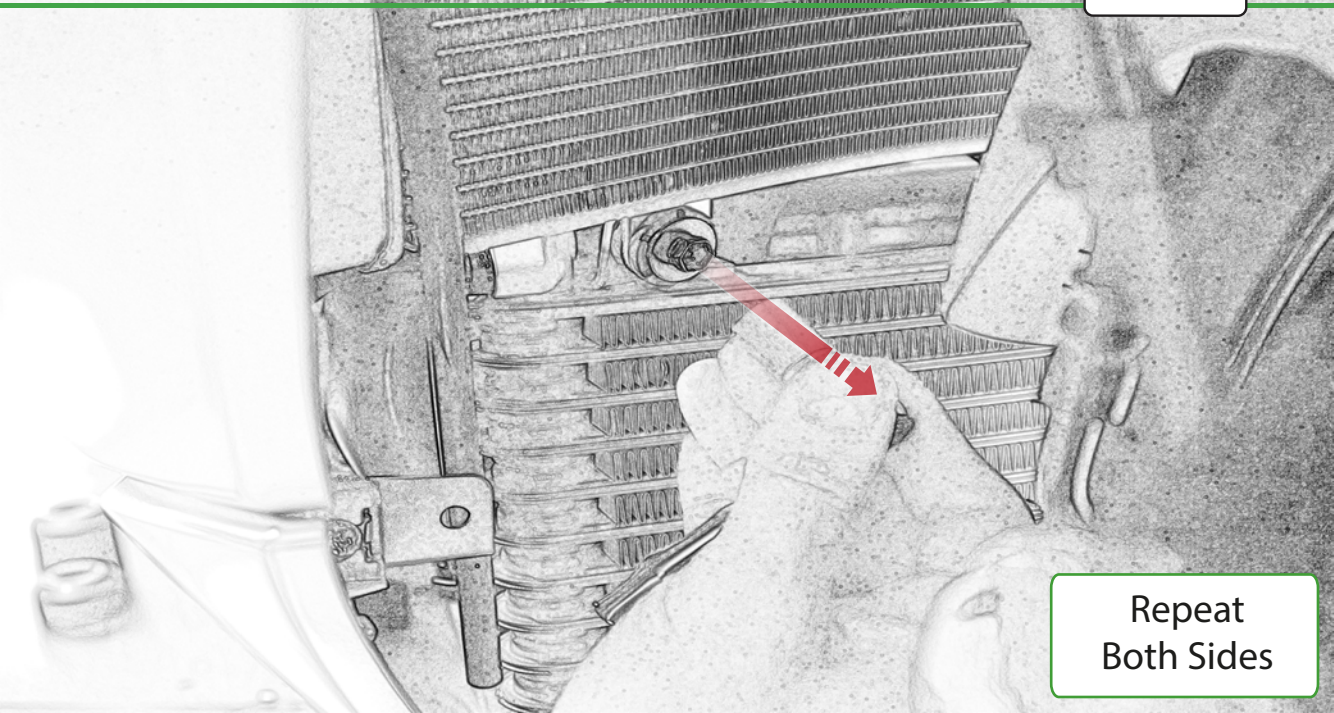
Repeat  
Both Sides





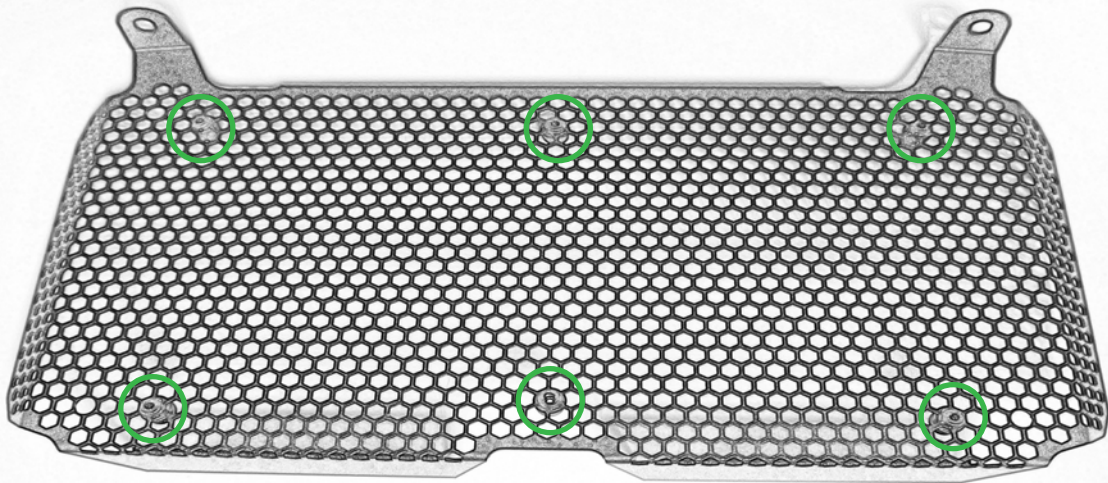
Repeat  
Both Sides

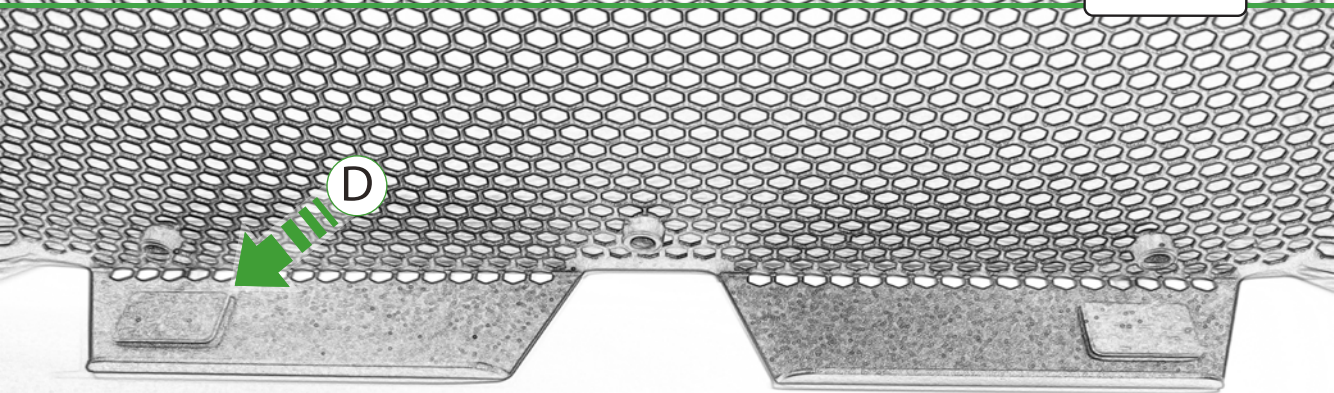


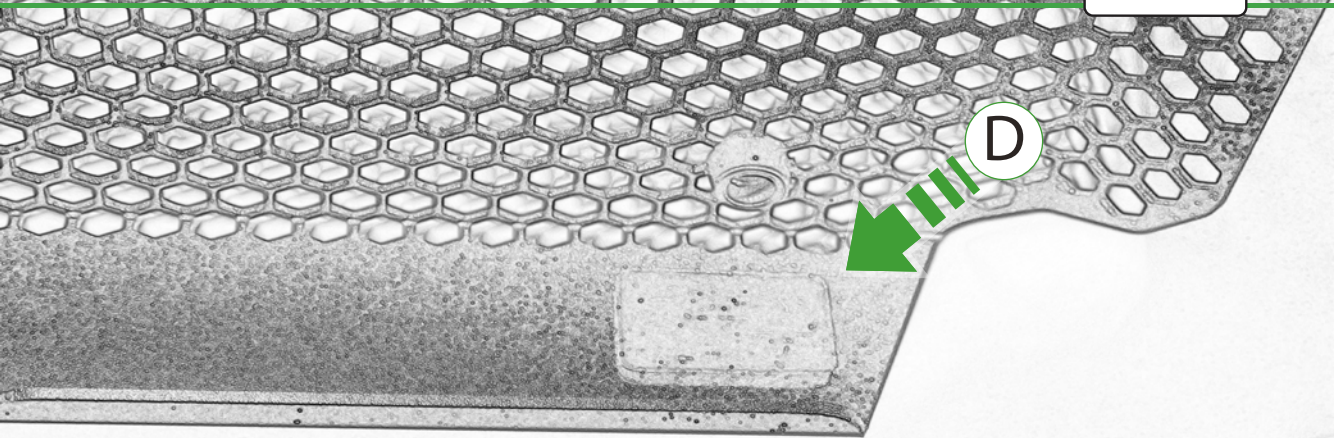


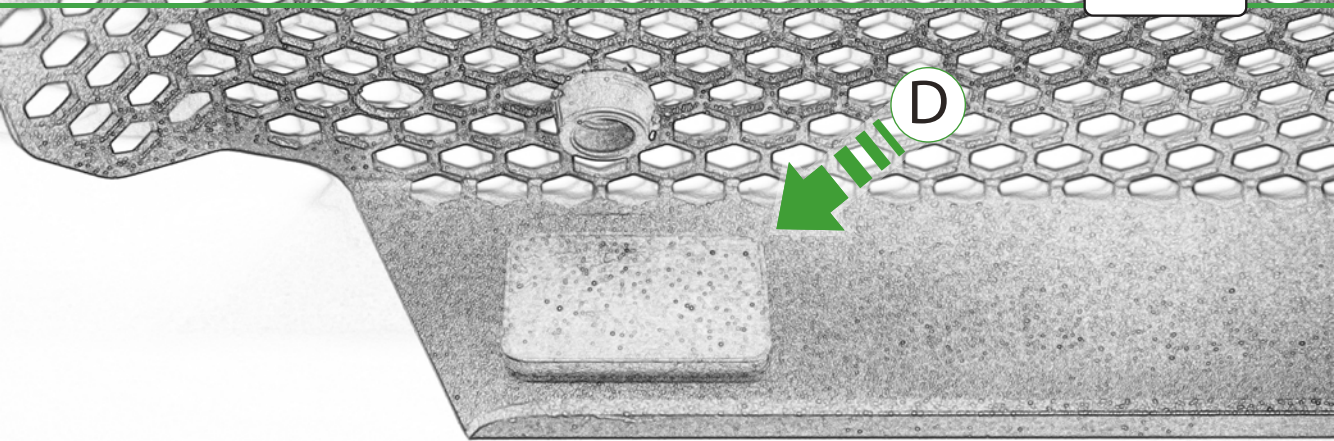
Repeat  
Both Sides



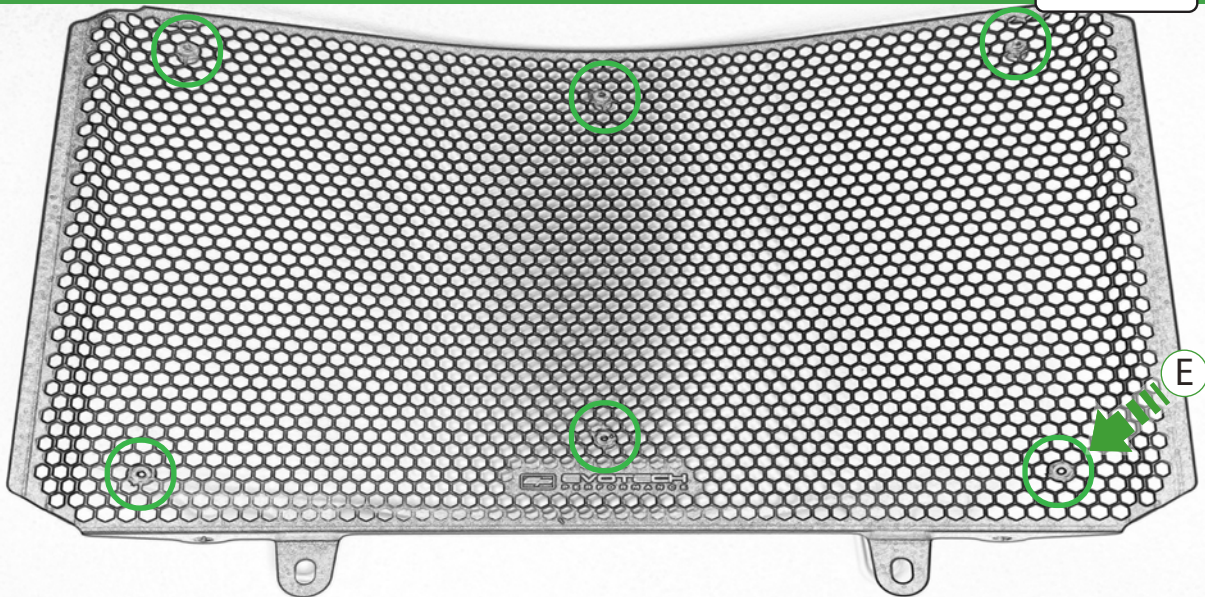




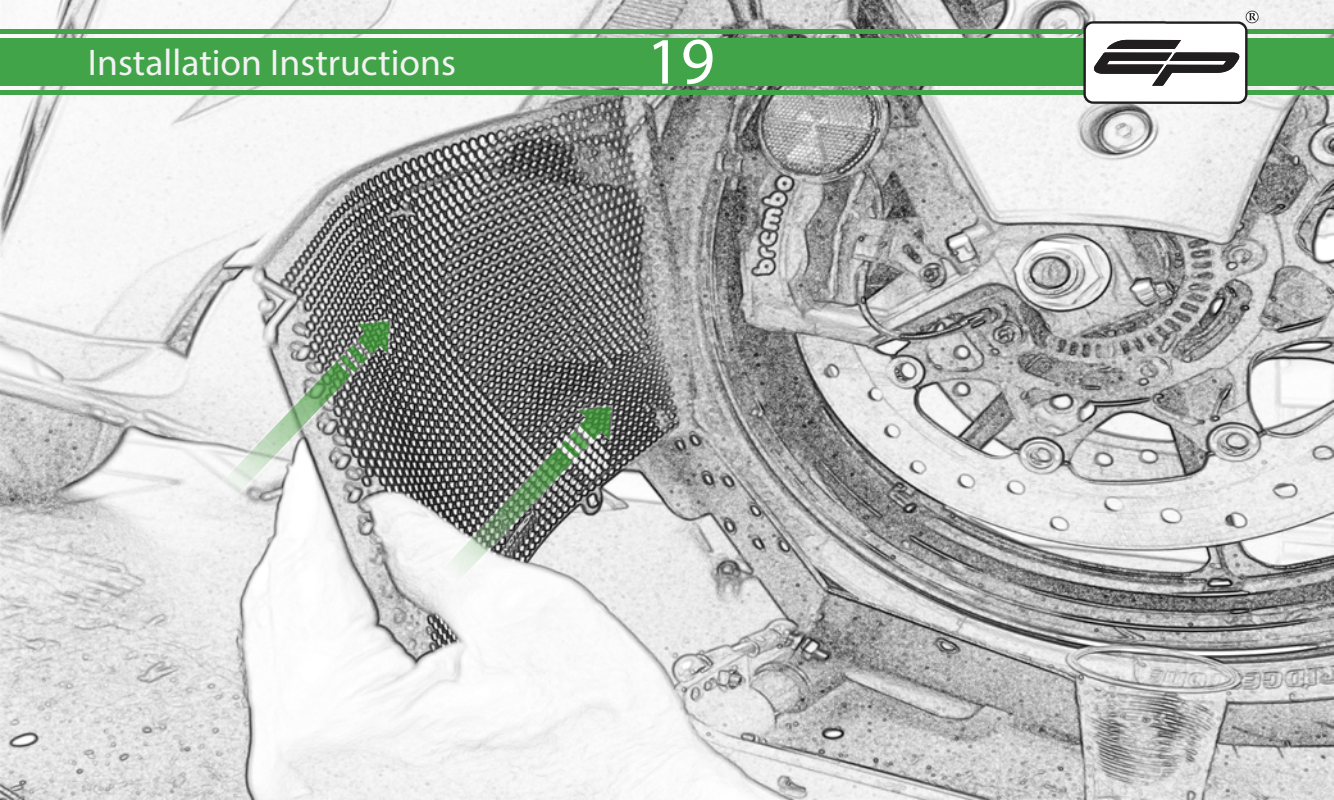


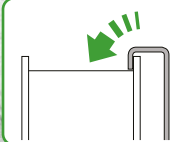
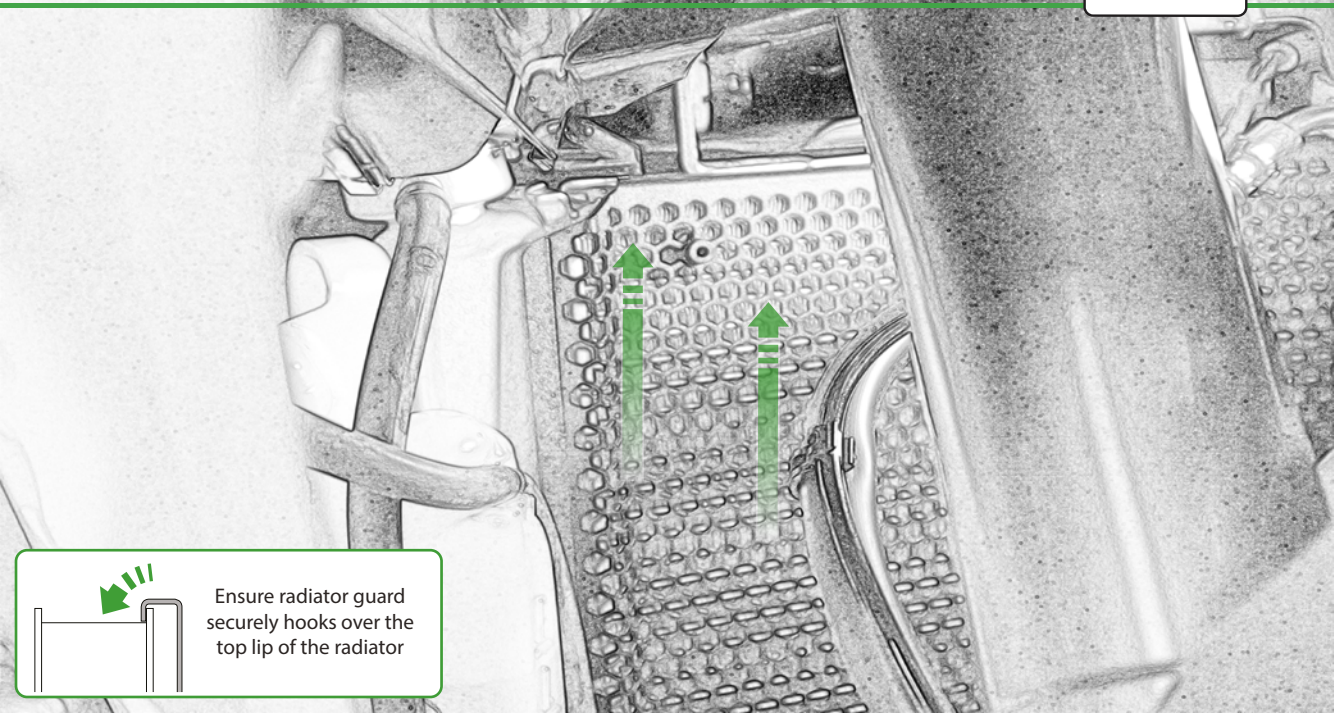






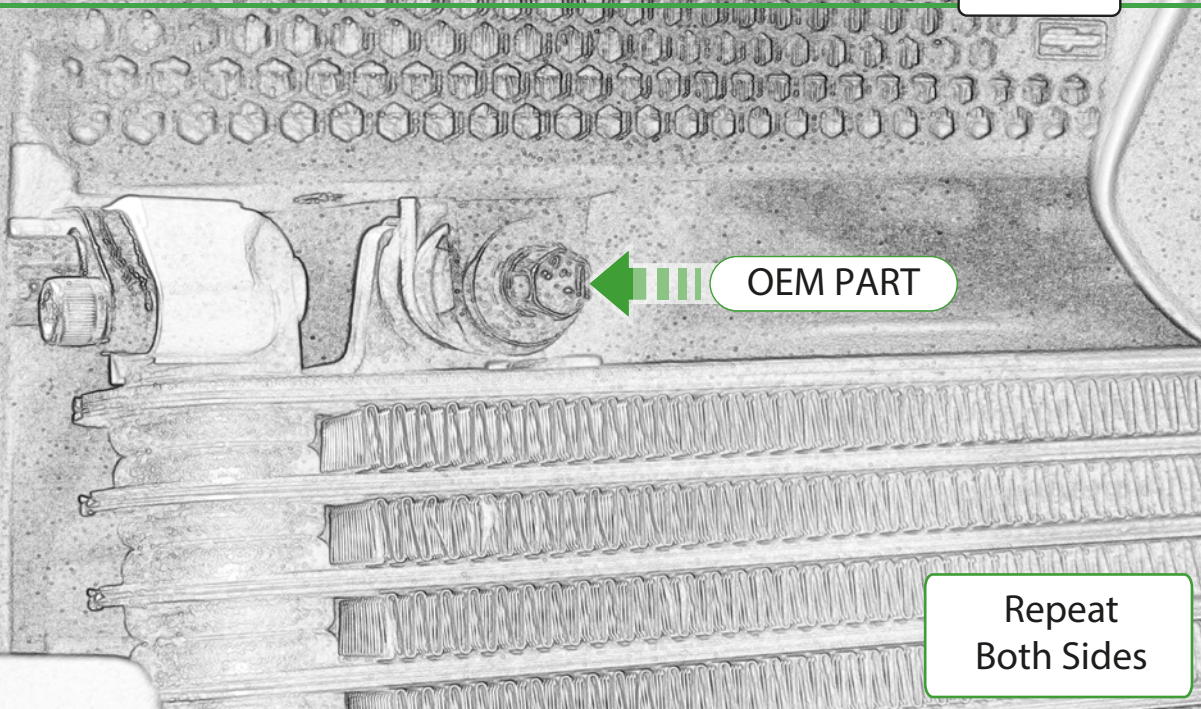






Ensure radiator guard  
securely hooks over the  
top lip of the radiator

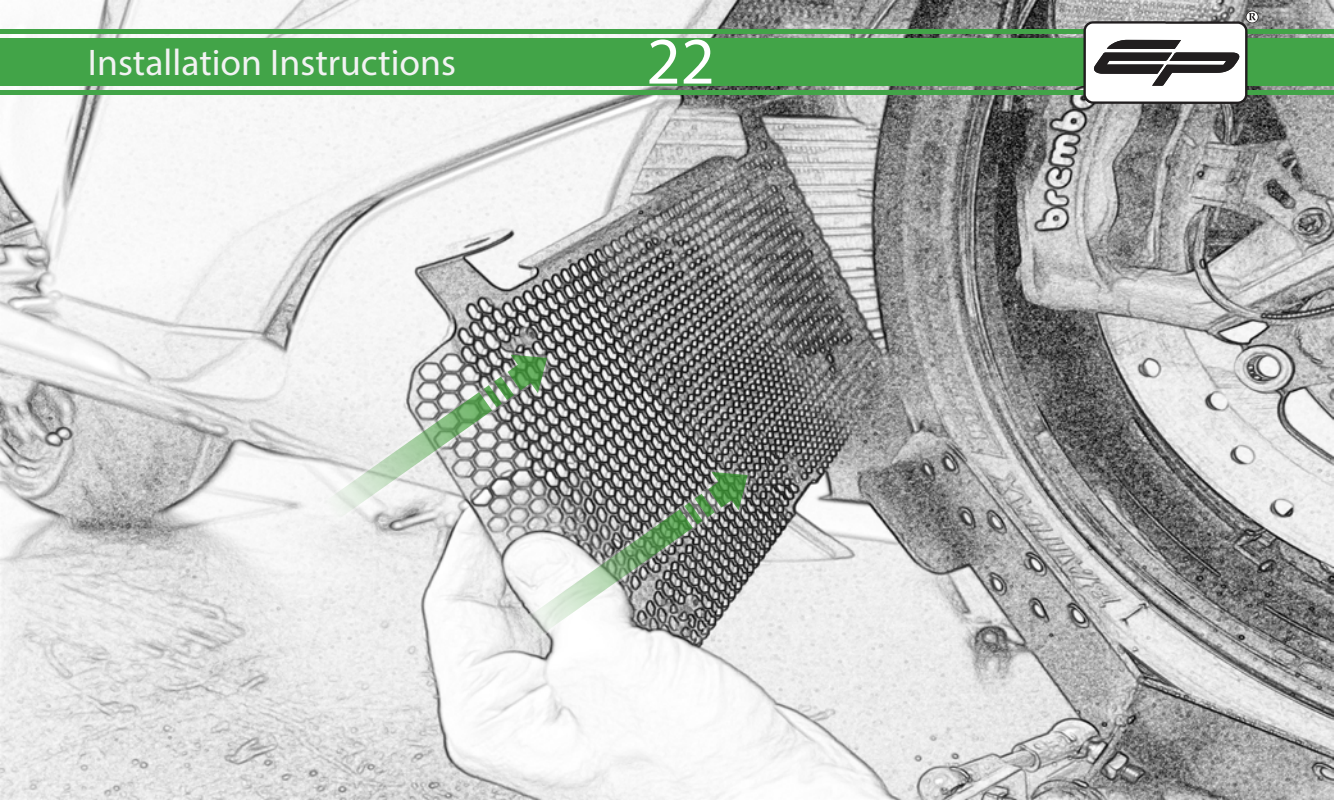
An inset diagram in the bottom left corner shows a close-up of the radiator guard's top edge. A green arrow points downwards and to the right, indicating that the guard's lip should hook over the top edge of the radiator's frame.

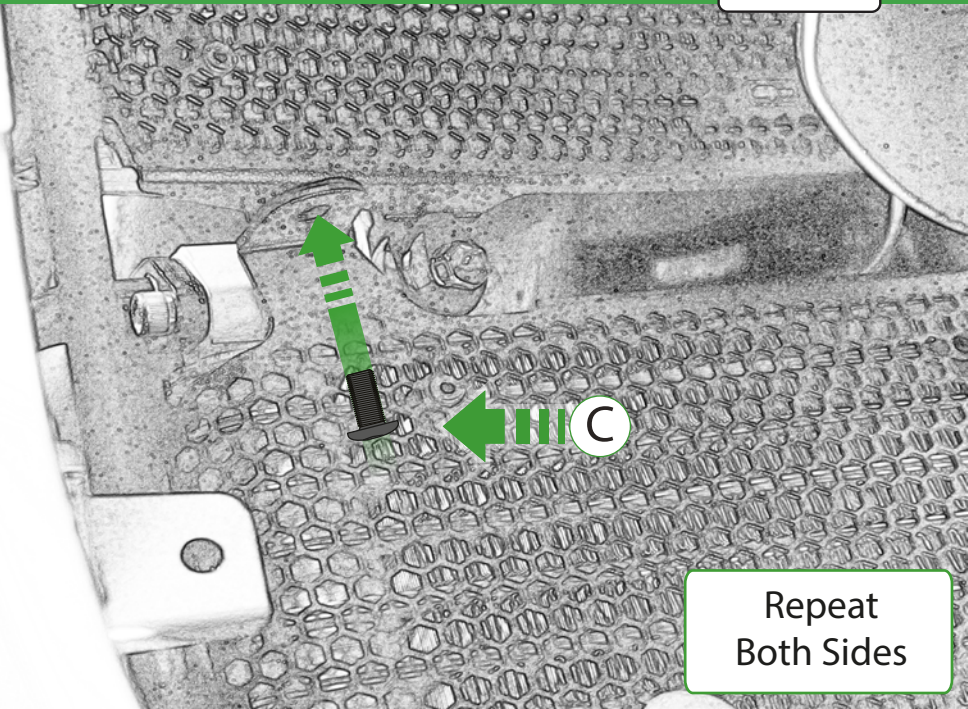


OEM PART

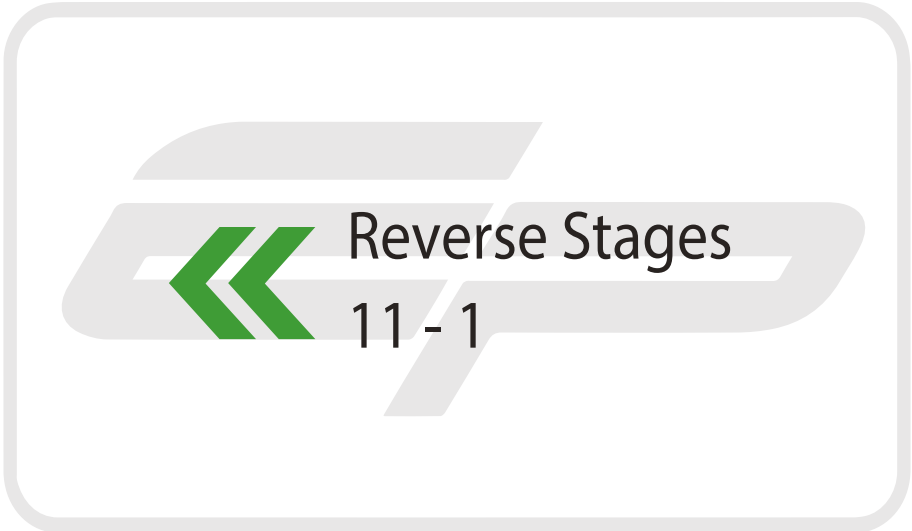
Repeat  
Both Sides







Repeat  
Both Sides





 **ESSENTIAL CHECKS** 

It is recommended that periodic inspections are made to ensure that dirt and debris have not become trapped between the guard and the radiator/oil cooler. Such dirt and debris would reduce the cooling efficiency of the radiator/oil cooler.

It is recommended that periodic inspections are made to ensure that all fixings are fully tightened.



**EVOTECH**®  
P E R F O R M A N C E

[www.evotech-performance.com](http://www.evotech-performance.com)