



EVOTECH[®]
P E R F O R M A N C E

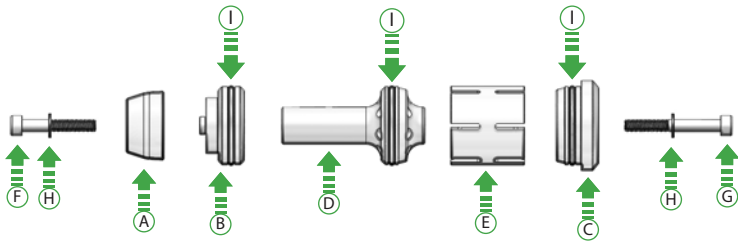
BMW R 1200 / 1250 GS
Rear Spindle Bobbin

Installation Instructions

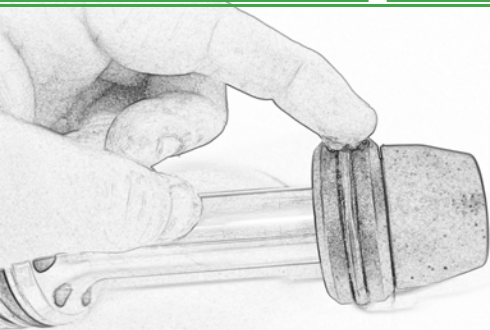


Kit Contents PRN014487

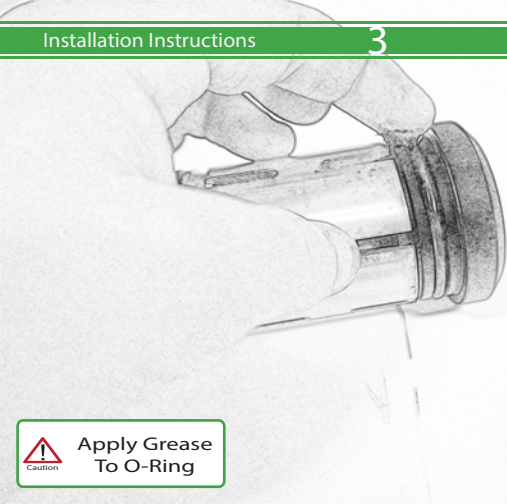
- (A) 1 x Spindle Bobbin Head
- (B) 1 x L/H Rear Spindle Spacer
- (C) 1 x R/H Rear Hub Stop
- (D) 1 x Rear Spindle centre Spacer
- (E) 1 x Rear Spindle Collet
- (F) 1 x M8 x 50 Caphead SS
- (G) 1 x M8 x 65 Caphead SS
- (H) 2 x M8 Washer
- (I) 3 x O-Ring 44mm



 **Assemble
Do Not Fully
Tighten**

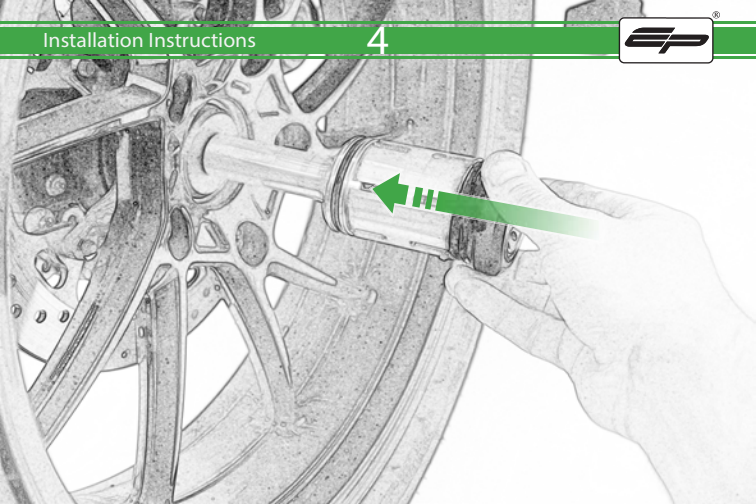


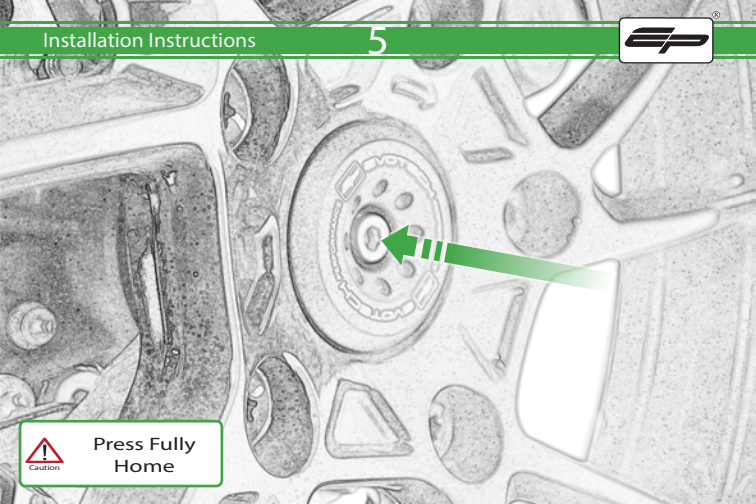
Apply Grease
To O-Ring



Caution

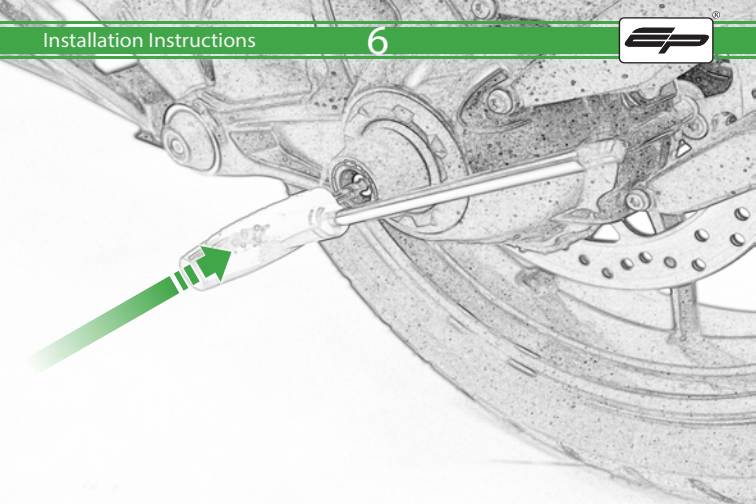
Apply Grease
To O-Ring

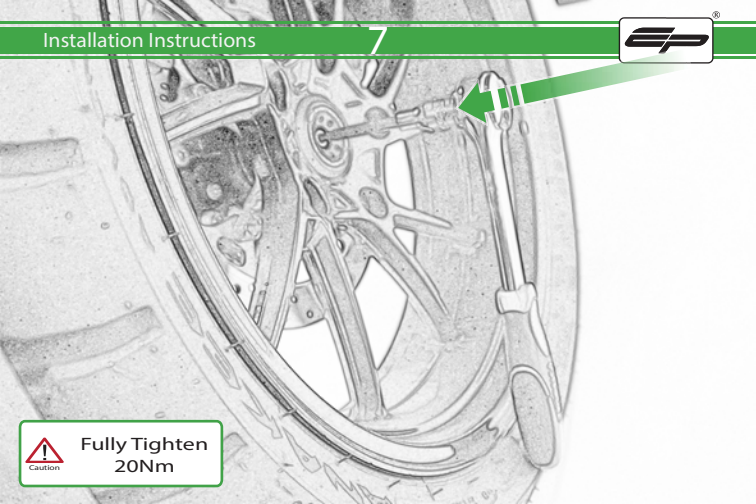




Caution

Press Fully
Home





Caution

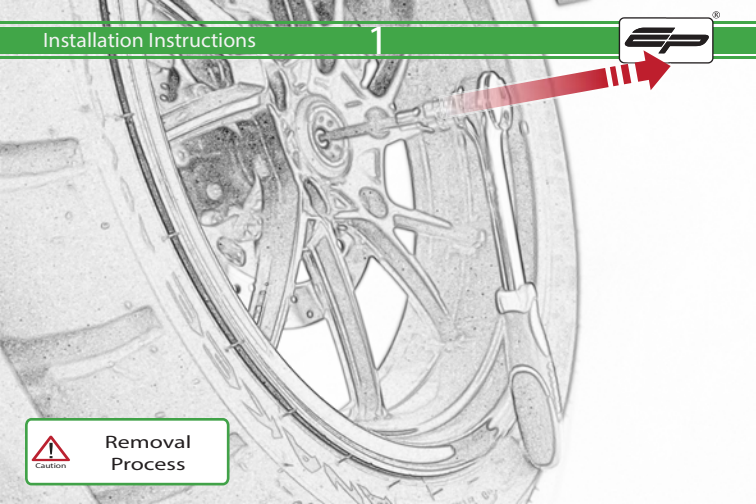
Fully Tighten
20Nm



 **ESSENTIAL CHECKS** 

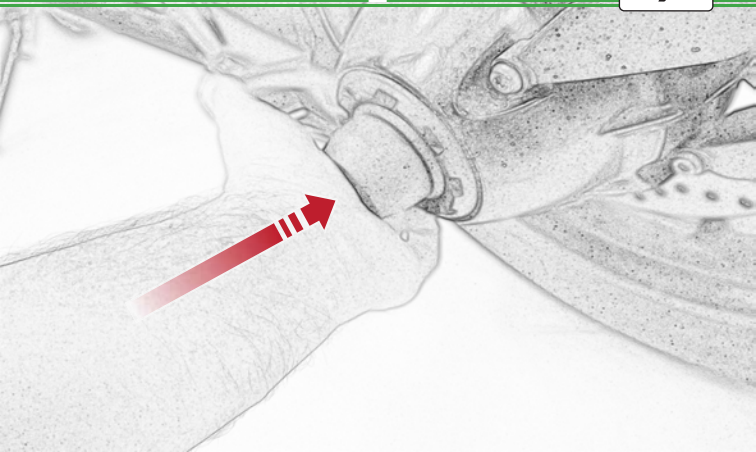
It is recommended that periodic inspections are made to ensure that all bolts are tightened to the specified torque settings.

Should the bike be involved in an accident a thorough inspection should be made and any components that have taken an impact, no matter how small, be replaced



Caution

Removal
Process





EVOTECH®
P E R F O R M A N C E

www.evotech-performance.com