



EVOTECH®
P E R F O R M A N C E

Installation Instructions



 **DISCLAIMER** 

Evotech Performance recommend that brake and clutch levers be fitted by a fully trained mechanic.

If you chose to fit the any aftermarket brake or clutch levers without sufficient training or advise from Evotech Performance then you do so at your own risk.

Evotech Performance accept no responsibility for any incorrect fitment.



EVOTECH PERFORMANCE BRAKE AND CLUTCH LEVERS

Instruction Contents

Section 1 - Cable Clutch

Section 2 - Hydraulic Brake and Clutch

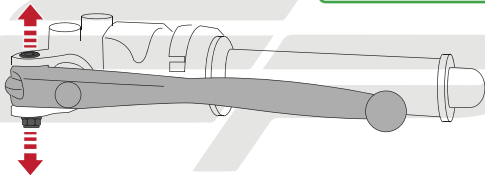
Section 3 - Ducati Hydraulic Brake and Clutch

Section 4 - Aprilia Tuono V4/RSV4 2015 Cable Clutch

Section 5 - Coloured adjuster replacement

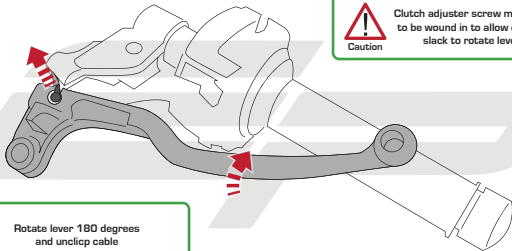


Section 1 - Cable Clutch



Caution

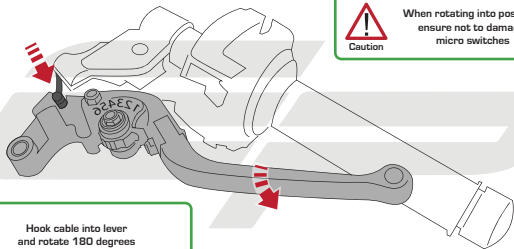
Completely remove security nut
from underneath first
then remove the bolt

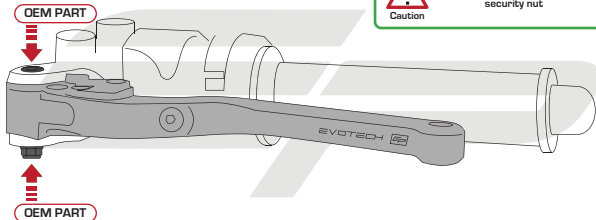


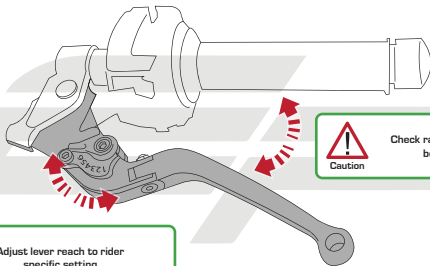
Caution

Clutch adjuster screw may need to be wound in to allow enough slack to rotate lever

Rotate lever 180 degrees
and unclip cable







Adjust lever reach to rider
specific setting



Caution

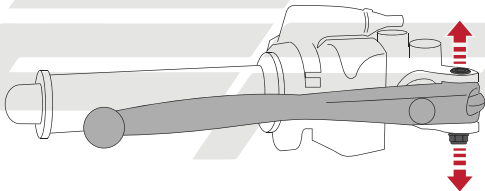
Check range of movement
before riding



Section 2 - Hydraulic Brake and Clutch



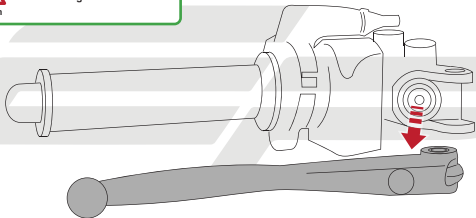
Completely remove security nut
from underneath first
then remove the bolt





Caution

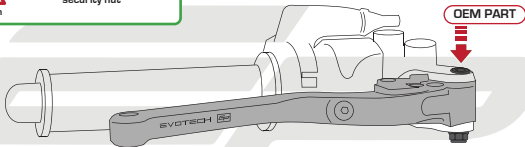
Remove lever ensuring not
to damage rubber seal





Caution

DO NOT over-tighten
security nut



OEM PART



Caution

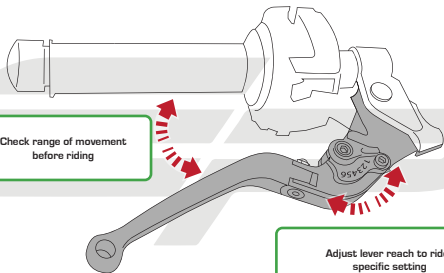
When placing into position
ensure not to damage
micro switches

OEM PART



Caution

Check range of movement
before riding



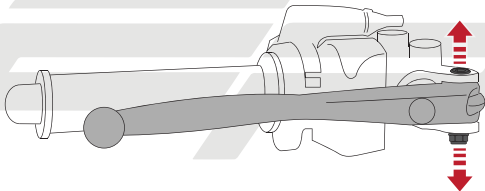
Adjust lever reach to rider
specific setting



Section 3 - Ducati Hydraulic
Brake and Clutch



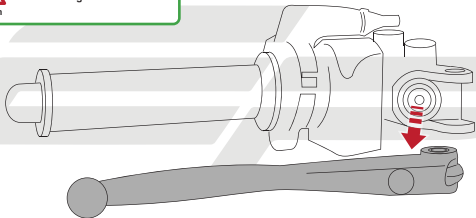
Completely remove security nut
from underneath first
then remove the bolt

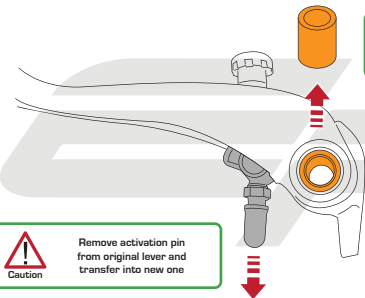




Caution

Remove lever ensuring not
to damage rubber seal





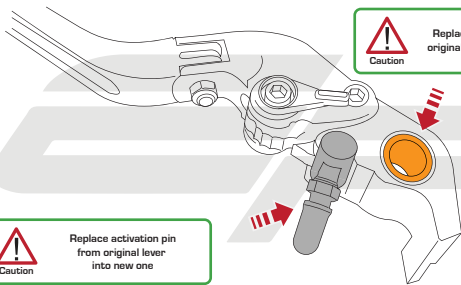
Remove brass bush from original lever and transfer into new lever

Caution



Remove activation pin from original lever and transfer into new one

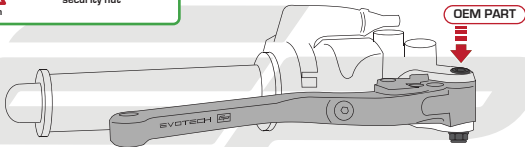
Caution





Caution

DO NOT over-tighten
security nut



OEM PART



Caution

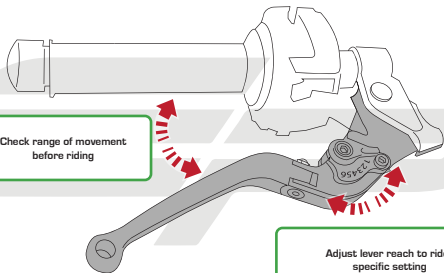
When placing into position
ensure not to damage
micro switches

OEM PART



Caution

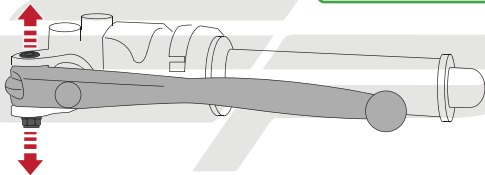
Check range of movement
before riding



Adjust lever reach to rider
specific setting

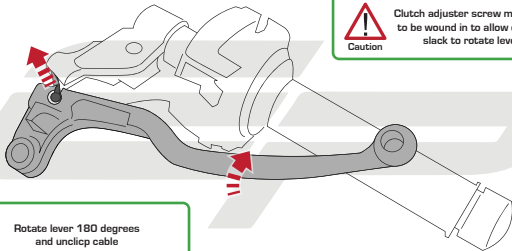


Section 4 - Aprilia Tuono V4 2015
and RSV4 2015 Clutch



Caution

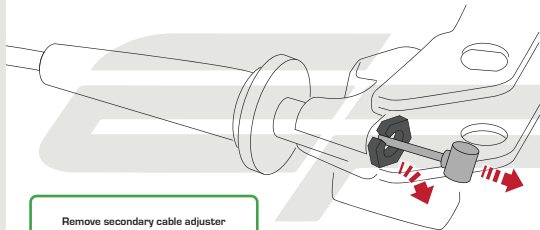
Completely remove security nut
from underneath first
then remove the bolt



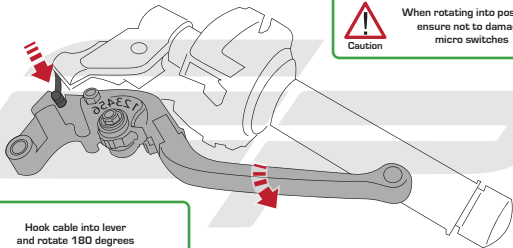
Caution

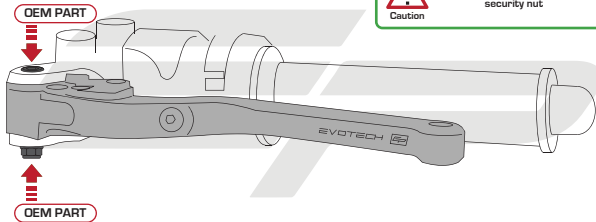
Clutch adjuster screw may need to be wound in to allow enough slack to rotate lever

Rotate lever 180 degrees
and unclip cable



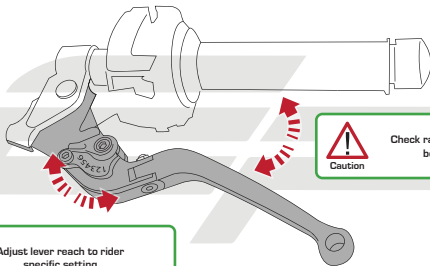
Remove secondary cable adjuster
from inside lever





Caution

DO NOT over-tighten
security nut



Adjust lever reach to rider
specific setting



Caution

Check range of movement
before riding

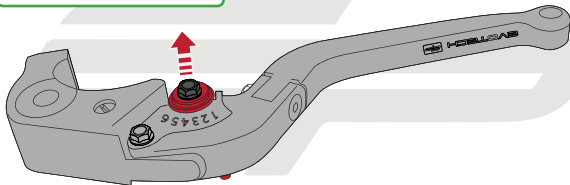
A large, light gray watermark of the stylized 'EP' logo is centered in the background of the slide.

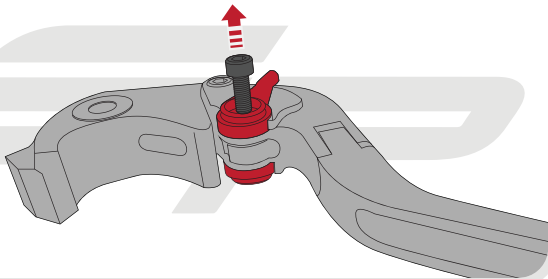
Section 5 - Coloured Adjuster Replacement

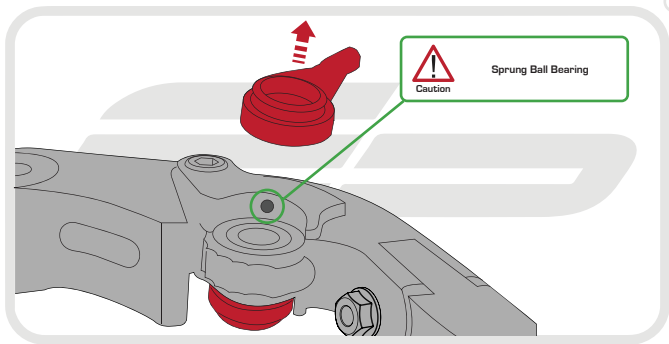


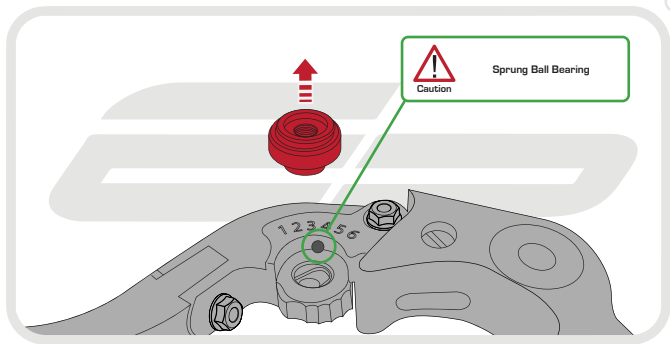
Caution

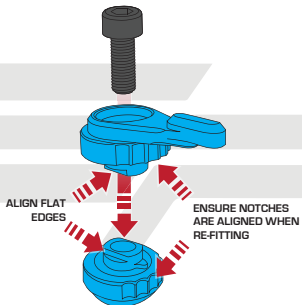
Completely remove security nut
from underneath

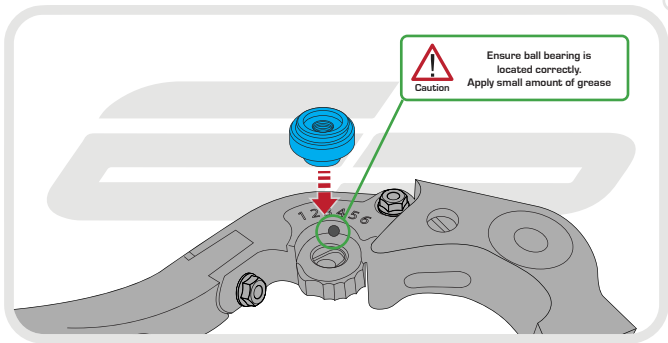


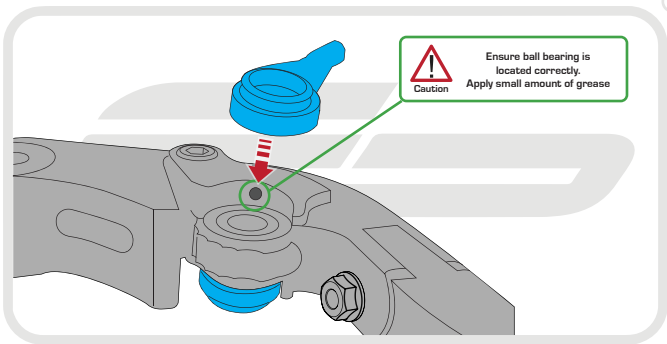


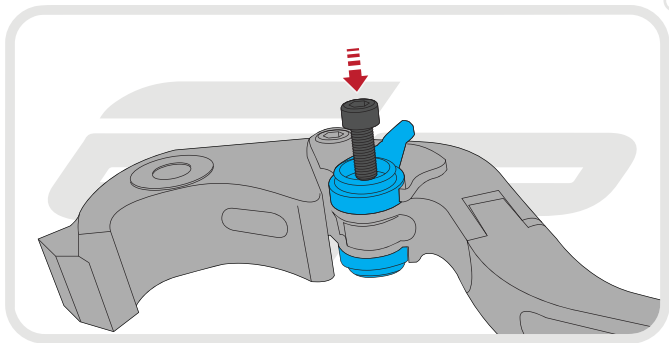








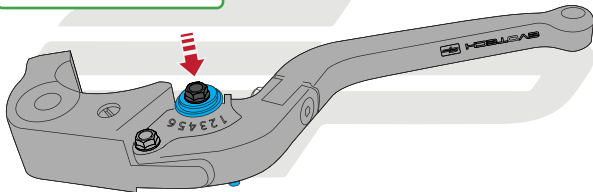






Caution

DO NOT over-tighten
security nut





EVOTECH®
P E R F O R M A N C E

www.evotech-performance.com